

BOX HOLDER



Key Peninsula NEWSLETTER

Non-profit Org.
U.S. POSTAGE
PAID
PERMIT NO. 2
VAUGHN, WA. 98394

CIRCULATION 3750

NEIGHBORHOOD NEWS FROM WAUNA TO LONGBRANCH-

June 1979

VOLUME V, ISSUE NO. 6

UPPER SOUND GRANGE HONORS LOCAL ACTIVE CITIZENS



April 20th, Upper Sound Grange presented the Grange Community Citizens Award to two outstanding citizens of the community; Sally Cornman and Robert Schottland.

This award is to recognize Non-Grange persons, who we, as Grangers feel have made outstanding contributions to the welfare happiness and betterment of the community.

Presentations were made by Past Master, Ray Durward, shown with the recipients.



SUMMER FETE

Pioneer Days will highlight your summer. On Aug. 11th and 12th at the Civic Center you will see--Air Force Jazz Band, Navy Band, displays, contests, Food Fair and many more events.

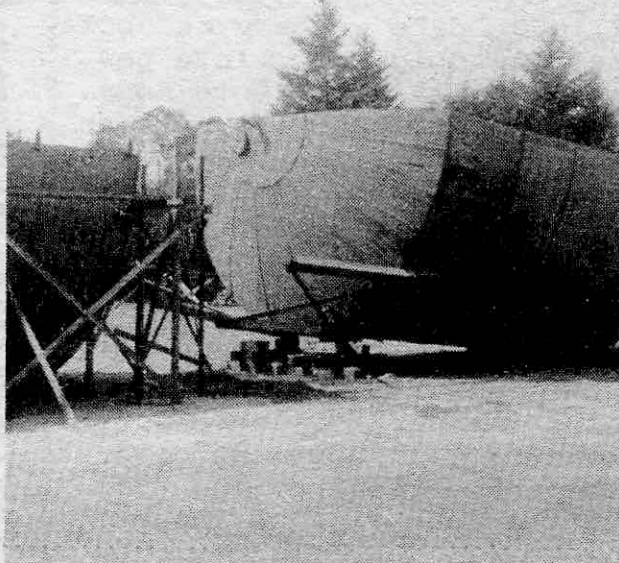
VAUGHN - EVERGREEN SCHOOLS SHOW EXPANSION THIS YEAR

This school year has brought many changes to our local schools. The School Board has authorized solutions to many existing problems of long-standing, as well new ones brought on by the fast swelling school enrollment. The administration has acted on the Board's recommendations and implemented the changes: a new principal at Evergreen, two new playfields at Evergreen that are now useable, a new gym soon under construction at that same school so the existing gym can be made into classrooms, a resurfaced field at Vaughn, a new gym, and a ten room addition to open next fall, at Vaughn.

The storage tank pictured here is sitting in the school yard, awaiting assembling to create the necessary water reserve to meet fire codes for the new addition.

We want to thank the school Board and Administration for recognizing our local needs and acting on them.

NEW WATER TANK BRINGS SECURITY TO VAUGHN SCHOOL



NOTRE DAME SCHOLARSHIP

Mick Tovey, son of Mr. & Mrs. Mike Tovey of Lakebay, has received a four year Navy ROTC scholarship to Notre Dame. The family received a call from Pensacola, Florida, informing them of the award.

Mick has been editor of the Peninsula Year Book in his senior year, and a member of the Honor Society and German club.

His interests for the future are in physics or political science. He is fourth in his class of 365 students - a credit to our community and we appreciate his diligent scholarship in his four years at Peninsula High School. We congratulate Mick and his family.

SKATING CANCELLED

Skating will be cancelled for the next two weeks on Fridays and Sundays--June 1 & 3, and June 8 & 10. Skating will re-open on June 15.

Our Pres Sez:

by Bob Schottland

Most people know the "blindness" which are worn by race horses to keep them from seeing what is on either side of them and to focus their attention straight ahead toward the finish line.

People who are concerned or devote their entire time and effort worrying, complaining or concentrating on one kind of problem or themselves may also develop a common ailment called "tunnel vision." This problem prevents people from seeing special needs and results in a "narrow," one-sided, inflexible view.

With simple problems like driving an automobile, shopping for groceries, paying bills, etc., we are all aware of the changes which have and are taking place in our national, State and local economies. With inflation eating away at salaries and the constant thought of recession on the other, it becomes a worrisome problem and frustration tends to set in very quickly.

To help everyone focus their attention on the appropriate solutions to their problems, it is important for each person to fight against "tunnel vision" from the very start. Each person should use every possible contact to broaden his or her point of view and to try to understand the problems of others.

Our Civic Center has been in financial trouble for many years, but with the help of dedicated volunteer executive officers, Board members and interested citizens, we have been able to keep our sights focused on straightening out these difficulties.

If people could learn to make a list of the problems which face them and then proceed to take only one of these at a time and work out a solution, they would find that "the chips would fly" and in no time at all the list would diminish and so would the frustration, tension and worry.

To date we have redecorated the Gold Room, laid new vinyl tile in the Gold Room, kitchen and hallways, put on a new roof, rewired the main systems in the Center and installed a new 400 amp service panel, drilled a new water well, installed new energy saving devices on the boiler system, refinished the gym and stage floors, painted the office under the library, built a well house to cover the well, repaired the ramp on the East side of the exit,

repaired the sump so that it would drain the water from under the building, purchased a new grill and refrigerator, put a new hoist on the basketball backboard and added a new backboard, purchased a new scoreboard, purchased a new electric typewriter for the Newsletter, purchased a copy machine to offset the cost of printing and duplicating for the Center and the Park Board and for public use also, put on new gutters over the entire building and purchased new chairs and tables.

In progress now is the building of two restrooms and a storage room (with the aid of funds from the Older American Act), we plan to paint the entire outside of the Center and the library, insulate the walls and attics, repair the heaters in the gym.

A great many people have helped to make these projects come about, while a great many others have complained. The tendency of most people is to stand back and become "the sidewalk superintendent." The person who has all the answers to every problem, has not yet been born. Nor do we ever see these people at any of our Work Parties.

Everyone who lives on the Peninsula has a challenge before them to see that improvements continue at the Center. We should all try to remember that WISDOM is knowing what to do next. SKILL is knowing how to do it and RESPONSIBILITY is doing it.

We need a surge of new people to come to the aid of the Center. We need the support of the older and loyal members of the community. We need informed, intelligent and active participants if the Center is to remain one of the key cultural, literary, recreational and educational centers in our community. When will we hear from you?

Sunday Skating

2 to 5 p.m.

ADULTS - 6 FOR \$10.00

FAMILY RATE FOR 4: \$5.00


ALL OTHERS ARE AT USUAL RATES:

THRU 6TH GRADE - \$1.25

7TH THRU 12 - 1.75

18 AND OVER - 2.00

COME! ENJOY! HAVE FUN SUNDAYS!



R. O. Box 12, Vaughn, WA. 98394
PUBLISHER
 Key Peninsula Civic Center
 884-3456
EDITOR
 Pat Greetham
ADVERTISING
 Henry Stock
LAYOUT ARTISTS
 Marlyce Viers
 Margaret Olsen

PARENTS, STUDENTS, FRIENDS

You are invited to attend all of the "Saturday Flicks" at the Civic Center scheduled through the end of July.

Shows start at 1:00 p.m. and will end at approximately 3:30 p.m.

Everyone will have an opportunity to win a door prize when tickets are drawn at the intermission.

Get your friends, neighbors, relatives and visitors together this summer and enjoy the remaining films.

Admission is \$1.25 for children and \$1.50 for adults. No children under 5 years of age will be admitted without an adult. We want you to attend the movies at the center in order to SAVE GAS and to avoid waiting in long lines in town.

FILMS WILL BE SCHEDULED AS FOLLOWS:

June 9	Heroes Road Runner Cartoon 2 hrs
June 23	Pete's Dragon Road Runner Cartoon 2½ hrs.
July 14	Smokey and the Bandit 3 Cartoons 2 hrs.
July 28	The Apple Dumpling Gang Cartoon Festival 2 hrs. 10 minutes.

SAKURA NURSERY

Key Center, Wa.

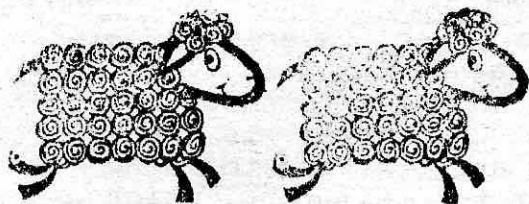
*Japanese Pear Apple

*Bark

*Ornamental Trees

SUNDAYS 11AM - 3PM

TUE-SAT 10AM - 5PM



SHEEP-TO-SHAWL FAIR

Fibers, Etc., a specialty shop for weavers and other fiber artists, is sponsoring a "Sheep-to-shawl" fair on Saturday, June 2nd. It will start with sheep shearing, at 1:00 p.m., by Russ Kline of Puyallup.

Phyllis and John Parker of the Arletta area, are providing the sheep.

Then on to the carding, spinning, weaving and dying, which will be continuous demonstrations throughout the whole day.

The shop is open from 10 to 5. It is located on 26th Avenue W. (2 blocks east of Bridgeport Way).

In the shop, you will see about 10 different kinds of fleeces, such as yak, goat, dog & llama. There are fibers for spinning and weaving, like silk, cotton, rayon, sisal, rafia, jute, sea grass, etc. They have a variety of basketry and batik supplies, as well as those for spinning and weaving.

Many items of custom designed clothing, in natural fibers, are on display. There are such accessories as handbags, scarves and handcrafted gift items. The public is invited to this unique display.

LIBRARY NEWS

This spring has been a time of change in the present and future shape of local library service.

Evergreen library at Evergreen School was closed in February. The Peninsula School District had informed the Pierce County Library System that the portable building housing the branch would be removed, and a gymnasium constructed there.

To help compensate for the loss, four service hours were added at the library system's Key Peninsula branch at Key Center.

Also at Key Center a federal grant has been requested to build a new library-health clinic complex. The \$500,600 funding request is a Community Development Block Grant Application through the Federal Department of Housing and Urban Development.

The tandem facility would occupy a 30,000 square foot parcel of land on the Gig Harbor-Longbranch Highway in Key Center. This property was purchased by Pierce County Library in April for the purpose of locating a new branch there sometime in the future.

County Library Director Carolyn Else, serving on the Pierce County Community Development Planning Council, says that as of the council's May 23 meeting, things looked favorable for the grant proposal. She is hopeful of federal approval around June 23, with money released for project activities in July.

Planning and construction of the new facility would take about three years according to the grant proposal timetable.

Margaret Keasler of Vaughn attended the Governors Conference on Libraries April 23-25 in Olympia. The purpose of it was to analyze how well present day library facilities meet the needs of the public and how to improve library services.

Governor Ray opened the Conference with a talk on "Info to Go!" saying sources of information should be readily available to all people; that it is of little use locked away in a computer bank or in a closed book.

Other speakers were Sam Keen, consulting editor of Psychology Today talking on "The Politics of Knowledge and Libraries as Sanctuaries" and Dr. Edward Lindaman, President of Whitworth College on "Thinking in the Future Tense."

Margaret, President of the Key Peninsula Friends of the Library, said it was an exciting, meaningful, learning experience and she was really glad to have an opportunity to represent all of Pierce County.

Our branch of the library now possesses a 1979 copyright set of Americana Encyclopedias 30 volume issue.

Also new in the library are several magazines; Life, Plants Alive, and Cricket, a children's periodical.



Key Peninsula Lutheran Church
REV. ED WAGNER
CIVIC CENTER - VAUGHN
SUNDAY SCHOOL: 9:30 A.M.
WORSHIP SERVICE: 10:30 A.M.

Bay Lake Fishing Camp
Claude and Maurita Lee
Rt. 1 Box 319-A
Lakeway, WA. 98249
884-3823

Belfair Cafe and Glo Room
BELFAIR, WASHINGTON
275-6226
OPEN 7 DAYS A WEEK
NEW HOURS
CAFE:
SUN. - THURS., 6A.M. - 10P.M.
FRI. - SAT., 6A.M. - 12P.M.
GLO ROOM:
11 A.M. - 2 A.M. - DAILY
SPECIAL MUSIC EACH WEEKEND
CATERING, BENEFITS, & SENIOR CITIZEN DISCOUNT

CIVIC CENTER FILMS

June 9	Heroes RoadRunner	Universal	P.G.	121 min.
June 23	Pete's Dragon RoadRunner	Disney	G	143 min.
July 14	Snokey and the Bandit 3 Cartoons	Universal	P.G.	123 min.
July 28	The Apple Dumpling Gang Cartoon Festival	Disney	G	127 min.

NUTRITION IMPORTANT

On Tuesday, June 26th, there will be an interesting session on basic nutrition in economic meals at 1:00 pm at the Longbranch Church Fellowship Hall. It is sponsored by the Pierce County Community Action Agency's Nutrition Program. The public is welcome.

Food ideas and recipes will be exchanged at that time and it should be an instruction and entertaining time for all.

Nutrition clinics will also be held at the Civic Center on Mondays, June 11 and 25 from 10:00 am. until 1:00 pm. Be sure to attend for helpful information on good meals at today's prices.

SUMMER BOOGIE

This is the title given to the day camp program for Peninsula area kids, sponsored by the Peninsula Youth Program.

Three separate camps, two day camps for 8-12 yr. olds and one fitness camp for 12-15 yr olds will begin on June 25.

Day camps will run from 8:30-3:00pm Mondays through Fridays and will include a busy schedule of arts and crafts, nature study, recreation, songs drama, games & special events. A nutritious lunch and snacks will be provided daily and is included in the \$20 a week fee.

The fitness camp times:
Tack/softball/hiking-June 25 to July 6.
Dance/racquet sports-July 9 to July 20.
Basketball/volleyball/soccer-July 23-August 3.

Professional P.E. staff will provide individual and group instruction. Fees are \$40 per two-week session. To register, contact PYP at 858-9938.

FOR SALE: Echo gas powered trimmer-edger with plastic cutter. Handle fully adjustable. \$119.95.
Charlies Saw & Mower

PRIVATE SCHOOL

Our School, a private, alternative education facility located in the Artondale district of Gig Harbor, is now accepting applications to interview for the fall term, which begins September 4.

The school, which opened its doors in January, 1977, has been filled to capacity through this school year. "We seem to have enough interested parents to consider the establishment of another classroom for the upcoming fall term," said Ms. Ann Burnett, Director.

According to Burnett, the school was developed to "kindle the natural urge in each child to discover, to learn, to think creatively, and to find joy in an aware and sensitive life. We provide a place where children can advance intellectually, and at the same time, mature emotionally, developing positive feelings about themselves, and others."

Each child works with an individualized program developed to his own level of learning and emotional maturity.

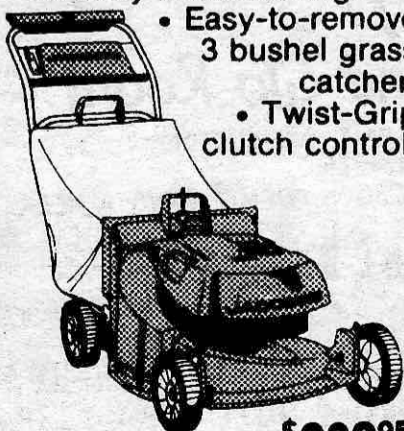
The school relies on many clearly established and successful teaching methods, including Montessori, and the British Infant School. It also incorporates the contributions of Piaget.

Further information on enrollment procedures and tuition are available by calling 265-2150 or 265-2719.

JACOBSEN SUPER BAGGER

Compact, maneuverable, and holds a full 3 bushels of clippings.

- Bag between the handles permits trimming left, right and front.
- Compact and lightweight for easy maneuvering.
- Easy-to-remove 3 bushel grass catcher.
- Twist-Grip clutch control.



\$239⁹⁵

CHARLIE'S SAW & MOWER

1 mile North of Key Center on Hwy. 302
10109 State Road 302
884-2960

9'S FAIR HARBOR MARINA

MONTHLY AND DAILY MOORAGE
GAS OPEN 7 DAYS A WEEK OIL
BAIT-TACKLE-GROCERIES-HOT SANDWICHES

P. O. Box A Phone 426-4028
Grapeview, WA. Res. 275-6417

Behind Treasure Island

Glen P. Grosse Photography Peacock Professional Bldg. Gig Harbor, WA

858-7228

PASSPORTS

COLOR VISA I.D. BLK. & WH.

PORTRAITS

SENIORS STUDIO OR OUTDOORS FAMILIES

COMMERCIAL COPIES

SUMMER TIME IS CAMP TIME

NIMRICK RANCH

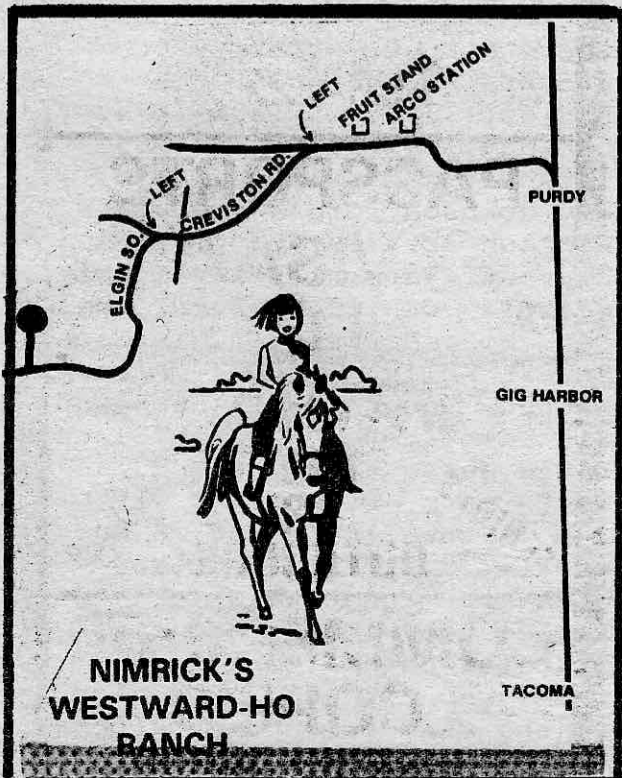
Welcome in the summer of '79 to the wonderful world of horses. Nimrick's Westward Ho is a ranch designed especially for girls who love horses.

Our program of horsemanship include care, grooming, and feeding in addition to basic riding. Each girl will be assigned her own horse and tack, making it possible for her to learn responsibility under supervision.

The ranch is located in a beautiful, natural setting in the Minter Area and ideal for trail riding and summer fun. Additional planned activities are outdoor cooking, swimming, hiking and crafts. In addition to our regular schedule, we now have officially added a horse show on Fridays, complete with ribbon awards. A happy way to end a memorable week.

Our modern bunk-house and well-balanced meals will only add to your daughter's happy memories. Camp is for girls 9 through 16. The basic weekly rate is \$168.16. There will be weekly sessions from June 17 to August 3. For registration or information call 857-2625.

The Nimricks are having open house for prospective campers and their families on June 10, from 2 p.m. to 6 p.m.



MIRACLE RANCH

Miracle Ranch offers an exciting summer opportunity for your children, grades 1 to 6 with pony riding, boats, crafts, puppet shows, archery, singing, Bible stories, swimming and games, from June 18 to August 31.

It all happens on the beautiful 70 forested acres of Miracle Ranch camp on Horseshoe Lake. There is: Trained staff of counselors to supervise all activities, registered nurse on duty at all times, hot lunch served in our dining hall and for further details:

Miracle Ranch
15999 Sidney Road
Port Orchard, Wa. 98366
(206) 857-4425



CAMP SEYMOUR

Camp Seymour, operated by the Tacoma YMCA, is preparing for a full summer program of both swimming and camping programs.

The season starts with a mini-camp from June 25-29 and ends with family camp on the Labor Day weekend. In between there will be weekly camps and swim classes.

For 7th to 12th graders there are bike trips, back pack outings and canoe trips scheduled.

The three swim sessions:
June 25-July 13
July 15-August 3
August 5-August 25

A family membership will be \$30.00; an individual, \$20.00. Swim lessons will be \$10.00 per session for members, \$15.00 for non-members. The guest fee is 50¢.

For information about these or any of the programs call Cliff James at Camp Seymour, 884-3392 or Steve Taylor, Tacoma YMCA at 564-YMCA.

CAMP WOODWORTH

Under the sponsorship of Northwest Bible Ministries, Camp Woodworth near Penrose Point has expanded its facilities to include 350 children over a five week season. Five additional churches of this area will be participating this year with staff and children, including Lakebay Community Church.

That time of year, so exciting to boys and girls is almost here! CAMP TIME! Many of the children who have gone before can hardly wait for its arrival. The joys of fellowship, Bible stories, recreation, camp fires, songs and missionary hours, in a beautiful setting, away from town, close to each other and to God.

Costs are increasing and we now need \$30.00 for Junior Camp and \$35.00 for Junior and Senior High Camp. We realize some children will find it harder financially to come so we provide "Camperships" so no child will be prevented from coming because of finances.

Camp facilities are on a 7 acre site; cabins for 80 campers, a modern kitchen dining room, Margaret R. Long Memorial Chapel, Schafer Memorial Center includes 50 x 80 gymnasium fellowship room with volleyball, basketball, ping pong and for indoor meetings, a crafts building, athletic field, a large wooded area, and 300 ft. of beach on Puget Sound equipped with a ramp to diving dock with slide, boats and paddle boards, and a roped off swimming area.

To register, call Camp Director, Northwest Bible Ministries, Tom Cromie at 884-2365.



Little by LITTLE

By Ruth Little

Several months ago I read a review of a feature film which had just been made and would soon be seen on television. It sounded so interesting and was so highly recommended that I made a note to be sure to see it when it was shown.

The film is called "Deal" and is about one of television's most lucrative shows, "Let's Make a Deal", produced by Monty Hall and Stefan Hatos.

The few times I watched "Let's Make a Deal" with the participants gurgling and squealing with ecstasy, the winners gaping like zombies; I found it devastating in what it tells about American's capacity for self-deception.

Forty million persons watched; Monty Hall kissed 20,000 times in the 3800 shows; together, he and Hatos make eleven million dollars in 1976 and since 1965 the pair has earned 44 million dollars. The creators of this ridiculous spectacle are defensive. They consider the show to be a symbol of American life--the glories and rewards of competition.

It required not one scintilla of skill, just an idiotic costume. No one ever lost a dime by over-estimating the tastelessness and stupidity of the public!

Hatos, who was a very talented and promising musician (an oboist) and could have had a successful career as a musician, confessed that "the life of a musician would have been far more gratifying."

The farmers with strawberry fields are again requesting that the ban on hiring 10 and 11 year-old pickers be relaxed. So far they have been unsuccessful because "the pesticides in the strawberry fields is too much of a health hazard for 10 and 11 year-olds."

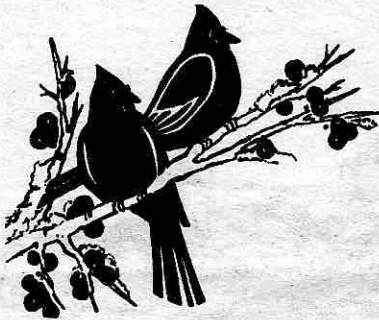
How about the strawberries? Can these berries that are actually touching the sprayed plants be safe for all of us to eat?



Last year my neighbor, Dr. Gordon Alcorn, told me of a book he had just published, Northwest Birds; distribution and eggs. It wasn't until recently that I had an opportunity to examine the book and learn what valuable information it contains in the fields of nidology and oology. (Those last two words should send you to your dictionaries.)

Dr. Alcorn has had a long and distinguished career as a zoologist and probably knows more in his fields than anyone in the United States. His book will please the experts but it also contains much information for the amateur about eggs, size and color; nesting and nest-building; incubation; and hatching.

Did you know that every-time the nuthatch enters his nest, he deposits a drop of pitch at the entrance. Supposedly to keep out insects; birds are wonderful!



WHAT WE WOULD LIKE

The same sun that reddens your skin, bringing you pain, will ripen your wheat, bringing you bread. The same rain that wipes out your picnic will help your tomatoes to grow. All we ask of Nature is moderation and friendly behavior--and we hope we can receive the same from our fellow man.

Farmer's Almanac 1979

NEW KEY CENTER BUSINESS

A brand new business, Key Center Realty, Inc., has opened its doors in beautiful downtown Key Center.

Located directly across the street from Jerry's Cafe, Key Center Realty has a staff of four to handle your Real Estate needs; Lee Williams, broker, and Barry Hunter, Fran Harrison, and Jeano Gazabat, sales personnel. All four have worked in the Peninsula area for more than a year.

An open house will be held Friday, June 1st, from 1 p.m. to 4:30 p.m. We hope everyone will stop in to meet us.

VET CLINIC OPEN

The Minter Veterinarian Clinic, located next to Native Gardens Nursery on #302, is affiliated with the Purdy Veterinarian Hospital. It is now open by appointment from 9 to 12 and 2 - 5, Monday through Friday. Doctors Philip T. Lawson and Terry N. Teeple are in attendance at the clinic. Watch for the future opening of the clinic for full-time service.

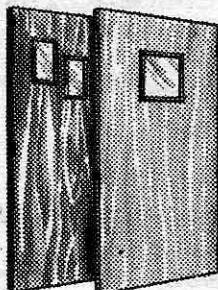


WINNERS AT RENO NIGHT

Twenty winners of the drawing held for the overage on the last Civic Center Reno Night included: Donald Graham, Gig Harbor, Brian Dawson, Olla, Milly Niemann, Vaughn, Grace Barret, Auburn, Pete Bussard, Longbranch, Robert Daniel, Tacoma, Michael Tovey, Lakebay, Walter Deuer, Manchester, Katie Murray, Seattle, Ken Johnson, Gig Harbor, Ken Pierson Jr., Puyallup, Earl Ruppert, Vaughn, Betty Schmitt, Seattle, Daniel Sawford, Shelton, Hody Rasmussen, Gig Harbor, Stuart Kelly, Tacoma, Margaret Werner, Vaughn, H.E. Haarmann, Gig Harbor, Dana Mussig, Tacoma David Harse Wauna, and Nolan Montgomery, Lakebay.

A total of \$1736.38 was equally distributed to the winners. Congratulations to all of the winners and our grateful thanks to all of those who attended, and also to the many volunteer helpers.

KEY WESTERN BUILDING CENTER & HARDWARE



WALNUT PREHUNG DOORS

REG. \$24.95

SALE! \$21.95

SUBJECT TO STOCK ON HAND

LOCATED IN KEY CENTER

WILMA STEPHENS RETIRES

This is the end of an era for Vaughn School. Wilma Stephens is retiring this June. She has taught first graders in the same room since 1955, when Vaughn School opened. Mrs. Stephens has been a teacher for 42 years. She has influenced many lives.

"The Basics" have been her strong points, because that's where the first grade starts. Working with individuals and small groups, as well as the whole class, she helps them progress from the alphabet to reading sentences; from simple numbers to problem solving; from doodlings to drawing real pictures.

Mrs. Stephen's room is a museum of learning. You have to see it to appreciate it - the mirror in which to watch themselves as they sound out words, the charts of numbers and letters, the seasonal decorations and the student's handiwork. They get good preparation for their next years in learning.

North Dakota is Mrs. Stephens home, but she also taught in South Dakota and Montana, before coming to the Peninsula District. Many of her summers since then have entailed summer classes and workshops as she worked toward additional education. In between, she has enjoyed gardening.

Her husband, Walt Stephens, taught German in Peninsula schools for many years and the 6th grade at Vaughn. He is now a bookkeeper.

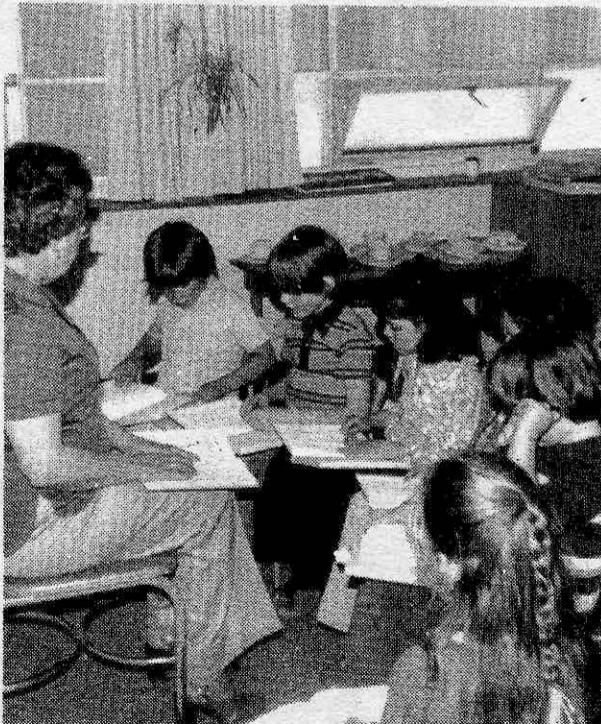
I'm sure Mrs. Stephens will miss school and she will be missed, because she took personal interest in each child.



She thoughtfully sends graduation cards to those students she had in the first grade as they finish high school. She finds it rewarding to keep in touch with those who have completed the twelve years.

Those graduating this year, who were in her room are: Debbie Peterson, Carol & Sheryl Craig, Peggy Hoey, Mike Natucci, Tom Greetham.

I must add a personal note in saying that she taught all 5 of our children, and got them off to a very good start in school, which we sincerely appreciate. We wish Mrs. Stephens a very happy retirement.



HOME TOWN CONTESTANTS WIN!

Former local newlyweds, Andrea and Curt Clinton, with Andrea's family, the Jon Lardners, are soon to be seen on the evening viewing of the T.V.'s Family Feud Game Show. Channel 7 now has their show scheduled to be shown the evening of "May 30th...or maybe sooner". (Show #247).

Near the end of last summer's vacation, Andrea's little brother, Mitchell, was bored and alone watching television when the announcer mentioned that viewers might become contestants by writing in their request. Mitchell did just that and the Lardner family was soon called and invited to "audition". The audition eliminations were completed late in the fall. After waiting several months they were again notified that their filming was scheduled.

Curt said that being on the show is really a great nervous strain, but Andrea loved it. Apparently in the beginning on their game they were not answering the questions too well... until suddenly they found they were the winners and were to play for the Big Money. It was a tremendous thrill for the family to win the Big Money. (\$10,475.00)

Andrea is the daughter of the Jon Lardners of Auburn, California, and the granddaughter of Mrs. E. Cakarnis of Tacoma. Curt is the son of the Franklin M. Clinton's of McEwan Road, Home, and he is the manager of Clinton's Music House at the new Capital Mall in West Olympia. The couple are planning to apply their earnings toward the construction of their new view home on Cooper Point in Olympia.

Not often do our local people win the Big Money on television shows, and we felt that the readers and family friends would be interested in watching the show.

OLD FASHIONED SMOKE HOUSE MEATS

DEDICATED TO FINE EATING

MACON BACON

CHEESE, SALAMI, SAUSAGE

C. M. WHITE OWNER

RETAIL ONLY | 857-4502

Corner of Cramer Rd. & SR 302

LUCILE'S BARBER SHOP

Hours: Tuesday thru Saturday
9 a.m. to 6 p.m.

1 short mile south of Rocky Bay Health Care Center on Hwy. 302 going to Shelton

884-3732

Country Health Foods

NOW AVAILABLE:

FRUCTOSE 14 DAY DIET KIT - \$9.00

KEY CENTER 884-3977

Keynotes

A very special thanks for the "Colorama Fiesta" fashion show on May 4th. Thank you Eleanor Stock, for a great job as Chairperson and also Edith Johnson for assisting. A big thanks to Mike Strange for his serenading during the luncheon and providing the background music during the style show. We also thank the Cootietts, Ashes, Garden Club and also our Civic Center Board. It was a great time for all!

The Peninsula Soccer Team made it to the District Quarter Finals where they were defeated by Jefferson Hi., 2-1. Players from our area are; Al Gore, Doug Hull, Darren Gilman, Kurt Ferguson, and Tom Greetham, all who played a great season. They defeated Wilson Hi., of Tacoma, 1-0.

We would like to thank Sa Vanne Shirley, and her Cub Scouts for their help on the Civic Center grounds. They cleaned out the flower beds and added new plants along the walk way garden in the front of the Civic Center. They are also maining this area for all of us to enjoy. A BIG THANKS to all of them.

People interested in learning more about edible weeds and how to prepare them will have the opportunity of going on a weed walk June 8 (Friday). Meet at the Chase home, second house beyond Vaughn Elementary School toward bay.

Cora G. Chase

Mr. & Mrs. W. Corwin (Cora G) Chase returned recently from a two-week cruise in the Caribbean which was sponsored by editors and publishers. Besides the stimulating meetings with literary people, authors, publishers, editors and literary agents, the very deep blue Caribbean and the interesting islands made it a memorable trip.

Cora plans to tell in detail of the trip at a future meeting sponsored by the Friends of the Library. Date to be announced later.

On Sunday, June 3rd, the Chauncey Browns are observing their 50th wedding anniversary. They have lived in the Vaughn area for the past five years, having moved here from Seattle after retiring from their machine shop business.

Friends of Vaughn Community Church are honoring the couple with a reception at Key Peninsula Civic Center from 2:30 to 4:30 p.m. An invitation to attend is extended to all friends.

The Browns request "No gifts please."

In early May, the Robert L. Coles and daughter Vickie, spent a week in the Indiana area. The occasion was to attend the marriage of their niece, Debora Ann Forsythe to Robert Allen Whittaker. Relatives from across the country gathered together to witness this joyous event.

Congratulations to the ASB Officers of Peninsula Hi, who were recently elected for the 1979-1980 school year: President-Ron Moller, Vice President-Jim Greetham, Secretary- Leesa Wilcox, Treasurer-Miyo Wolf, Environmental Chairperson; Kurt Anthony, Athletic Chairperson- Janelle Rice.

Jim, Kurt and Janelle are all Key Peninsula residents, and Leesa often visits her aunt and uncle, the Carstetter family of Minter, so our area is well-represented.

The Good Old Days were not as good as we like to think they were, nor is the Present Day as bad as we sometimes believe.

Abner Americanus
Farmer's Almanac 1979

Burcar Fireplace Screens
Serving Gig Harbor and the Peninsula Area since 1967

WE CAN SCREEN
"ALL YOUR HEARTH'S DESIRES"

JIM BURCAR FREE ESTIMATES
8026 WARREN DRIVE N.W.

CLASSIFYE SCREENS GIG HARBOR, WN.
265-3468
GLASSFYRE®



Shorewood Real Estate, Inc.

JUANITA SAATHOFF
Realtor

Key Center 884-3303

Key Center Branch
P. O. Box 345
Vaughn, Washington 98394

CHACO MOBILE HOMES

15503 CEDAR PARK RD., S.E.
N. on Highway 16, Right on 154th St.
(Past Purdy) to Olympic View Mobile Manor

"PERSONAL TOUCH SERVICING"
AWNINGS - SKIRTING
COMPLETE ACCESSORIES

TRADE - SELL CORINTHIAN

*FHA *VA *CONVENTIONAL FINANCING AVAILABLE

OUR LOW OVERHEAD SAVES PRICE & COMPARE

PLEASE CALL
857-4471
857-4421
OLALLA





KEY PENINSULA SPORTS CLUB

The Key Peninsula Sports men's Club will hold a card party in the Club house at Jackson Lake June 2nd at 7:30 p.m.

June 14 is the regular meeting nite which is preceded by a pot luck dinner at 6:30 p.m..

June 22 is game nite, with a pot luck dinner scheduled for 6:30 p.m.

June 25 the Pierce County Sportsmen's Council will be guests of the Key Peninsula Sportsmen's Club at Jackson Lake. A social hour will follow the regular meeting.

BRIDGE CLUB

In our recent club championship game, the winners were: Al and Margaret Coe, first place; Amy Dvorak and Mary Craig, second place.

Al is our director and scorer and he does this important job well. The players often don't think how tedious and exacting this work is.

An example: As Al was adding his sheet, one of the players was finishing a telephone conversation. Just before he hung up, the player announced "10-4"--message received. Would you believe Al was 14 points out of balance?

ASHES

The monthly meeting will be Thursday, June 7th at 10:00 am. at Fire Station#2. There will be a report on the Rabies Clinic held recently where at least 130 animals were given shots.

Helen Helm and Souka Erickson will demonstrate making ribbon roses. The Ashes group has purchased orange safety jackets for the ambulance crew.

ORTHOPEDIC GUILD MEETS

The Dr. Penrose Guild will have its last meeting of the season on Thursday, June 14 at the Vaughn home of Mrs. Carlos Keasler. Mrs. Art Gallagher and Mrs. Howard Selby are the co-hostesses for the noon luncheon.

The Guild will discuss its fall project of a silver tea and dramatic reading.

COOTIETTES

The Pennants #609 Cootiettes recently took part in the Memorial Services; a special tribute to our departed veterans, relatives and friends.

With the fuel shortage, we hope our trips to Bremerton Naval Hospital will find the cars full of Cootiettes. The fellows and gals need visitors more than ever. Don't let them down.

Rocky Bay patients are looking for us June 14th, and Cottesmore patients enjoy our visits and the cookies we bring.

There are rumors of picnics in the summer months so keep in touch with the members that come to the meeting. The next meeting is June 21st.

As we are to host the fall convention in Ellensburg, we will have several work parties to make things for the country store. Every one start thinking of projects. This made money for us for our hospital work at the last convention.

By Thelma Cadle W 5

LONGBRANCH CHURCH

Members and friends of the Longbranch Church will be saying good-bye to Rev. James King, his wife Rosalie, and their two sons, as they leave for a three year stay in England. He is a Chaplain in the Air Force. All will join in a potluck dinner as planned in June.



**LONGBRANCH
Community
Church**

Sun. Sch.: 10 a.m.
Bible Study: 10 am
Worship: 11 a.m.
Dr. James King
Longbranch, WA

GRANGE

Pomona Grange #60 presented the following Blue Ribbon awards in the National Grange Needlework Contest:

- Afghan - Carol Krabler, Gig Harbor (who also won Purple Ribbon and going to Sate Convention.)
- Pillow case - Florence Schisler, Tacoma.
- Needlepoint - Myra Foster, Lakebay.
- Sewing Contest (dress) - Dorothy Fields, Vaughn.
- Red Ribbons went to:
- Baby set - Florence Sloat, Lakebay.
- Sweater - Frances Durward, Rocky Bay.

Other awards for the Pomona Lecturer's Contest were:

- ceramics: Frances Durward, four blue ribbons and a purple one to go to state for her old-fashioned shoe lamp,
- toys: Homa Lovegren, blue ribbon for toy-making and a purple one for state,
- driftwood: Homa Lovegren, blue and purple ribbons,
- woodcraft: Bill Temple, red ribbon,
- photography: Dorothy Fields, red and white ribbons.

Gertrude Hannan won second place in the State Grange Essay Contest. The State Grange convention will be June 10-15 in Port Townsend.

The Grange will help with the Civic Center Pioneer Days August 11th.

The next Auxiliary meeting will be Tuesday September 18th at Kay Woodward's home.

Dora Heinrich

**Save up to 14%
on homeowners
insurance**

Call me about State Farm
Newer Home Discount

BILL McMONNIES
Agent

3022 Harborview Dr.
Gig Harbor, WA 98335
Phone: 858-8776



State Farm Fire and Casualty Company
Home Office: Bloomington, Illinois

**HARBOR FAMILY
HEALTH
ASSOCIATES**

4606 Neel Court 858-6181
(Next to the Harbor Water Co.,
off Rosedale Street)

INTRODUCING

ERIC WALTER LURIA, M.D.
FAMILY PRACTICE

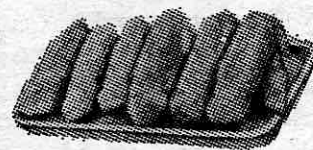
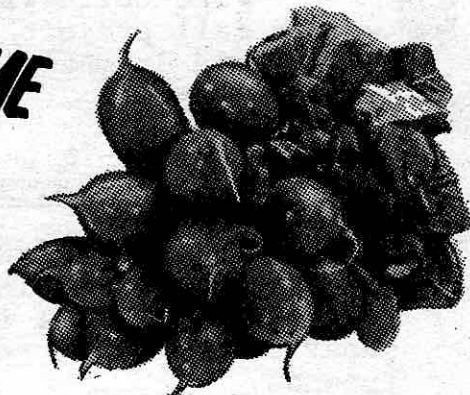
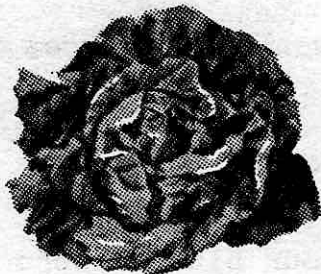
CATHERINE C. LURIA, C.R.N.
FAMILY NURSE-PRACTITIONER

Save Gas
SHOP AT

Walt's Fine Foods

FRESH

PRODUCE SAVINGS TIME



Week of June 4~9

**Parade Cut or
French Beans – 3/1⁰⁰
28^{oz} Parade Tom. – 49¢**

**Hungry Jack 40^{oz} Inst.
Potatoes – 1⁹⁸**

**10¢ OFF all Oroweat
Bread –**

Imperial Margarine – 63¢

Smoked Picnics – 89¢/lb.

Bar S Thrifty Bacon – 89¢/lb.

ARMOUR

**12oz. Sliced Lunch Meat –
1.29^{pkg.}**

Kippered Fish Tips – 89¢/lb

Week of June 11~16

Safeguard Soap – 1 Free with 3

Lettuce –

Parade Cake Mix –

Parade 12^{oz} Egg Noodles –

20 count 33 gal. Trash

Can Liners –

Blade Chuck Stks. –

Arm Pot Roast

ARMOUR

5lb. Can Ham –

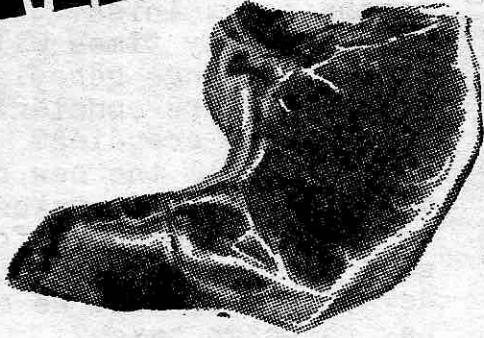
12oz. Armour Bacon –

GAME HENS –

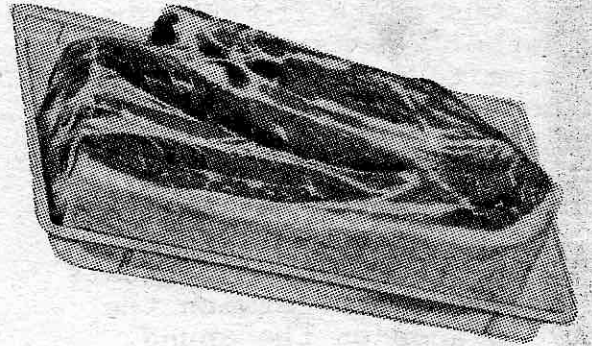
and Al's Meats

in Downtown Key Center

TOP QUALITY MEATS



TOP NAME BRANDS



Week of June 18~23

Parade Whipped Topping — 32^{oz} Sunlight Cooking Oil — 3^{oz} Lipton Instant Tea — 12^{oz} Spam — 1/2^{gal} Shampoo — 1 ⁹⁸	Boneless Pork Roast — Pork Steak — Rib Steaks — Spencer Stks. — Fish Sticks —
---	--

Week of June 25~30

Blue Bird Paper Plates 100 - 9" — Golden Grain Stir-an-Serve Dinners — Scotties Facial Tissue — Spray Kleen Cleaner — Ore-Ida French Fries Reg. or Crinkles —	Turkey Legs — Top Round Stk. — Rump Roast — Cube Stks. — Lean Gr. Beef —
--	---

THE STORY OF UPPER SOUND GRANGE #705

The story of how Upper Sound Grange #705 came into being and took its place in our communities of Glencove, Vaughn, Key Center, etc., goes back 50 years. Not too many of the present Grangers lived here then.

Those were the "horse and buggy" days, - no hard surfaced roads, most of them not even graveled, many with deep ruts. People walked a lot, for cars here were very few.

A bus route from Vaughn to Gig Harbor was established, - the time to make the trip took one hour and forty-five minutes. Soon there was enough traffic that a ferry route between Gig Harbor and Tacoma was established. The waterway to Tacoma was still the main highway. Boats had regular runs between the little places on the Sound, carrying both passengers and freight, including what few cars were purchased by members of the community, (mostly Fords, capable of going 35 miles an hour.)

The kerosene lamp and the lantern were still in use on the farm, supplanted by "hollow wire" systems. Some made electric plants for lighting, and a little later carbide systems came into use.

Farmers milked their cows by hand, walked behind the plow and cultivator and hauled hay on wagons. As a poet once said, "homeward plods the weary plowman."

It was in a setting like this that four tired men met at Ed Johnson's home for a bull session. Those present were Alden E. Visell, Ed Johnson, George McLean, and me, Elmer Olson.

to be continued next month...

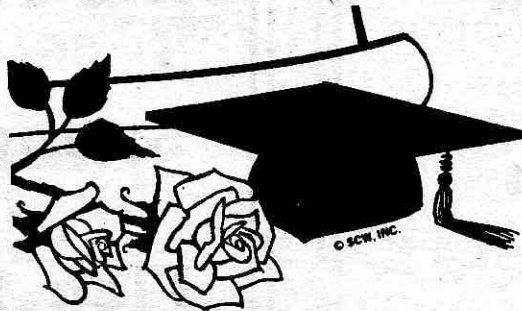
TCC SUMMER CLASSES

A Watercolor class will be offered by Tacoma Community College at the Vaughn Elementary School. It is for non-majors. It will be a study of basic techniques of watercolor, including projects in still life, landscape and experimental composition. The fee is \$51.00. It runs from June 19th to August 16th, 9am-12noon Tuesdays and Thursdays.

Other Classes being offered in Gig Harbor at the Peninsula Youth Center and the United Methodist Church are: Consumer Economics and Personal Finance, Real Estate Professional Practices, Mathematics Laboratory, Modern Jazz/Disco Dancerize, Power Reading, Drawing/Sketching, Oceanography, Running Class, Slimnastics/Yoga. For more information, call TCC, 756-5018 or Peninsula Coordinator, Joan Fandel, 265-3680, evenings.

Senior Citizens may register for any of these classes for \$2.50 on a space available basis.

Please refer to our May issue for detailed descriptions of all the courses offered here on the Peninsula



MERIT SCHOLARS

Peninsula High School was recently notified that seven students have been designated as potential Merit Scholarship winners in 1980.

These students are in the upper 5% of the more than one million who took the test in the fall of 1978.

Peninsula can be proud that this is the largest number of students that have qualified for this honor. CONGRATULATIONS to: Tracy Hamblin, Ron Good, Ron Moller, Scott McKillop, James Kenney, Jim Greetham, and Scott Alvar. The latter two are from the Key Peninsula.

OPEN LETTER TO

PENINSULA RESIDENTS

Is there anyone out there, with the exception of realtors and developers, who want to see housing developments popping up all over the peninsula?

Most of us complain in vain because we believe you can't fight "city hall".

How many wells can be drilled before the supply begins to diminish?

How many times will your children change schools because boundaries are constantly changing to ease crowding?

How will the new developments effect your taxes? Will we all eventually be forced to sell our 5, 10 or 20 acres to developers because we can't pay the high taxes?

Is it one of our goals to wipe out the wildlife populations?

Are we all willing to sit back and see our beautiful forests destroyed?

When will the term "suburban slums" become a reality rather than a future threat?

It's time to speak out. Write your legislators, our governor, state representatives and senators, environmental impact organizations. Let them all know you are concerned. Find out what we can do to save our environment. How we can form an organization to fight the developers.

If we don't speak out now, we may as well dig our own graves, lie down in them, and wait for the bulldozers to bury us.

Sincerely Yours,
Cheryl J. Schuelke

**BUTTONS
AND
BOWS**

K.C. CORRAL
Key Center
884-3971

Start summer with -

**COOL!
COMFORTABLE!
EASY CARE!**

T-SHIRTS

in fashionable colors,
styles, and a variety
of materials!

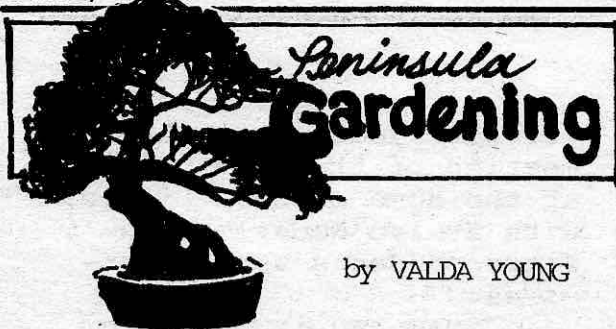
Peninsula Wood Stoves

STOVES OF ALL SIZES AND TYPES
ALL AIRTIGHT

CHIMNEY BRUSHES AND
ACCESSORIES

VISA
857-6836
MC

NEXT TO WAUNA POST OFFICE



by VALDA YOUNG

Second plantings of lettuce, radishes, carrots will keep fresh supplies ready when the earlier ones are gone. It is not too late for all the warm weather vegetables and annual flowers. Use seeds or the little flats of seedlings. The small ones grow faster than the larger sizes and often the seeds will catch up and bloom as soon as the started plants.

Watch for all the critters that chew, suck and eat your plants. Consult your nursery man for the proper sprays and

dusts. He must pass a rigid course before he can sell or advise you how to use them.

The naturalistic gardeners have a long list of home remedies, but none are really effective if you have a bad infestation. This is especially true of the various moulds, fungus, and virus infections that plague us here.

This is already a dry season in this area. Light sprinkling is a waste of water and can even damage plants. The roots will turn up to get the surface water and be burned the next day. The deeper roots can be induced to grow the safer your lawn or garden will be in a year of scarce water, so apply it deeply and usually no oftener than once a week.

Growth is rapid now so feed regularly. Perennials and spring flowering shrubs will set a good supply of buds for next years bloom if fed now. Roses, Chrysanthemum, dahlia, should have a feeding at least once a month. Hanging baskets, fuchsia, tubrous begonia, usually grown in containers with small soil areas, require fertilizer and water weekly to keep them in the constant bloom we want. Any standard 5-10-10 fertilizer is good. For the weekly feedings alternate it with fish fertilizer and a zero nitrogen formula. One of these is called "Bloom".

Your resting house plants often benefit from a stay outside in a shady protected spot. Water only enough to keep them alive, and do not fertilize. Their show off time is in winter. Do bait for slugs in the area!

SINCE 1948 WE HAVE OFFERED

EXCLUSIVE LETTERPRESS PRINTING



Letterpress Printing from metal type only. No Camera Ready Copy needed. Sent Postpaid & Insured in Continental U.S.A. if your order amounts to \$10.00 or more. Orders of \$5.00 or less, add \$1.00 extra for postage & handling. Orders from \$5.00 to \$10.00, add 75¢. Orders sent by Parcel Post & UPS. Bankcards (VISA & MasterCard) accepted over \$10.

ENVELOPES

Printed 4 lines or less	100	250	500	1000
#6 1/2 White (3 1/2 x 6 1/2)	\$2.65	\$ 5.40	\$ 9.25	\$15.50
#6 1/2 Brown Kraft	2.70	5.60	9.50	16.20
#7 1/2 White (3 1/2 x 7 1/2)	3.50	6.95	11.75	18.75
#9 White (3 1/2 x 9)	3.50	6.95	11.75	18.75
#10 White (4 1/2 x 9 1/2)	3.50	6.95	11.75	18.75
#10 Brown Kraft	3.80	7.25	12.25	19.60
#10 White, 25% Rag	4.20	8.50	16.75	29.00
#10 White Window	4.00	7.50	13.00	23.50
6 1/2 x 9 1/2 Brown Kraft		8.70	16.50	29.00
9 x 12 Brown Kraft		13.00	24.00	44.50

20 lb. BOND LETTERHEADS

Standard "Middle-top-of-sheet" Set-up only.

Printed 4 lines or less	100	250	500	1000
8 1/2 x 11 Exclusive White	\$3.00	\$6.25	\$10.90	\$17.50
5 1/2 x 8 1/2 Exclusive White	2.50	4.60	8.95	13.50
8 1/2 x 11 Management White	3.25	6.50	11.50	18.50
5 1/2 x 8 1/2 Management White	2.75	5.20	9.50	15.00
8 1/2 x 11 White, 25% Rag	4.15	7.95	15.00	26.50
5 1/2 x 8 1/2 White, 25% Rag	3.30	5.90	11.50	19.50

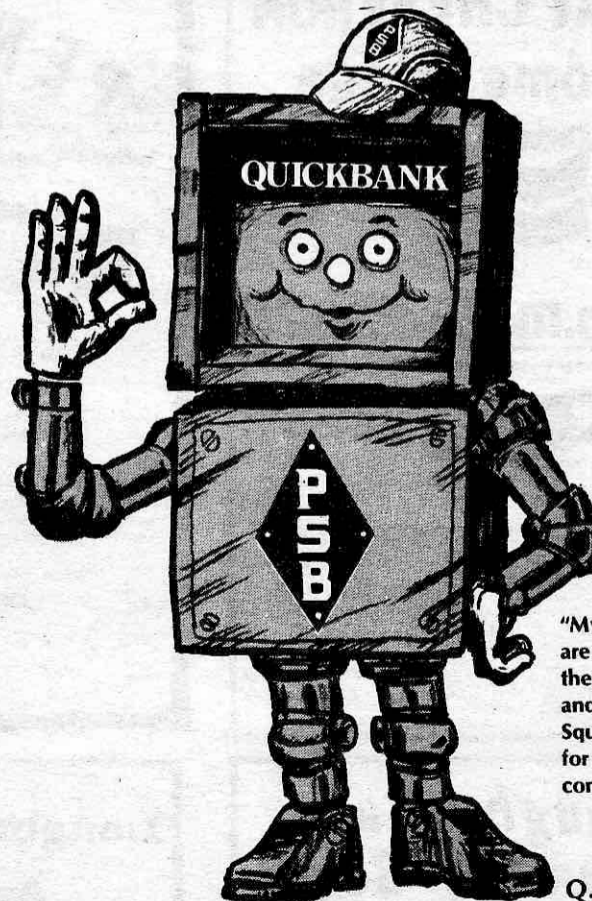
Extra lines over those allowed — 50¢ per line. All items printed in black ink. We print about 40 items in small lots. List & few samples — 15¢.

BEACON WHOLESALE PRINTING CO.

P.O. BOX 1175
GIG HARBOR, WA. 98335



"I'm big on FREE and EASY service. 24 hours every day!"



"My cash machines are located at the Gig Harbor and Point Fosdick Square offices for your convenience."

Q. B. Peninsula

And I don't charge YOU to handle YOUR money. I'm just FREE and EASY."



The Peninsula State Bank

Gig Harbor

Purdy

Point Fosdick Square

Member FDIC

Key Peninsula Services

JACK BURTON
884-2877

BURTON
MACHINED PRODUCTS

TUES. THRU SAT.
7:00 A.M. TO 3:30 P.M.

KEY CENTER, WA. 98335

DG's Farmers Insurance Group

Myers Professional Building
7108 Pioneer Way, Suite No. 2
Gig Harbor, WA 98335

Bus Phone 858-8961
Res Phone 858-8671

DEE GORSUCH
Agent
10 - 5 Mon. thru Fri
NO SAT.
Sat. & Eve. by Appt.




Pastries Cont'ental!

Monday-Saturday 8 - 6

SERVED DAILY: Quiche, Omelettes, and Crepes.

PASTRIES TO GO! WEDDING CAKES! SPECIAL PARTIES!

9016 Judson Ave. - Gig Harbor
Across the street from Triftway
858-7424



LAND CLEARING
ROAD CONSTRUCTION
BANKRUN - GRAVEL
FILL DIRT HAULED

Active Construction

P.O. Box 191 - Gig Harbor, WA 98335
Bus. 858-2380 - Eves. 884-2884



Buy - Sell - Swap

Key Center Trading Post
(206) 884-2220

7 MILES WEST OF PURDY ON HIGHWAY 302
RT. 4, Box 4627 DON & LIANA FEGLEY
GIG HARBOR, WA. 98335


MINTER CREEK DRILLING
and
Complete Water Systems
Pump Sales & Service

EARL FOUTCH
Owner

857-4609
Gig Harbor



LAKEBAY CHEVERON
at the home bridge



8a.m.-6p.m. 884-3828

PENINSULA RENTALS

Located 1 mile north of Key Center on S.R. 302

Contractors' Equipment



WELDING

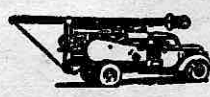
OPEN 7 DAYS A WEEK

884-2960

R. B. DRILLING & GEN'L CONTRACTING

EXCAVATING
HAULING
HOME CONST.
MASONRY
REMODELING

P.O. BOX 63
VAUGHN, WA
884-3567



Vaughn Bay Lumber Co., Inc.

Dale Van Slyke 884-2874
Harm Van Slyke 884-3738
Tom Van Slyke 884-3428

LOGGING ONLY
Route 4 Box 4712
Gig Harbor, Washington 98335



Longbranch Automotive Center

AUTO REPAIR
+ Domestic
+ Foreign

JERRY HANSEN
Longbranch, WA.
South of the Church
(206) 884-3272

VAUGHN GARDEN CLUB

Officers were chosen for next year during the May meeting of the Garden Club at the home of Ruth Little, with Evelyn Nederlee and Florence Jones as co-hostesses.

Starting in September, Beulah Kupka will be president, Helen Helm, vice-president, Marylou Moore, secretary/historian, and Florence Jones, who has served as treasurer for ten years, retaining that office.

Plans for next month's meeting were discussed. This is the annual picnic and final meeting of this year. It is a pot-luck and will be held at the Lake Holiday Club House. Bring your clubs and plan a fast round on the golf course. Sylvia Johnson is the hostess.

A tour of the yard followed the business meeting, where Ruth pointed out seven

different kinds of ground cover, some in bloom. She has many beautiful and interesting plantings, including wisgeria, clematis, Japanese lace vine, red bud tree, and pink dogwood.

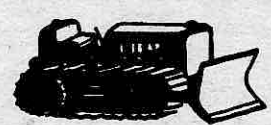
In all, there are 43 different specimens of trees planted in her yard, the original home of the Harri-man family, Vaughn pioneers.

Evelyn and Ruth gave instructions on making note paper or greeting cards with dried flowers and wax paper, showing several lovely examples. We had a guest from Tacoma, Aileen Hammond who is staying for a few weeks in Lakebay.

Remember the pot-luck picnic at noon on Thursday, June 21. Meet at the Civic Center at 11:45 to pool rides. Each member should bring her own service-cup, plate and silverware.

dump truck
backhoe
grader
blade

GRADER SERVICES
884-2271



PHIL RADCLIFFE
route 1, box 95c
lakebay, wa 98349

top soil
road gravel
rockery rock
crushed rock

Alcoholics Anonymous and Al-Anon Groups Meet

MONDAY - 8 p.m. Vaughn School

FRIDAYS - 8 p.m. Longbranch School
(3rd Friday of the month
AA is open to the public)

AA Call: Lee - 884-3424
Hank - 884-3023

Al-Anon: Jean - 884-3120
Betty - 857-2041

Key Peninsula Services

THE PLACE TO GO IN
BEAUTIFUL DOWNTOWN KEY CENTER
IS THE

KEY CENTER TAVERN

HOME FEED & GROCERY
9-7 weekdays / 11-6 Sundays
884-2321

Featuring "Choice Beef"
fresh Produce
fishers Feed
friendly Service

Olympic West Drilling Inc.

858-7226
GIG HARBOR

State Licensed

SPECIALIZING

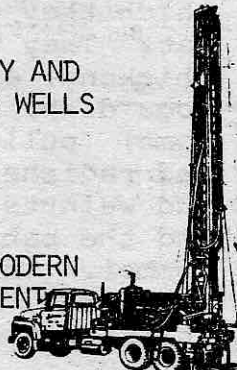
IN SINGLE FAMILY AND
COMMUNITY WATER WELLS

FEATURING

THE LATEST IN MODERN
DRILLING EQUIPMENT



Cable Drill



Air Rotary

FREE ESTIMATES

Bo-Mac Gravel Co.

RT. 2 - BOX 360-C
PORT ORCHARD, WA. 98366



OPEN SATURDAY

R. F. "Mac" McCloskey
PARTNER

876-2003
857-4185

D&M BUSINESS MACHINES

TYPEWRITERS - ADDING MACHINES - CALCULATORS
CASH REGISTERS - COPY MACHINES

SALES REPRESENTATIVE
JIM EWING

474-8497
2520 SO. TACOMA WAY
TACOMA, WASH. 98409

Johnson Bulldozing We Dig It!



BULKHEADS
EXCAVATING

SPECIALIZING IN BACKHOE SERVICE
WITH A SMILE

884-2362

884-2607

Marcia's Styling

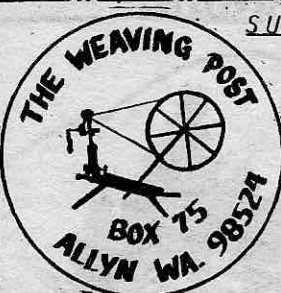
Salon

NOT FOR WOMEN ONLY

FASHIONS - JEWELRY - HAIRSTYLING

KEY CENTER

884 2479



SUMMER HOURS:

Wed. thru Sat.
10 a.m. - 5 p.m.

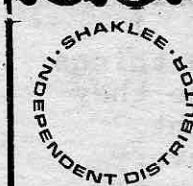
- Needlepoint,
- Embroidery,
- Spinning
- Knitting,
- Weaving

275-3868

Call

for Details

On Highway 3



We'll call on you!®

LOUISE FLANIGAN

CALL: 857-6398



SHAKLEE CORPORATION IS A MEMBER OF THE DIRECT SELLING ASSOCIATION

NO JOB TOO BIG!! NO JOB TOO SMALL!!
DON'T CUSS-CALL US!!

HOLLAND PUMP COMPANY



- *Residential & Commercial Water Pumping Systems
- *Complete Pump Repair Service
- *Irrigation Systems
- *Goulds Pumps

For Drilling Call:

OLYMPIC WEST DRILLING CO.
858-7226

CALL: Jim Holland
265-3776
Gig Harbor

JERRY'S CAFE

DOWNTOWN KEY CENTER

884-3707



The Fruit Stand

LOCATED 2 1/2 MILES WEST OF
PURDY ON HIGHWAY 302



SERVICE

(formerly Len's Arco)

857-4983

9401 State Road 302

HOURS: Sun. 8 a.m. to 8 p.m.
Fri. & Sat. 6 a.m. to 9 p.m.
Mon. - Thurs. 6 a.m. to 8 p.m.

Harv Ennis,
owner

Pete Bercher,
shop manager



SONGBIRDS

Some years ago an agreement was entered into between Mexico and the U.S. to protect birds that migrate between the two countries. It was intended to prevent killings of song birds.

Brother Crow, also a traveler, was included, purely by accident. So it is unlawful to hunt crows for sport, as it used to be, and their numbers are increasing.

What good are crows? A few winters ago I noticed them eating the caterpillar egg cases off my sister's apple trees. There was a heavy infestation, as I can show on the slides I have, and the crows nearly cleaned them out. Crows must eat cutworms and other pests as they search gardens and fields continually.

They will eat fish cleanings and similar garbage neatly and quickly. Crows seldom fight over food. A second crow will grab food dropped, but number one simply accepts the loss. I wish I knew more nice things about them. Of course they do not squawk all night, chase cars, or foul everything in sight, like man's best friend, but we hate them (the dirty corn eaters!)

Crows have a funny antic called anting. For some reason, they pick red ants off an ant-hill, and place them in their feathers. I have watched them, so I know it is true. About three years ago, I decided to train these black garbage disposals to come on call. They shortly learned that my loud CAW meant food, and even after two month's absence, they remembered perfectly when I called. My dream was to get them tame enough to eat from my hand. Not a chance! They will only come down and feed when my back is turned. Face them and away they go. Never trust a honky!

A neighbor had me shoot at crows that were eating her corn. I got one. It was hung above the corn patch. No crows came there for several days. On the fourth afternoon, five crows were in

the corn. I yelled at them; "Get out of there, you black devils!" They left, then I realized they were a different gang, and did not connect the dead crow with trouble. My yelling cleared things up and like the first gang, they left the corn alone after that.

Many times we have watched individual crows hide food. They always top off their cache with a maple leaf or similar covering. They remember, and come back to feed later. When courting, one crow will lead another to the hidden food. Bluejays know about this, and go about picking up leaves, looking for a free meal.

Of course crows do dirty tricks. They sneak around, quiet as mice, looking to steal baby robins, which they will kill and eat. They will steal baby chickens, eat out of the dogs dish, (when you are not home) pull up young corn and radishes, drop clams and walnuts on flat roofs, and the babies squawk all summer. They are officially songbirds, and probably think they are making music.

SHOREWOOD UPDATES SERVICE

The Key Center branch of Shorewood Real Estate, Inc located in the K.C. Corral next to the fire station is under new management, as announced by the firm.

The public is invited to stop in anytime during office hours to get acquainted, have coffee and see a demonstration of their new computer service.

As members of the Tacoma Pierce County Board of Realtors and the Multiple Listing Service, the firm has up-to-date information on the real estate market through their computer service.

By offering this new service for the first time in the Key Center-Longbranch area, the firm feels that can better serve people in buying or selling their home or property.

GPA SPEAKERS AVAILABLE

The Freeholder-Home Rule Speakers Bureau, sponsored by the Growth Policy Association of Pierce County and League of Women Voters, will arrange to provide speakers on the Home Rule Program in Pierce County.

There is no charge to any organization interested in their program. Trained speakers, non-partisan, will present pertinent issues in a non-political manner to clarify these issues. For further information, call the GPA office in Tacoma at 565-5444.

Key Peninsula



Westward-Ho Ranch

girls horse ranch



harry & barbara nimrick

(206) 857-2625
route 4 box 4783-1
gig harbor, washington 98335

designed for girls who love horses



WAY BACK WHEN...

continued from last month

The following is a copy of Fred Prater's writings sent to the Key Peninsula Historical Society by his daughter Doris Prater Schaffer of Olympia. Mr. Prater is deceased but shares his life with those who follow him by describing "life as it was, here" almost a century ago.

For some unknown reason my grandfather, James, bought a little black skull cap like Jewish men wear and he wore it the entire trip to the discomfiture of my mother. My mother did not wear the Quaker cap and shawl as her mother had; and many generations of Quakers prior to her; but she had very definite and vocal ideas as to what was proper.

My father purchased a banana a piece for my sister and me; the first we had ever tasted. I thought it delectable, food for the gods. Lora took one little bite, spat it out the open window and threw out the rest of the banana too. I deplored the loss of that banana all the way across the country, and was very put out with Lora and the fickle ways of women; or perhaps I mean the finicky ways. There was, of course, no thought of getting another. This had been an extravagance, a rare treat. Sometimes I am sorry for today's children who have so much that it is difficult to explain to them the essence of a treat. By the way,

**DUANE E. ERICKSON
AND
GEORGE F. MARSICO
ATTORNEYS**

ANNOUNCE THE OPENING OF
A BRANCH OFFICE AT THE
KEY CENTER K. C. CORRAL

TELEPHONE 884-2499

If no answer, call GIG HARBOR, 858-3500 or TACOMA, 474-9571 for Duane Erickson or TACOMA, 572-3633 for George F. Marisco.

HOURS: Thursday, 1:30 to 5pm
Saturday, 9 to 12 noon

I don't believe that I mentioned that my cousin, Paul Holaday, went with us. He was the son of mother's oldest sister, Cynthia. He later opened a tin-shop in Tacoma after working awhile for Uncle Ben. He became quite well-to-do, largely due to having invented a small, portable tin stove much in demand by gold-seekers outfitting themselves for the Klondike.

After paying the first month's rent, the freight and drayage, and the fare for all of us on the Emigrant Train, my father, George, had exactly eight dollars left to stand off the wolf. We stayed with the Hunts a couple days and then father rented a small house at 19th and South Yakima. He went to work as a carpenter, building the Longfellow School. The wages were high compared to Kansas, and work plentiful. Tacoma was a booming town of 25,000 (their count). We arrived July 10, 1887, just a week late for the celebration for the completion of the Stampede Tunnel.

I got a paper route right away assisted by the Malstrom boys. We delivered a morning paper, "The Tacoma Daily Ledger". My route was in the old McKinley Hill district and East D vicinity. We "paper boys" were down at the press room at three o'clock in the morning. We folded our own papers, taking them flat from the press. I was through delivering by six a.m. and home by 7.



**Telephone Utilities
of Washington, Inc.**



A subsidiary of Telephone Utilities, Inc.

It was here, at Rocky Bay, that we enjoyed the happiest years of our family life together. Edith was only six months old when we left Kansas, and our last sister, Belle, was born at Vaughn in June, 1892. Mary J. Van Slyke who came West with us on the train attended my mother as midwife. Belle was christened Hetta Belle but she did not like the Hetta, and dropped it.

It was August 27, 1887 when father filed on the land; and November of the same year when we moved into the new house which father and grandfather had built during the fall months. By 1892, we had cleared about half of the forty acres, and had it in some state of cultivation. (I believe that the 16 x 24 story and a half house was finished by November; and that it must have been some time later that the larger house was completed). Most of the credit, for getting the land cleared should go to my grandfather, James Prater. His wife, Mary Elam Prater, died in 1880 at the age of sixty-one, after forty years of marriage to James. James, of course, then became a member of his son's family, as was the unquestioned custom. I believe that a daughter, Minerva, had died earlier.

James Prater was still quite a husky specimen, though seventy years old, when we moved to Vaughn. By five o'clock, and sometimes four o'clock in the morning he would have had his sleep out and start rattling stove lids and stamping about until the family would have to get up. Come daylight and the chores would be done, and soon after he would be out in the clearing burning stumps or grubbing them out. Father George had acquired an old gray mare which soon became a family pet, and was a great help in clearing and breaking land.

to be continued next month..

AL'S MEATS

(PURDY TREATMENT CENTER EXIT)

9606 STATE RD. 16 N.W.
GIG HARBOR, WA. 98335

U.S.D.A CHOICE LOCKER BEEF
WILD GAME PROCESSING
CUSTOM CUTTING AND WRAPPING
MOBIL SLAUGHTERING

DON PACK, OWNER & OPERATOR
HOME: 858-3808
MONDAY & AFTER 5 P.M.

858-8421

CELLAR ARTS and CRAFTS



Classes • Gifts • Supplies
Tole and Decorative Painting
Decoupage
Macrame

Hrs.: 11:00 AM-5:00 PM
Sun. 1:00-4:00 PM
Phone 858-9391

7804 Pioneer Way P.O. Box 244-A Gig Harbor, WA 98335

JEFF CHARBONEAU

Road Building Landscaping **Excavating**
Land Clearing Foundations


884-2971 RT. 1, Box 142-A VAUGHN, WA 98394

L.E. Jopp Builders

- ★ Carpenter Work
- ★ Foundations
- ★ Bulkheads
- ★ Concrete Work etc.

884-3841

LICENSED & BONDED CALL COLLECT



Randy's Bulldozing

Lot Clearing
Roads Punched
General Dozing

RANDY NIMRICK Rt. 4, Box 4783-1
1-857-2625 Gig Harbor, WA 98335
857-6703

The Calico Kitchen

OPEN - 10 A.M. - 5 P.M.
TUESDAY THRU SATURDAY

HOMEMADE: SOUP - PIE - BREAD AND
CINNAMON ROLLS

BAKERY GOODS TO GO!
Order in advance

K-C Corral 884-2029
KEY CENTER

John Brewer (206) 857-2253

BREWER ELECTRIC CO., INC.

Residential-Commercial

14519 Peacock Hill Avenue, N.W.
P. O. Box 228 Burley, WA. 98322

DUANE G. FLEMING

Cascade Insurance Underwriters Inc.

2200 6TH AVENUE • TACOMA, WASHINGTON 98403

AC 206/627-3133 Residence 884-3340

TOM'S BARBER & TACKLE SHOP



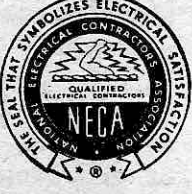
NEW WINTER HOURS
OPEN 10 - 5:30
TUES THRU SAT

Key Center

SMSB
State Mutual Savings Bank
Member FDIC

LOCATED DOWNTOWN
GIG HARBOR PH. 858-9927
Nine offices serving Pierce Co.


ENELCO, INC.



COMMERCIAL - RESIDENTIAL
ELECTRICAL INSTALLATION

P. O. BOX 65 VAUGHN, WASH. DON MILLS PH. 884-2511

MINTERBROOK OYSTER CO.



Open 7 Days
9 a.m. to 4 p.m.

Retail - Wholesale

JERRY YORK

York Insurance Agency
Auto • Life • Fire • Health & Accident

Post Office Box 384 Gig Harbor, Washington 98335 Office 858-6580 Res. 857-6587

CHARLIE'S SAW & MOWER



1 mile North of Key Center on Highway 302
Jacobson - Airens Dealer
Authorized Briggs & Stratton Service Center

Saw Filing Scissor Sharpening
New & Used Mowers

884-2960 Shop Home 857-6286

BELFAIR WOOD PRODUCTS



Shakes, Ridge Cap and Siding
Custom Flat Sawing and Band Saw Shakes
BUY: FLAT SAW WOOD AND SHAKE BOLTS

CR. 5-3432 Home CR. 5-3194 Mill

857-4276

Merle Free Automotive Repair

ALL WORK GUARANTEED

over 30 years experience

1 1/2 MILES ON CREVISTON DRIVE - 1ST LEFT TURN SOUTH OF THE FRUIT STAND

John E. Miller Walter E. Paulsen

Peninsula Accounting Associates

5209 Pt. Fosdick Rd., Suite 203
P.O. Box 676
Gig Harbor, WA. 98335

206-858-8852



THE FIREPLACE CENTER ETC.

Fireplaces & Accessories
Custom Built Fireplaces
Complete Line of Masonry

LEONARD & HILDEGARD HOHMANN
BELFAIR, WA. 98528 Bus. 275-6165 Res. 275-6473



WANT ADS
10c
A WORD
CALL
884-3739

KEY PENINSULA CIVIC CENTER

BALANCE SHEET

DECEMBER 31, 1978

ASSETS

CURRENT ASSETS

Cash on Hand	\$ 95.00
Bingo Change Fund	150.00
Cash in Bank - Gen. Fund	3,021.32
Cash in Bank - Bingo Acc.	1,054.91
Bond Rdemption Reserve Acc.	3,573.24
M & O Levy	9,086.09
Loan Receivable - Bingo	1,725.00
Savings Account	283.25
Inventory Supplies	382.05
Inventory - Pop	441.04
Prepaid Interest - Bond Redemption	2,400.00
Prepaid Insurance	882.68
SUB TOTAL	\$ 23,094.58

FIXED ASSETS

Building Improvement	30,648.90
Building Improv. Depreciation	(1,817.48)
Furniture, Fixtures and Equip.	11,353.10
Furniture, Fixtures & Equip. Deprec.	(3,622.13)
Athletic Equipment	2,243.91
Athletic Equipment Deprec.	(62.33)
Deposits (Light Share)	100.00
SUB TOTAL	\$ 38,843.97

TOTAL ASSETS \$ 61,938.55

LIABILITIES AND CAPITAL

CURRENT LIABILITIES

Bond Redemption Fund Payable	\$ 6,050.04
Bond Redemption County Investment	(72.49)
Loan Payable (Bingo Enterprise)	1,725.00
Medical Aid	21.78
Sales Tax Payable	86.94
SUB TOTAL	\$ 7,811.27

LONG TERM LIABILITIES

Bond Redemption Fund Payable	13,849.90
	13,849.90

CAPITAL

475.58

PAID IN CAPITAL

M & O Levy	44,044.54
------------	-----------

DONATED CAPITAL

6,966.16

RETAINED EARNINGS

(11,208.90)

SUB TOTAL 40,277.38

TOTAL LIABILITIES & CAPITAL \$ 61,938.55

Locally grown strawberries sold by flat, taking orders now. Call 884-2714 after 3:00 p.m.

DOUBLE BED - Beautiful hardwood with inner spring and foam mattress. All almost new condition. \$95. 884-3581

TIRES - Six matching Good-year tires with rims. New condition. Size 7 x 14.5 MH. \$20 each. 884-3581

FOR SALE: 10 gal. fish tank minus heater and fish. \$25.00 cash. 884-3553

1972 Security Camper with tie downs. Sleeps four adults. Price negotible. Call 884-3996

FREE WANT ADS space for teenagers and senior citizens. Call 884-3739

FOR SALE: 1 twin size matching box spring and mattress. Excellent condition - \$20. Twin size bed frame like new - \$15. Call 884-3375 after 5 p.m.

LAWN JOBS WANTED by teenage boy. Home, Key Center, Vaughn area. Your mower. Call 884-2500.

WANTED. House or Apt. on Peninsula or Gig Harbor to rent through summer. Call Jane 871-5053 Port Orchard.



ANDERSON PUMP CO.
SALES & SERVICE
BELFAIR, WA.
PHONE 275-3040

**Is your Dart departing?
Does it droop and dribble?
Don't despair!
Delight it with parts from Perry's**

Olympic Village 858-9149



THE PENINSULA STATE BANK

884-2345

member FDIC

1979

JUNE

HOURS
Monday thru Friday 10 a.m. to 3 p.m.
Saturday 10 a.m. to noon



SUNDAY

MONDAY

TUESDAY

WEDNESDAY

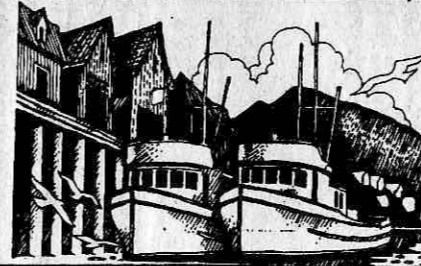
THURSDAY

FRIDAY

SATURDAY



HAPPY FATHER'S DAY



1

2

GRANGE-6:30 p.m.
GR

NO SKATING!!!!

3

4

5

6

7

8

9

Lutheran Church - 9:30
GR 11:30

Brown - Golden Wedding Ann.
GR 2-5 p.m.
NO SKATING!!!!

Sq. Dance Lessons
GR - 7:30

Gym closed for floor refinishing until June 10

Bridge Club
Gr - 7:30 p.m.

Brownies - 3 p.m.

GAME NIGHT - GYM
7:30 p.m. WIN BIG!

Park & Rec. Bd.
7:30 p.m. Office

No Volleyball

Brownies 3 p.m.

NO SAKTING!!!!

FLOOR BEING REFINISHED!!!!

Children's Movies?
Gym 1 - 3:30 p.m.

10

11

12

13

14

15

16

Lutheran Church - 9:30
GR 11:30

NO SKATING!!!!

Sr. Citizen Nutrition Program
GR -10 a.m.-1 p.m.

Sq. Dance Lessons
Gym - 7:30 p.m.
V.F.W. -VFW Rm.
V.F.W. Aux. -GR
7:30 p.m.

Bridge Club
GR - 7:30 p.m.

Brownies - 3 p.m.

GAME NIGHT -GYM
7:30 p.m. BONUS \$\$\$

KPCC Bd. Meeting
7:30 p.m. - GR

Volleyball 10-12

Brownies 3 p.m.

Grange - 6:30 p.m.
GR

Skating 7-9
9:30-11:30

Sq. Dance - 8:30pm

17

18

19

20

21

22

23

LUTHERAN CHURCH - 9:30
GR 11:30

Skating Lessons 12-2
Skating 2-5

Sq. Dance Lessons
GR - 7:30 p.m.

Bridge Club
GR - 7:30 p.m.

Brownies - 3 p.m.

GAME NIGHT - GYM
7:30 p.m. BE A BIG WINNER!!!

Cootiettes - GR
7:30 p.m.

Volleyball 10-12

Brownies 3 p.m.

Skating 7-9
9:30-11:30

Lake of the Woods
VFW Rm. 10-1:30

Children's Movies?
Gym 1 - 3:30 p.m.

24

25

26

27

28

29

30

LUTHERAN CHURCH - 9:30
GR 11:30

Skating Lessons 12-2

Skating 2-5

Sr. Citizen Nutrition Program
GR - 10 a.m.-1 p.m.

Sq. Dance Lessons
Gym - 7:30 p.m.

Bridge Club
GR - 7:30 p.m.

Brownies - 3 p.m.

GAME NIGHT -GYM
7:30 p.m. COME PLAY! BRING FRIENDS!

Volleyball 10-12

Brownies 3 p.m.

KPCC FIREWORKS STAND OPENS AT KEY CENTER

FIREWORKS STAND OPEN AT KEY CENTER
10 a.m. - 10 p.m.

DANCE CLUB
GYM - 9-1