

BOX HOLDER

Key Peninsula NEWS

NON-PROFIT ORG.
U.S. POSTAGE
PAID
PERMIT NO. 2
VAUGHN, WA 98394



Circulation 4700

GOOD NEWS FROM WAUNA TO LONGBRANCH

PUBLISHED BY KEY PENINSULA CIVIC CENTER

September 1985 Volume XV Issue 9



Vote Fire

The Key Peninsula Fire Department will ask voters to lift the lid from the present \$1.00 per \$1,000 of assessed property evaluation to \$1.50 at the September 17 election.

The District Advisory Board, composed of Chairman Tony Tebeau, Avon Gay, Walt Schmidt, Shirlee Marietta, Henry Stock, Joe Mercado, Joyce Case and Don Mastro voted unanimously to support the Fire District's bid as did the Key Peninsula Firefighters' Association.

The move is deemed necessary to provide funds for replacement of three 1958 Ford fire engines and an ambulance now used as first line emergency vehicles and to cover constantly increasing operational, maintenance, and other expenses if the Department is to maintain its high level of service to our community.

To emphasize the Department's predicament, Fire Chief Horace Kanno notes that, "In 1976 we responded to a total of 216 emergencies. Just eight years later, in 1984, we had 248 ambulance transports alone and a total of 718 calls. Our population continues to grow as does the number of homes, business and other structures. The cost of fire and emergency medical equipment increases at a rate of one percent per month. If we fail to replace aging vehicles now, it will be necessary to seek large special levies in the future to meet our requirements. We hope the voters will see the economic merit in making it possible to meet these needs within our regular budgets."

We urge you to vote and to vote YES!



VOLUNTEER HENRY STOCK HELPS CHIEF KANNO WITH MONEY MAKING ACTIVITY TO SUPPORT LOCAL FIRE DEPARTMENT

Primary Elections September 17

Although it is an off-year Primary Election, all Peninsula voters are urged to go to the local polls on September 17 to exercise their franchise on matters affecting the Peninsula area.

This year, there is relatively little excitement on the candidate scene, as only one office has more than one listed candidate. That one is for the six-year position of Fire Commissioner, where incumbent Art Penton, Jr. of the Minter area and Richard Raschle of Home have both filed. At press time it was not certain that Mr. Raschle would campaign strongly for the seat.

For the three positions open on the Key Peninsula Park Board, the three recently-appointed members, Jim Lenfield, John Steiner, and Roy Madsen are all running unopposed. The closest thing to a race here came when two of the three mistakenly filed for the same seat, an oversight that was quickly corrected.

The major money issue on the September Primary election ballot is the proposed levy for Fire District 16, which serves the Peninsula area from Wauna to Longbranch, and which is covered elsewhere in this edition of the News.

All registered voters are strongly urged to make certain of their polling places and to turn out for the Primary.

Park Board Goes For Levy In November



At its August 14 meeting the Key Peninsula Park and Recreation Board decided to put a Maintenance and Operations (M&O) levy on the ballot for the November 5 election. This

Continued on Page 2

KPCC Elections Coming Up

In addition to upcoming elections for other purposes, it is nearly time for the election of a new President and Vice-President for the Key Peninsula Civic Center. The Board has announced that elections for these two very important positions will be held at a general meeting of all residents of our area on Thursday evening, Nov. 14, in the gymnasium of the Civic Center building.

Nominations for these two positions may be made from the floor that evening, together with appropriate seconding speeches. According to the by-laws of the Civic Center Association, the terms of office will be for two years, with the offices of Secretary and Treasurer coming up for election a year from November.

Vikki Henschel, current Vice-President and a prospective candidate for the office of President, encourages all residents to plan to attend this meeting to nominate candidates of their choice. It is also anticipated that several positions on the Civic Center Board will also be filled that evening.

Free CPR Training

IMAGINE THIS:

You're sitting at home on another normal Wednesday night. The children are sound asleep in their rooms and your wife is in the kitchen talking to her mother on the telephone. You reach over and grab your beer and take your last swallow. Then you light up a cigarette and stretch out in your La-Z-Boy lounge chair. As you blow out the smoke your chest starts hurting and feels as if it is tightening around your rib cage. You try to call your wife but nothing comes out of your mouth. You can't breathe and there is that pain in your chest. Your wife walks in!! What will she do? What can she do?

For some answers attend a CPR training session, sponsored by your Key Peninsula Fire Department. Phone 884-2222 or 857-2291.



POST OFFICE BOX 3, VAUGHN, WA.
PHONE - 884-3456

PUBLISHER:
KEY PENINSULA CIVIC CENTER

EDITOR:
SALLY KRUGER - 884-4191

BUSINESS MANAGERS:
TONY AND BARBARA TROTTER -
884-4703

PRODUCTION:
PAULINE FINN CLAUDIA LOY
MARION WAGNER BOB INGERSOL
RENEE BASH RUSS BECKIM
SALLY CORNMAN

ADVERTISING:
Tony or Barbara Trotter -
884-3456 - 884-4703
Office Hours: 9-12 Tues./Thurs

Special thanks to Hugh and Janice McMillan and Kathi Best from the ad department. Also to Tom and Sylvia Smith and Elaine and Max Jewett for their help this month. THE OPINIONS EXPRESSED BY INDIVIDUAL COLUMNISTS AND WRITERS OF LETTERS TO THE EDITOR ARE THEIR OWN. THEY DO NOT NECESSARILY REFLECT THE VIEWS OF THE KEY PENINSULA CIVIC CENTER OR THE STAFF.

ADVERTISING RATES

Single Business Card	9.00
Double Business Card	17.00
Triple Business Card	25.00
1/4 Page	35.00
1/2 Page	56.00
3/4 page	81.00
Full Page	104.00
Classifieds per word12

All advertisement not brought in camera ready will be charged a set-up fee of 10% of the cost of the ad.

All advertising accounts are payable on or before the 10th of each month. Those not paid on or before the 10th will have a 1 1/2% service charge added and will not be able to advertise until the account is cleared up.

Letters To The Editor

MAIL BOX VANDALISM

There are times in my life I wish I had the power to influence the minds of those characters who are prowling in the night destroying our mail boxes. Why are they doing this? Mail boxes are the property of the U.S. government even though they are purchased and cared for by homeowners. Therefore these questionable characters are not only violating the rights of homeowners but destroying government property, too, making themselves liable for prosecution.

I thought for a while that only our road was the victim of this vandalism. A drive around other areas proved me to be wrong.

I remember when my grandchildren were small, one of them spoke up after an event of purse-snatching and laughed about it, remarking that, "The kids were only having fun". Then one day I got ripped off and the whole thing was seen differently.

These acts of destruction must be done by a warped, infant mind, for what pleasure can one get from "chastising" a defenseless hunk of metal, its only mission in this world being to help deliver the mail.

I have to wonder, you out there, why are you doing such an unspeakable thing to your neighborhood?????

The only redeemable thing about all this is that so far no one has died from this vandalism. Except for mail boxes, that is!

Thelma Gill

TO THE EDITOR:

Thank you, everyone, for the honor you gave us to be Grand Marshalls of the Pioneer Days Parade. It was so exciting. Much of the success of all activities go to our caretakers, Brian and Tami. They are invaluable in the honor they give to the Center.

Sincerely,
Eleanor Stock

TO THE EDITOR:

This is a long overdue public THANK YOU to the caretaker of the Civic Center from the Key Peninsula Senior Society.

We had a very successful Arts and Crafts show last fall, and a Flea Market activity last spring.

These committees were headed by excellent chairmen and the committees worked hard during these activities, but we must not take all of the credit for their success.

We had the full cooperation of Brian Nichols, the caretaker. He was always courteous, energetic, and helpful. He was always on top of any emergency.

We meet every Thursday at noon for a potluck, and our room is always clean and ready for our meeting.

It's a late THANK YOU, Brian, and you, too, Tami, but it is nonetheless sincere.

Zoe Rae Sanders, President
Key Peninsula Senior Society

Continued From Page 1

PARK BOARD GOES FOR LEVY IN NOVEMBER will be the second try for the Board for this new levy. A first attempt last May resulted in an 80% "Yes" vote, but not enough voters went to the polls to validate the results. The positive response, and the District's desperate need for the funds encouraged the Board to try again. The Board will be going into the levy bid with three newly-appointed members, Jim Penfield, John Steiner, and Roy Madsen, all of whom were heavily involved in the original concept and completion of the Volunteer Park sports and recreational facility. The actual amount that the voters will be asked to approve will be decided upon by the Board at a special meeting on Sep. 4.

In addition to Volunteer Park, the Park District also owns the Civic Center, where elections for new leadership are also coming up in November. (See related story in this issue of the News). Both the Civic Center and the Key Peninsula Athletic Association (which actually manages Volunteer Park) would share in the funds which the levy could produce.

Volunteers to assist in a campaign to assure the passage of this levy in November are currently being sought. All those willing to help in this effort are asked to call Walt Smith at 884-2884.

TO THE EDITOR:

I wish to publicly thank Brian and Tami Nichols for the assistance, above and beyond the call of duty, that was given me when I chaired the December Arts and Crafts Fair, the Flea Market in March, and the Senior Society party for ninety-year-olds.

It is a real pleasure to work with them for they are always so obliging and cheerful and make themselves readily available. They surely made my job easier. I feel the Civic Center is fortunate to have caretakers like Brian and Tami.

Winefred Smith

TO THE EDITOR:

Enclosed is a small help-a-long donation because we enjoy your publication so much.

When next you see Janice McMillan, please ask her if she would like to check out a restaurant at Black Diamond which we enjoyed on two occasions for lunch and dinner.

Sincerely,
Roy K. Madsen

EDITORS COMMENT: As you can see the editors corner was cut to a mere comment. This says everything about the wonderful support were getting. Thanks for all the articles that we didn't have room for --- we cut the ones that were late --- they will be run next month. Thank you, Thank you, Thank you

CIVIC CENTER LISTS PATRONS

PATRONAGE PROGRAM

The Patronage Program adopted by the Civic Center Association to help finance the Civic Center, is proving successful. Under this program, citizens, businesses, or community groups who donate \$25.00 or more toward the Civic Center will be considered patrons and will be listed each month for a year in the Key Peninsula News.

Contributors for the patronage program are as follows:

1985

JANUARY

Norm, Lisa, Colin McLoughlin
Ray & Frances Durward
Edward & Marian Magner
Charlie & Renie Bash
Active Construction
Key Peninsula Septic Services, Inc.
Dick Noble
Sakura Nursery
J.C. Lujan Construction
Key Center Trading Post
Duane & Margo Fleming
Beulah Kupka
Hugh & Janice McMillan
The Garden Shoppe
Charboneau Construction, Inc.
Chiropractic Spinal Care
Jim & Dianna Sammons
Classic Fashions
D.J. Tire Service
Burley Feed & Farm Supply

FEBRUARY

Collins Chiropractic Center
Maxine Robins
Lakebay Woodworks (John Carlson)
Walt's Fine Foods
Key Peninsula Lions Club
Harold Meyer Drug
Stutz Fuel Oil
Key Center Tavern
Gig Harbor National Bank
Elsie Olson
Roy K. & Ruth Madsen
Agnes Whitmore
Jim & Georgia Penfield
Bill Heine
Lakebay Lumber
Zoe Rae Sanders
Gene & Richard Scott
Arnold & Opal Vital
Key Peninsula Duplicate Bridge

MARCH

Key Peninsula Lutheran Church
Cecil & Margaret Paul
John & Silvia Larson
Key Peninsula Typewriter
Harold Moreland, CPA
Blundell's Longbranch
Chowder House
Longbranch Automotive Center
Colony Real Estate, Inc.
Puget Sound National Bank
(Purdy Branch)

APRIL

Key Peninsula Health Center
(Angel Guild Thrift Shop)
Rena & Margaret Spencer
Key Peninsula Senior Society
Henry & Eleanor Stock
Bill & Virginia Mojean
Jim & Colleen Fassler
Richard & Amy Dvorak
Key Center National Auto Parts
Bernard & Sharon Collins
Carlos & Margaret Keasler
Valley Supply Co-Op
Bob & Barb Gilliam
Sylvia's Stashes & Lashes
The Country Mouse
Movie Magic
China Palace Restaurant
Puget Sound National Bank (Gig Harbor)
Donald & Helen Woiniewicz
Ralph & Hazel Kingsbury
Joe Woiniewicz

MAY

Earl and Mary Knapp
E.W. (Ned) Richards
Key Western Building Center
Charles and Rocena Lane
Jerry and Marjory Hurley
Bill and Reitha Muse
Burton Machined Products
Warren and Ruth Watt
Vaughn Garden Club
Bea Pruski

JUNE

C.W. & Muriel Burhans
Ivar & Mary Highberg
Hank & Pat Clifford
C.W. & Barbara Johnson
Col. Ret. Chester & Muriel Dadisman
Anne Marie & Horace Kanno

JULY

William & Evelyn Evans
Barbara & C.W. Johnson
Robert L. & Betty L. Beal
The Peninsula Gateway

AUGUST

Baha's of Pierce County Peninsula
Joseph and Almada House
William and Virginia Whitten
Judy Wilson
Nathalia (Nat) Knox
Home Port Restaurant and Lounge
Chet's Lakebay Chevron

SEPTEMBER

1984

OCTOBER

Harold & Billie McKinney
Wm. & Marian (Jean) Park
R. G. & Marilyn Vogeler
Paul & Helen Alvestad
Paul's Towing

NOVEMBER

Marilyn & John Bozich

DECEMBER

Edward & Glenrae Hoffman

In Memoriam

Rogner Johnson Julius Stock
William Stock Merle Kupka
Oliver Whitmore David Dadisman

Contributions may be mailed to the Patronage Program, c/o Newsletter, P. O. Box 3, Vaughn, Washington 98394.

September 17 — Mark Your Calendar

When we make comparisons based on county figures our fire district receives the least revenues of all fire districts in the county. Our tax base is \$1.15 compared to \$3.00 plus for others. Besides the Port of Tacoma, this fire district has gone to the voters the least times.

Maintenance and repair costs on

our older equipment are costing our taxpayers more money each year. There have been instances where we have had to machine-make parts for vehicles. This increases our down-time on these vehicles. Eventually the down-time will be permanent.

Remember your firefighters run into buildings that people run out

from. Give them the opportunity to do their job efficiently and safely.

They are our first line of service in any emergency and they also pay taxes.

REMEMBER - A FIRE TRUCK THAT IS ON DOWN-TIME DOESN'T PUT OUT FIRES!!!

Back To School Country Style



*First Day For Margaret and
Glenn Harriman — 1926*



*First Day For Brett and Dusty
Letellier — 59 Years Later*

Esther Harriman tells of her children, Margaret and Glenn, on their first day at school. A long-awaited day according to Margaret, "Now had made me a new dress, and Glenn and I had new shoes - practical brown leather high-tops", she remembers, "We took our lunches packed in metal tobacco boxes with a handle".

"We walked along the waterfront path that went through everyone's yards on the south side of Vaughn Bay and finally through Austin Mill. The schoolhouse was in the parking lot of the building that is now the Civic Center".

Margaret recalls the first few days of school were tough. Brother Glenn wouldn't play with her at recess and she was too shy to join in the games with the girls.

After the first strangeness wore off, friends were made who now constitute some of her oldest friends.

Things haven't changed much in some ways for Dusty and Brett. They still posed for their Mom in their new finery on their first day back to school. There the parallels may end, however, as Dusty and Brett and their friends from Lake Holiday will mount a school bus that will take them to the Vaughn School that is modern and new on the north side of Vaughn Bay. No nostalgic morning walks through everyone's yards along the waterfront for them. Instead a nice warm bus that delivers them to the door of the school dry and safe and without ad-

venture. At least its without adventure once the bus driver convinces them that its nicer and safer to sit down during the trip.

What about education now and then? From listening to local folks that went to that school back then I can't help but think that things have improved.

Its much easier to teach a dry fresh student for one thing - and then how would you like to teach grades 1 through 8 in the same room?

The Big Yellow Bus

By Thelma Gill

An old poem starts, "Did you ever think...". I have a different line for that now. It goes like this: Did you ever think when those yellow buses roll by that the future of our whole lives is riding therein. Our future lawyers, presidents, senators, legislators, governors, and business men and women are riding in those seats.

I never rode a school bus. I was of a generation that walked five or more miles to school, so perhaps I have a different view of a school bus. Nevertheless, I respect the buses, the drivers, and the riders.

There are those headed for their very first day, then there are those who have ridden that bus for nearly 12 years. I do not mind waiting behind the bus when it loads or unloads. I do not mind giving that vehicle the right of way. Those are the people who will be driving more than a school bus in the future, to the benefit of all of us.

SCHOOLS OF THE LOWER KEY PENINSULA

First Lakebay School was in a log cabin in 1878. Sara Creyiston was the first teacher. The second school was District #17, and the third school was located where the Lakebay Community Church now stands. The fourth school, #315, was built in 1926 out of brick. It now houses the Senior Citizens Activities Center.

Continued on Page 5



STARTING SEPT. 17th
FALL CLASSES

**VAUGHN
COMMUNITY
PRE-SCHOOL**

"GROWING EXPERIENCE"

For 4-5 Yrs. Old

FOR MORE INFORMATION

884-3167

AT THE KEY PENINSULA
CIVIC CENTER



884-2008
377-8141



MOSTLY BOOKS

Gig Harbor

**Convenient Source
For Back-To-School**

References:
Dictionaries, Atlases,
Thesauruses

On the waterfront
¼ block from blinker.

852-3219

Continued From Page 5

SCHOOLS OF THE LOWER KEY PENINSULA
 Home's third school was built in either 1903 or 1910 and is now a historical site. George Allen was the first teacher in 1896.

Longbranch Fitiocy School #32 was built in the early 1900's. The second or third school was situated where the Longbranch Improvement Club is now.

The first Vaughn School was located in the Wright home in 1885, now the George Elliott home. Miss May Wilson was the first teacher (four months). The first school building to be erected was #94 and Cornelia Fletcher Hall was the teacher for the year 1885-1886.

The Vaughn High School was built in 1903. It is now the home of the Civic Center.

Evergreen School serves Lakebay, Longbranch and the Home areas. It was built in 1954.

Vaughn Elementary School was built about the same time as the Evergreen School.

Key Peninsula Middle School is the latest school to serve the above areas. It was built in 1981, and is located next to Volunteer Park.

Peninsula High School was built in 1948 to serve the entire Peninsula. It remained the only high school until 1979 when Gig Harbor High School was opened.



KP Seniors Entertained At Pt. Defiance

July 22 was the day for the second senior picnic of the summer of '85. The usual good food was enjoyed, along with barbecued hamburgers. Entertainment was provided by Bob Wickline and Wayne Shields of the Wickline Group from Fox Island. Their down-home foot-stompin' style was enjoyed by everyone. Passersby of all ages stopped to listen and tap their feet. It didn't take long for an impromptu dance to start to the rhythmic tones of the guitar and fiddle.

After singing and dancing the seniors settled down to cards and walks through the park. A lovely day!

The K.P. Seniors want everyone to know they are an active group, variously interested in the community, politics, arts and crafts, and anything

fun or serious. The regular Thursday pot-luck lunch may combine entertainment, a regular function such as foot care or blood pressure checks, good conversation and cards or games. In addition to the regular Thursday meetings, once a month a group goes to the horse races during the Long-ages season, and to the \$1.00 movies. Usually the club van is used for these events. Generally the group is varied enough to satisfy everyone's sense of fun and self-improvement. Goals are constantly changed and updated to suit the times and needs of members. The best part is that the club supports itself and its many charities by money-making activities so there are no dues!

REMEMBER!!!! The deadline for this paper is the 15th of each month!



The Garden Shoppe

Route 302 - Near 94th St.

Telephone 857-6716



FALL CLEANUP SALE

60 lb. Northrup King
 Fall/Winter
LAWN FERTILIZER

50% Off

(Reg. \$16.99)

NOW \$8.50

*BUCKLEY FRUIT TREES \$9.95

*BEAUTY BARK \$11.50 per yard

RHODODENDRONS

40% OFF

FREE W/PURCHASE

1 PACK JOBE'S

FERTILIZER SPIKES

LARGE SELECTION OF
 HANGING & UPRIGHT
 HOUSEPLANTS



CHARLES BOWLIN—OWNER



Born in May - Due in September NEW GRANDCHILD FOR THE WAGNERS

Gordon and Anne Pease are announcing the birth of Katherin Min Yeoung Pease, born May 25, 1985, BUT she won't be arriving until September!

Gordon and Anne are the daughter and son-in-law of Ed and Marian Wagner of Lakebay. Ed is pastor of Key Peninsula Lutheran Church. Son-in-law Gordon is pastor of a Lutheran Church in Spokane. Gordon and Anne applied to adopt through Lutheran Social Services a year ago. Even though Gordon is a pastor, he and Anne were still subjected to the usual background check. As time dragged on they real-

ized they were in for a long wait if they insisted on a traditional Anglo-Saxon adoption. When they were offered a chance to adopt a Korean infant through new channels opened up to the Services, they jumped at the chance.

Immigration procedures are holding up the works, but Katherine is expected to arrive at Sea-Tac in early September. Grandma and Grandpa are nearly busting with excitement!



Asayo Sakaki, Sapporo,
Hokaido, Japan
Lions Foster International

Good Will

As part of their program of fostering good will through international understanding, the Key Peninsula Lion Club is currently welcoming Miss Asayo

Sakaki, of Sapporo, Hokaido, Japan, to our area for a three-week visit.

Asayo, 19, is a sophomore at Hokkai Gakuen University, and is studying in the field of economics. After graduation from the university, she hopes to go into the sales field for interior decorating. Her father is a member of the Poplar Lions Club in Sapporo, and she has a brother and two sisters at home.

As an exchange student visitor, Asayo is staying at the Joe's Bayhome of Hugh and Janice McMillan, and from there she is being taken on various sight-seeing visits by members of the local Lions Club. Among many others, her visits have included the State Capitol in Olympia, a hike in the Olympic Mountains, the University of Washington, a logging operation, a sawmill, and a trip to Leavenworth. Shortly after her arrival here, she rode on the Lions Club float entry in the Pioneer Days Parade.

Beside being an excellent student with a deep concern for her educational work, Asayo participates in several sports, including swimming, skiing, tennis, bowling, and baseball. While going to college, she also works part-time in a seafood restaurant.

Asayo is only one of a group of approximately 20 Japanese young people who are participating in the Lions' exchange program in the Northwest at this time. Before coming to the United States for their three-week stay, the group spent three weeks in British Columbia, and will be returning to Japan together about the end of August.

Community House Fund Raiser Food Bank Needs Your Support

Sep. 3 - 6:00 p.m. - regular meeting at Community House. The public is welcome.

Sep. 21 - 10:00 a.m. - champagne brunch at Community House, \$5.00 per person.

General meetings are open to the public and are generally held on the first Monday of the month at 6:00 p.m.

A fund-raising champagne brunch will be held on September 21 at 10am. It will be catered by the Homeport Restaurant at a cost of \$5.00 per person. The Community House Board of Governors and its workers join in extending an invitation to everyone to come and see their new quarters located in the old Home schoolhouse building. They have worked long and hard to renovate this space into workable headquarters, so make time on the 21 to go and see their handiwork. There will also be a flea market, an art show and a china raffle on that day.

The Food Bank really needs your support and if everyone on the Key Peninsula donated just \$1.00 to this worthwhile cause, the goals of the Food Bank would be well on their way to being met. Remember, all your donations are tax-deductible.



GIG HARBOR NATIONAL BANK

MEMBER FDIC

SUMMER HOURS

LOBBY: 10:00 a.m. to 5:30 p.m., Mon. thru Thurs.
10:00 a.m. to 6:00 p.m., Friday
9:00 a.m. to 12:00 noon, Saturday

DRIVE IN: 8:00 a.m. to 6:00 p.m., Mon. thru Fri.
8:00 a.m. to 12:00 noon, Saturday

5001 Olympic Drive N.W. Gig Harbor, Washington (205)851-5641

WE CARE

Dee Dee Kerkes
 Beverly & Andy Pedersen
 Tim & Glenda Lemon
 Ken & Debbie Nichols
 Tony & Tammy Brentin
 Mr. & Mrs. Gaylen Potter
 Hugh & Janice McMillan
 Jim Penfield
 Paul Bosch
 Julie Hemstreet
 Vicki Henschel
 Raul Ancira
 Stan & Eleanor Rippon
 George & Marion Parrott
 Bob & Gloria Morgan
 Jim & Ruth Updike



Don & Shirl Olson
 Judy & Jack Laskowski
 Tom Ahlers
 Marty & Betty Pedersen
 Ken & Elizabeth Borslien
 Ruth & Ross McMenamin
 Gayle Arnzen
 Harry & Ellen Danielski
 Tony & Barbara Trotter
 Art & Carmon Fenton
 Ron Hill
 Ed Paine
 Shirley Marietta
 Medric & Marie Schwenka
 Duane & Margot Fleming
 Marguerite Bussard
 Mac & Billy McKinney
 Jean & Connie Gazabat
 Marg Holman

VOTE
 YES
E.M.S.
 AND
FIRE
 PROTECTION



SPONSORED BY: DISTRICT ADVISORY BOARD (D.A.B.)
 CHAIRMAN: Tony Tebeau, TREASURER: Avon Gay, Shirley
 Marietta, Joe Mercado, Henry Stock, Walt Schmidt, Don
 Mastro, Joyce Case

Horace & Anne Marie Kanno
 Brian Mark Hiller
 Karl & Gail Bonn
 Jim & Gayle Latteri
 Mike & Susan Pfeifer
 Fred & Mary Ramsdell
 John & Kathy Schmidt
 Dean Shriner
 Alan & Lily Taylor
 Jim Glass
 Richard & Patricia Olsen
 Puget Sound Limousine Service

Don & Karmen Whitfield
 Josephine & Manley Severson
 Pat & Phil Soreum
 Lorraine Nigro
 Ken & Helen Foutch
 Ann Marie Barbee
 Donna Gebo
 Rod & Gail Mitchell
 Mike & Fran Kent
 Linda & Daniel Ormme
 Richard Binion
 Lynne & Julie Johnson
 Dee & Dan Lamar
 Chuck & Phyllis Ross
 Robert Bosch
 Tom Lique



John & Sandy Robinson
 Sarah & Mike Misener
 Don & Cherie Mastro
 Kevin Dieckman
 Tony & Sue Tebeau
 Bryan Tebeau
 Avon & Wayne Gay
 Walt & Bertha Schmidt
 Joyce & Bill Case
 Henry & Eleanor Stock
 Bill & Evelyn Evans
 Joe Mercado
 Jerry Forrester
 Bryce & Alice Webster
 Karen Benoit
 Bud & Delores Uish
 Gary & Michael Anderson
 Bruce & Donna Daily
 Charles & Wanda June Bowlin



The Bridge

We had decided to vary our usual morning walk. What would it be like to hike across the Narrows during morning rush hour? Starting a half hour early for a Tacoma appointment, we parked in the little lot at the north end of the bridge, locked the car and started across.

For some reason I wanted to walk on the easterly side, which necessitated crossing traffic. Watching for a gap I took Margaret's hand and started across, which was nearly a fatal mistake. A car flying low almost wiped us out. Luckily the driver was too, he missed us. Scared the devil out of me though.

The first thing we noticed was that the bridge is uphill clear to the middle. The second was a feeling of awe at the solid steady strain on the bridge cables. Somehow the connecting cables between the bridge deck and the

main cables seem comparatively very small. Suppose one cable should fail? Would the adjacent cables snap in a sort of domino effect? Probably not.

There is a reason for such thoughts when you walk the bridge during rush hour. Our hand-in-hand, side-by-side walking mode quickly changed to Indian style as huge trucks nearly knocked one over with a blast of air. A good place to think about speed limits! We stayed close to the rail and hoped thousands of parts on hundreds of vehicles held together until we got back to land again.

In spite of its weight the bridge moves quite a bit. Closely spaced traffic or heavy trucks create a small wave as they roll along the surprisingly flexible roadway. Expansion joints move in response to the changes in loading. There is a clanking here and there. Are all those bolts and nuts tight? No doubt someone knows all about them. We hope so. Looking down we remember, in my case over 70 years ago, when we rode the old steamers through the Narrows. Swift cruisers draw long thin lines down there now. Fishermen drift and troll with many styles of boats, nearly all could outrun anything we knew as kids. Only tugboats, moving scows and logs, and an occasional freighter seem to fit our memories of the old days. Even most sightseeing boats are fast and sleek and sailboats have aluminum masts!

So we made our walk. Only to the middle, where the deck is level at least for a short distance, then back downhill and UNDER the end of the bridge in safety to our starting point. We will not do it again unless traffic slows down. That might be a long time.

Give your child an acceptable way to prove he is a man and he will not experiment with unacceptable ways.

Obituaries

Lorimer I. Langlow

Lorimer I. Langlow, a life-long resident of Tacoma and Home, died July 31, 1985. Mr. Langlow was a printer by trade and a member of the Printing Craftsmen of Tacoma. During his career he established two Tacoma printing companies. He was a World War I veteran, a member of the Knights of the Round Table, and a member, Key Peninsula Lutheran Church, Lakebay, where services were held.

Surviving are his wife, Ruth M., of the home, three daughters and a son, ten grandchildren and sixteen great-grandchildren.

Memorials are suggested to Key Peninsula Lutheran Church, 4213 Lackey Road, Lakebay, WA 98349.

China Palace RESTAURANT

NE 23320 HWY 3

275-4444

BELFAIR, WA

Sunday Brunch 10 a.m. - 2 p.m.

Not just an ordinary brunch but a Chinese American Brunch. The quality you would expect from China Palace, including traditional brunch favorites with new and innovative items. Special prices for seniors and children under 12.

RESERVATIONS RECOMMENDED FRI. & SAT.

Semi-Private Room For Family Parties or Banquets

HOURS:

11:30 a.m. to 10 p.m. — Tues. thru Thurs.

11:30 a.m. to 11 p.m. — Fri. & Sat.

12 Noon to 10 p.m. — Sundays

CLOSED MONDAYS



KEY WESTERN BUILDING CENTER

KEY CENTER 884-2311



BARGAIN OF THE MONTH

CORNING WARE®



9.88

While Supplies Last

5-Pc. Menu-ette Set includes both 1 and 1 1/2-pint pans and a 6 1/2-in. skillet, plus two covers that fit all three pieces. This versatile set goes from the freezer to the oven to the table. Great for storing leftovers, warming up & serving. Classic cornflower design. #1810075

QUANTITIES LIMITED

Durex Bender Board — 40 Ft. Roll

- *A composite
- *Bends in a tight radius without splitting
- *Will not rot, has no knot holes, splits or splinters

\$9.95 roll

Stakes for Durex Bender Board

Package of 10 **\$2.95**

Close-out on Cuprinol Stain

\$12.95 Gallon



HARDWARE VALUE OF THE MONTH



While Supplies Last

7.99

2,101-Pc. Nut & Bolt Center incl. nuts, bolts, cotter pins, washers and screws in 25 double-bin see-through drawers that slide out easily from the heavy-duty plastic cabinet. Safety stoppers on drawers prevent spillage. Keeps everything organized. #92101

QUANTITIES LIMITED

Roof Cement wet/dry surface

\$4.79 Gallon

Leak Plugger — Roof Cement

\$2.29 quart

Rug Samples — \$1.75 Ea.

**Restore-x Exterior Paint and
Weathered Wood Remover**

- *Easy to use, 1-gallon containers
- *Eliminates the need for scraping
- *Removes exterior paints & wood stains

K.C.

CORRAL

MOVIE MAGIC

KC CORRAL 884-3002



Movie Rentals

Monday - Thursday
\$2.00 - 1st movie
2 or more \$1.50 each
Friday - Saturday
\$2.95 - 1st movie
2 or more \$2.50 each
Non-Members Mon-Thurs \$2.95 ea. Fri & Sat \$3.95 ea



884-3304

TACOMA 272-6996

COLONY MLS

Real Estate Inc.

K. C. CORRAL, KEY CENTER LAND, HOMES FARMS, AND WATERFRONT

Call your local professional Realtor, who knows the values in your area and can help you with your Real Estate needs.

- Chuck Hayward 884-3864
- Joyce Tovey 884-3878
- Richard Raschle 884-3798
- Doris Maffei 884-3802
- Gary Anderson 884-2912

Collins Chiropractic Center

Dr. Collins is available 6 days a week
Key Center
Tues. & Thurs.

KC Corral
884-3040

Port Orchard

Mon., Wed., Fri., Sat.
2914 Mitchell Rd.
876-6888

2914 Mitchell Rd.



"I couldn't have done it without my credit union."

It's a moment she'll never forget, her first blue ribbon. And me? I wouldn't have missed it for the world. Remarkable how easy it was to get the money for Laurie's horse... after all there is no such thing as a blue book on quarter horses. But at my credit union, I'm what matters, not a blue book. And because of that both Laurie and I know what it feels like to be a winner.



TACOMA TELCO CREDIT UNION

Peninsula Branch, K.C. Corral Key Center, WA

884-9266

Mushroom Program

The story of mushrooms and where they grow will be presented in a slide commentary program at Key Center Library, Friday, September 27, 2-3 p.m.

Martha and Erik Edman, who will present the program, are charter members of the Kitsap County Mycological Society, members of the F67 Camera Club in Bremerton, and have belonged to the Photographic Society of America for 25 years. They have given nature programs throughout the West for many years. Their photography is said to be extraordinary.

The free event is sponsored by the Friends of Key Center Library. The public may bring mushrooms to be identified by the Edmans.

In The Library

A letter from Ruth Little:

Dear Dory:

It's been months since you asked me to write you a list of my favorite books -- books that had influenced my life most. Don't all books we read influence our lives?

There are so many! How can I select a mere six or eight? And they change as the years roll on; what was my favorite in high school (*Les Misérables*) seems hopelessly "wordy" now.

"The Piggerin' of Aunt Wilma" by James Thurber has remained my favorite short story over the years. I re-read

it about once a year and always get a good laugh. I'm partial to humorous stories.

Here are a few books that have meant a lot to me:

CIRCLE OF QUIET by Madeleine L'Engle is a very personal and probing story of one woman's journey into self-discovery.

PHILOSOPHY OF HUMANISM, a highly readable book by Dr. Corliss Lamont traces historical development, and presents this philosophy as a way of life for modern man.

HUMAN DESTINY by Leconte Du Noy is an inspiring book by a noted scientist that tells how man can retain his spiritual beliefs in today's confusing world.

HAN AND HIS GODS by Homer Smith is a very interesting and easily read book of man's struggle to grow and develop new ideas concerning the world about us.

LISTENING POINT by Sigurd F. Olson who has a keen sense and awareness of our awesome universe, and who thinks everyone has even if at times it needs to be rekindled. This is a beautiful book that everyone should read.

Warm Friendly Greetings,
Ruth Little

Library Hours:

Tuesday & Wednesday	1-8:30
Thursday & Friday	1-6
Saturday	12-4
Sunday & Monday	closed

Business News

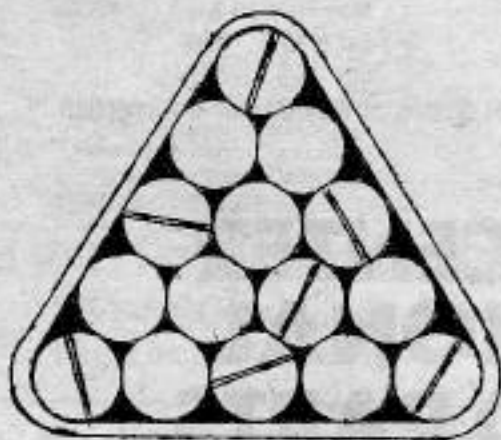
KEY CENTER ARCADE popped up in Key Center the other day. It is open from noon to midnight during the week, and from noon to two a.m. Saturday and Sunday. Owners are **RANDY AND LINDA HALLIDAY**.

New owners at **HOME GROCERY** are **GENE T. KIM**, his brother and sister-in-law and their parents; Gene will be the manager. The family also owns a store in Puyallup. Immediate plans include increasing the choice of fresh meats and produce.

The **CHEVRON STATION** at Home is owned by **CHET AND SUE DOUGHERTY**, residents of Lakebay for seven years. They've painted and remodeled, so if neat and clean gas stations impress you - drop by and say hello. Your editor was frankly amazed. Chet does car repairs part-time, and eventually plans to do welding and machine work. Sue and son, **CHESTER**, run the pumps and minor stuff like oil and windshield. You get really personal service with a smile and a chat to go with it...neat!

DIVINO'S RESTAURANT, owned by **LOUIS AND SANDEE DOMINGUEY** occupies the largest hand-crafted log building on the West Coast (between here and Mexico) and it's right here in Belfair. They've just opened an "adults only" dining room and lounge, and there is also a charming family dining room with fun decor and menus. There is a menu for restricted diets, too.

Hey Kids, Play Video Games and Pool



AT THE...

K.C. ARCADE

NEXT TO TAVERN, ACROSS FROM THE HUCKLEBERRY INN

Sunday-Thursday — 12 p.m.-12 a.m.
Friday & Saturday — 12 noon-2 a.m.

Everybody Gets A BARGAIN

at

NORTHERN FURNITURE

THE SECOND HAND FURNITURE STORE

Some of September's Bargains Include:

- 21 cu. ft. Upright Freezer \$150⁰⁰
- Westinghouse Self-Cleaning Range \$95⁰⁰
- Refrigerators, starting at \$50⁰⁰
- Apt. Size Gas Range \$40⁰⁰
- Black & White Packard Bell TV's \$20⁰⁰
- Like new, Queen Size Hide-a-bed \$250⁰⁰
- Coffee Tables & End Tables from \$25⁰⁰
- Table Lamps from \$10⁰⁰



Plus many, many, more household & misc. items.

See you at...

NORTHERN FURNITURE

KEY CENTER — ACROSS FROM FIRE STATION

MONDAY-SATURDAY 10 a.m.-6 p.m.

LICENSED • BONDED • 100% GUARANTEED



STAR CARPET CLEANING & DYEING CO.

By Our Method, We:

- *REMOVE FURNITURE
- *VACUUM
- *PRE-SPOT
- *SHAMPOO
- *RINSE/EXTRACT
- *RAKE CARPET
- *REPLACE FURNITURE

**FREE
DEODORIZER
TO FIRST 50
CUSTOMERS**

2 Rooms & Hall

Mon-Thurs. - 8:00 a.m.-9:00 p.m.
Fri. & Sat. - 9:00 a.m.-5:00 p.m.
PHONE: 851-9499
1-800-422-4071

\$34⁹⁵



NO MUSS • NO FUSS • NO BOTHER

FRAM FILTER MONTH

SEPTEMBER 1985



\$2.99

FRAM Oil Filter
PH8A, 13, 30, 43, 25, 2870A,
2856, 3387A

**FRAM
PH8A**
OIL FILTER

**FRAM
PH8A**
OIL FILTER



Mon-Fri 8:30-7
Sat 8:30-6
Sun 10-4

Located at Key Center Intersection

KEY CENTER NATIONAL AUTO PARTS

15605 92nd St
Lakebay

884-3307



AT YOUR PARTICIPATING
CAR CARE MAN

Macadamia Nut

School Daze....My son will not be in school today!! Who's this speaking? "My father"! "Happy birthday" to Liz and Lavetta of Herron Island and to Lakebay's Eve Fogel....Watch for the new column in the News geared to diet-ers, called "Dear Flabby"....Friendly and funny exchange of ideas going on between Burley Feed and the Fire Dept. regarding burning the Ban. Involves voice disguises and a scarecrow hostage in front of the store...only Kathi Worley and Pat Thomas can do it with humor and wit. A sign in the window read: NO HELP WANTED. As two men passed by, one said to the other, "You should apply - you'd be great"....Good deliverance of support by those who worked at, and those who attended, the feed at the Longbranch Improvement Club for the Longbranch Mercantile...Dis-honorable Mention to those responsible for the evil-doing in that area.... Brotherhood needs no publicity, but all the other hoods should be made public....What did we get in the mail? Answer: "two pay-me's, three give-me's and three buy-me's"....Kudos to Bonnie Eads for her work in the Pioneer Days Parade...a short parade that went a long ways in promoting community spirit....The Key Peninsula Health Center has the spirit...they are truly concerned with the community's health and problems. ADD-LIBS--"This Church Built by God", written below was: "Electrical work by Paine"...."Where's your parents?"...."They was in but they is out now"...."Hey, where's your gram-mar?"...."In the kitchen making some cookies"....If life begins at 40, what ended at 39?

And how was your \$%cc&****#month?

Because of decision difficulties an extra year has been granted to fur-ther refine wording and classifica-tions of land use. Date for enact-ment is tentatively set for May, 1986. A Pierce County Zoning Ordinance has been under consideration for sev-eral years. Public input has been collected in the form of questionnaires and public meetings. The Key Penin-sula Advisory Board (CAB) has met with residents and Pierce County Planning Commission many times to transmit lo-cal opinions of desired directions of growth and development. As a result of professional research and public commentary, the Growth Management Ad-visory Task Force has assembled and printed a thick volume spelling out in detail each item of the proposed Zon-ing Ordinance. A large map of Key Peninsula indicating present usage ac-companies the publication, which is av-ailable to the public from the Planning Office in Tacoma.

Stated objectives of the ordin-ance are (1) to guide future growth and development through adoption of controls and standards; (2) to protect land resources from "intrusion of in-compatible uses"; (3) to provide ap-propriate living areas in a wide range of population densities; (4) to pre-vent overcrowding; (5) to ensure con-servation of water and preserve the purity of aquifers; (6) to ensure ad-equate space for agriculture and com-merce; (7) to provide for parks and recreational facilities; (8) to pro-protect property rights and values; (9) to ensure public safety and other con-siderations necessary to maintain qual-ity of life for the residents of Pierce County.

Residents generally agree that planning for future growth is essen-tial but consensus on use classifica-tions, lot sizes, controls on popula-tion growth and commercial develop-ment, does not exist.

Continued on Page 14



ROOF & GUTTER CLEANING
Moss Removal & Prevention
Jerry Frost
858-6960

SAY
Chevron "FILL 'ER UP"
AND
SAVE
5¢ PER GALLON

**CASH
COMMUTER
SPECIAL**

DISCOUNT ON FILL-UPS ONLY
MONDAY THRU FRIDAY
EXPIRES SEPT. 30

**CHET'S
LAKEBAY
CHEVRON**




Gazebo Gardens
851-4800 • Purdy
The Local Authority



We Keep Rollin' A "Lawn"

SOD
17' Sq. Ft.
500 sq. ft. min. order
Delivered to your home



**LANDSCAPING
CONTRACTING & CONSULTATION**

BARK \$11.50 cu. yd.
(medium fine fir/hemlock mix)



Theresa Dukes
Washington
Certified
Nurseryman



14701 State Highway 16 - Purdy
9-5:30 Mon.-Sat. 9-4:00 Sunday

**STATE FARM
Family Insurance
Checkup**

Don Gill

4821 Pt. Fosdick Cr. N.W.
Gig Harbor, WA

851-6171

Like a good neighbor, State Farm is there.
State Farm Insurance Companies
Home Offices: Bloomington, Illinois



Continued From Page 13

CAB POZ

One hotly contested section is Performance Overlay Zone (POZ). It has become so controversial that its opponents have held special meetings and even printed tee shirts with symbols opposing the POZ. Its intent is to provide a higher level of review for uses of certain areas in order to make flexibility within the development process. For instance, owners of growing professional or commercial areas could request permits to expand beyond originally set boundaries as the need for services grew. Opponents feel it does not provide enough flexibility and would inhibit growth.

Walter Schmidt of Walt's Fine Foods in Key Center has expressed concern that the Land Use Plan is proceeding too rapidly trying to solve problems with a "quick fix" that have been developing over many years. His major objection is that the commercial areas are inadequate in number and size to provide services for the growing population. He states that Highway 302 and Key Peninsula Highway South should be prevented from becoming a "string town" by allowing for the development of larger and more complete business centers. Walt also objects to the inadequacy of the Key Peninsula Land Use Map which shows present land-use patterns but not the proposed changes.

Don Mastro of DJ's Tire Company

feels that the Peninsula CAB does not adequately represent local needs in that its members are not gainfully employed or in business on the Key Peninsula. At least two more commercial centers will be required in the near future because Key Center has about reached its size limit due to topography, water resources and drainage problems. He expressed the opinion that his business near Minter, and close-by Macon Bacon, should be zoned commercial so that a business center could grow there. The Elgin-Clifton Road and Highway 302 intersection also presents a favorable area for a shopping center. The Brook Restaurant, Veterinary and Charbonneau Building Materials area has been zoned commercial but development on the north side of the road must necessarily be limited as it borders on the Minter Creek sensitive area. Minter and its tributaries must not be polluted as the fish hatchery downstream depends upon the purity of the water.

Mr. Mastro considers the proposed two acres for commercial establishments inadequate. It is so small as to prohibit one owner from establishing a shopping center to accommodate the services that residents really require. Spreading of commercial establishments along the highway can be avoided by clustering shopping and services for convenience and conservation of energy.


Mike Salatino, on the other hand, views the proposed zoning ordinance

as unnecessary controls to be placed by county bureaucrats on Peninsula residents and businesses before the directions of growth are known. "Zoning effectively eliminates the free market by artificial predetermination of residential and commercial patterns of growth". The approximately one million dollars that has been spent by the Planning Commission should instead have been spent on roads and improvements to serve present needs. If an area becomes impacted then government should respond with assistance.

Marie Brown of Home expresses the concerns of many retired persons when she says, "Keep population density low; retain the rural character of our Peninsula". She would like to see no additional commercial development, condominiums, apartments, or multi-family homes south of Key Center. "They are incompatible with the lifestyle retirees have come to the Peninsula to enjoy. Individual homeowners do not alter the area as much as real estate developments". She opposes the growth of additional shopping centers as unnecessary and inadvisable. For those who no longer drive, there is a weekly van to transport older persons to shop and bank in Gig Harbor. Pierce County Transit buses run a regular schedule from Key Center to Tacoma and it is hoped that they will soon extend their route to include Home and Longbranch.

Continued on Page 18

**THE
KEY PENINSULA LIONS' CLUB**



sponsors
the
WORLD FAMOUS

SNOQUALMIE FALLS LODGE

FAMILY FARM PANCAKE BREAKFAST

AT THE LONGBRANCH IMPROVEMENT CLUB

ON SUNDAY SEPTEMBER 8TH
(WHICH IS GRANDPARENTS' DAY)
FROM 9:00 am - 1:00 pm

ADULTS:	\$3.75
STUDENTS/SR'S:	\$2.75
UNDER 5:	FREE

**ALL YOU CAN EAT!
CONTINUING RAFFLE**

The Country Mouse

15916 84th St. KPN Lakebay, Wa. 98349

TIME FOR CLASS.


PAINTING WORKSHOPS	Sept. 4 and 11	Afternoon
TOLE PAINTING (Oil)	Sept. 19	Morn.*
TOLE PAINTING (Acrylic)	Sept. 17	Eves.*
TOLE PAINTING (Acrylic)	Sept. 19	Eves.*
WALL STENCILING	Sept. 23	
THEOREM PAINTING	Sept. 20	Morning or Evening
ADV. THEOREM	Oct. 7	
REVERSE (Glass) PAINTING	Oct. 2 and 9	Eves.
PADDED PHOTO ALBUM	Oct. 21	
STUMPKINS (Soft Sculpture)	Nov. 4	Morn. or Eves.
PAPER ROSES	Nov. 18	Morn. or Eves.

FOR INFORMATION,
RESERVATIONS
CALL:

884-2662

10 a.m.-6 p.m.
Tues. through Sat.

*In the red barn
1.2 mi. south of
Key Center*



*WEEKLY

BURLEY FEED & FARM SUPPLY

**Key Center
884-4356**

4th Annual FREE Chili Feed

Sept. 14th & 15th

Sat. 8:30-6:00—Sun. 10:00-6:00

Our Way of Saying *"Thank You"* to All
of our Customers and Friends.

In-Store Bargains Galore



GRAND OPENING OF THE NEW STORE

"TACK CENTER"

Located Below Burley Feed



**OPEN 7 DAYS A WEEK
AND ALL BUT 4 HOLIDAYS.**



**WE HAVE FROZEN FOOD LOCKERS AVAILABLE.
WE DELIVER**



Pioneer Days



Sally Cornman, Lions Citizen of the Year, Bill Smitherman and Linda Thomas, State Representatives and Mike Salatino were this years dignitaries.



Henry and Eleanor Stock, last year's Pioneer Days chairpersons graced the parade as this years Grand Marshalls. Congradulations H & E, you deserved the honor.



Bonnie Eads, Parade Chairperson, is surrounded by (top left, clockwise) Lauretta and Ed Jaggi, Logging Competition Co-chairpersons, Mary Seidelman, Food Concession Chairperson, Rhys Woods, Dinner Chairman, Sue Chamblee, Ticket Chairperson, Jim Fassler, Raffle Chairman, Shirley Olson, Dance Chairperson, not pictured Jan McMillan, Publicity Chairman, Denise Backland, Publicity Chairperson, Kathi Worley, Clean-up Chairperson and last but definitely not least is Vikki Henschel General Chairperson.

PIONEER DAYS



As always, the children steal the day. Pictured at some of the activities and competitions they are intent at their chosen participation. Who won the events? I'll bet the nother of the biggest bubble knows!



A farm petting zoo, a hay search, fishing, sack races, foot races and bubble gum blowing championships were the order of the day in the children's department. Some participated in the scarecrow contest run by Kathi Worley of Burley Feed.



PIONEER DAYS



Brian Nichols, (left) KPCC Manager, takes gleeful aim at Vikki Henschel, Pioneer Days boss. It only happens once a year Bri, so enjoy while you can!



Bonnie Eads (right) Parade Chairman, lines up the entry from China Palace in Belfair. Mike supports our efforts every year with the Kai Loon Lion Dancers from Seattle and a big ad in the paper. Thanks Mike and thanks Bonnie for a great parade.



The Backland Family competes in the Scarecrow Contest. They were picture perfect in their wonderful outfits. Denise was the Button Chairperson for this event.

Rhys Woods (right) swaps yarns with a Lion helper in the kitchen prior to the big roast beef dinner. Rhys says hes not going to do it next year folks - anyone want to top that act?



Larry Nadeau and Dick Lawson were captured on camera for eternity as they won the competition. Larry sponsored the event.



Kathi Worley and her clean-up crew pose by an empty trash barrel. No doubt they are hoping that people will use it and minimize their job. It was another job well done. Kudos to Kathi and crew!



The logging competition drew a big crowd as usual. Thanks to the Jaggi family for sponsoring this event. It gets bigger every year and is lots of fun for us non-loggers to watch and ooh and aah about. Amazing skills and feats of strength were displayed by these woods experts. Who won the events? Maybe we'll have a list for the next issue. We know Rhys Woods won the hard-hat award. Congrats Rhys, You were well chosen.

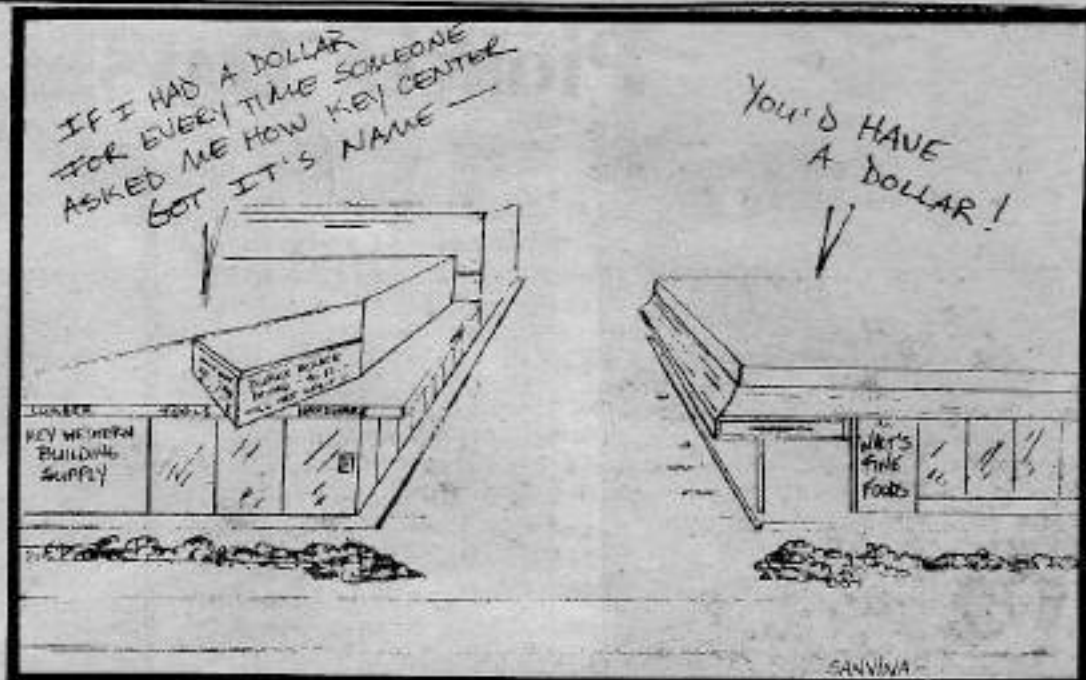


Continued From Page 14

CAB-POZ

Mrs. Brown worries, as many other residents do, when she sees large sections of forests stripped of trees to the edge of the highway. Several recent examples of "denuding the land and running" have occurred on plots near Home. She feels there should be a clause in real estate contracts that acreage cannot be clear-cut before one-half or two-thirds has been paid on the contract. Local "watch dogs" often report infractions of land use and the Pierce County Health Department permit system. These reports do not elicit a quick response and by the time the authorities get there, the damage has been done. This happened recently with a land development scheme in Delano.

Our Peninsula has a diverse and growing population. It is a "bedroom community" for some young families, the site of many a second or recreational home and the chosen retirement community for numerous seniors. The needs and desires of the majority must be met. Land use decisions are complex. Some refining is obviously necessary but Director Larry Frazier and his team are to be commended for a professional, detailed proposal to allow for orderly future growth. Methods for alteration by review have been built-in to allow for changes as they are needed.



Aerobics Start

Fall classes will start on September 9. Regular classes begin at 9:00 in the morning and modified at 10:15. Evening classes start Thursday September 12, at 7:00 p.m. The classes run for 6 weeks.

Morning aerobics are every Monday, Wednesday and Friday and evening classes are Tuesdays and Thursdays. Day classes are \$30.00 and evening are \$25.00. There is babysitting available for a nominal fee.

For further information call Vikki at 884-3642.

MANY THANKS TO THE SENIORS THAT HELPED CARRY THE VERY HEAVY PAPER STAND FROM THE BASEMENT TO THE NEWS OFFICE Ed.

MASTER SHARPENING

10% off

23002 Silverbow Road, Gig Harbor, WA 98335

ALL SHARPENING

WITH THIS AD

884-2877



CAMPBELL CHIROPRACTIC CLINIC

5110 LACKEY RD. KPN, VAUGHN

OPEN 7 DAYS A WEEK

24-HOUR EMERGENCY SERVICE

8 a.m. to 8 p.m. by Appointment

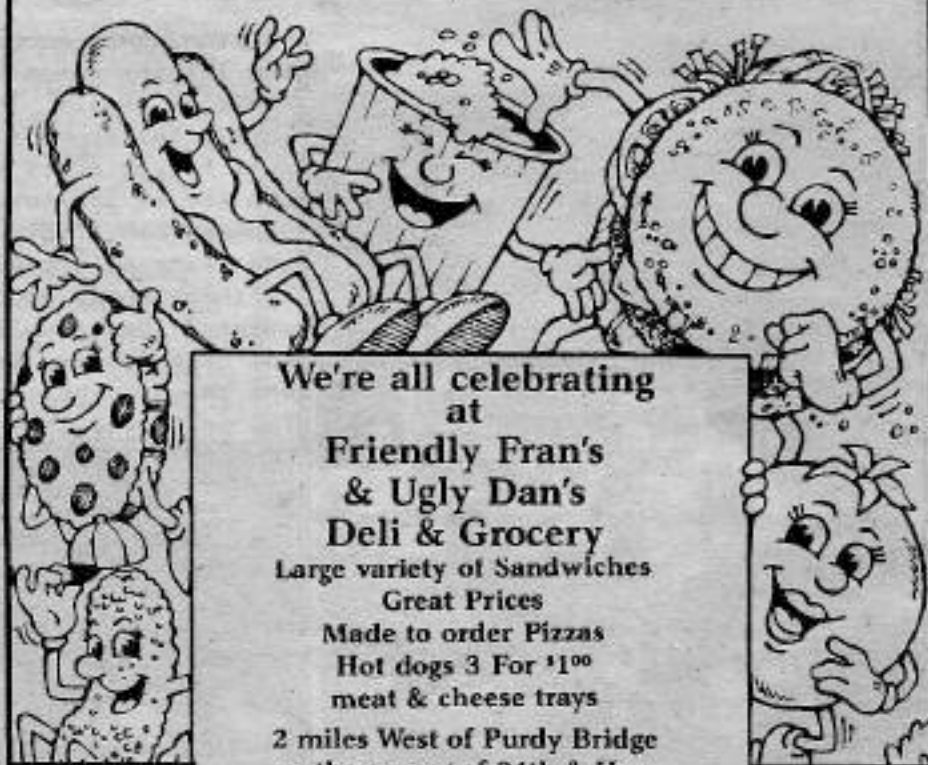
CALL 884-2144 - TODAY

Make September the month you finally find out why you have those nagging aches and pains, and together let's eliminate the cause! Don't just settle for temporary relief, health comes from within — **NOT FROM A BOTTLE!**

CALL TODAY FOR A FREE EXAMINATION!

FRIENDLY FRAN'S and UGLY DAN'S

DELI & GROCERY



We're all celebrating at Friendly Fran's & Ugly Dan's Deli & Grocery. Large variety of Sandwiches. Great Prices. Made to order Pizzas. Hot dogs 3 For \$1.00 meat & cheese trays.

2 miles West of Purdy Bridge on the corner of 94th & Hwy 302

at Horseshoe Lake turn.

857-7167

857-7167

*ICE *POP *SANDWICHES *BEER, WINE *CHIPS *SALADS

GET A GOOD HEAD START... FALL IS FOR PLANTING & SAVING



Plan and plant ahead now for springtime beauty. Fall planting insures strong roots and healthier growth. Plus, it's pleasant to plant during the cooler Fall weather. Take advantage of Fall. Plant trees, shrubs, bulbs and lawns now.

25% OFF

•FRUIT TREES•

Over 400 in stock

•SHADE & ORNAMENTALS•

Choose from 40 different varieties

•RHODODENDRONS•

Many hard to find varieties.

•SHRUBS—Evergreen & Flowering



ALL NURSERY STOCK

SEPT. 1st-SEPT. 15th

Applies to Stock On Hand. This is prime nursery stock, one of the biggest and best selections in the area. (Plus daily "In-Store Specials.")

NOTE: WE HAVE A NEW NAME • NEW BUILDING • NEW ENTRANCE, ACROSS FROM WALT'S FINE FOODS.

COUPON

ROSES

Jackson & Perkins Redi-to-Plant Boxes

\$300 EACH

LARGE SELECTION WITH COUPON Exp. 9/15/85

SEPTEMBER CHECK LIST

- Shop for bulbs—spring blooming bulbs available in September for fall planting. Shop early for best selection.
- Overseed old lawns, start new ones. The soil is warm and an excellent time for the seed to germinate. Check with your local nursery for proper instructions and care.
- Shear heaths and heathers. Cut back with hedge shears or a string trimmer after flowering. If you wait, you'll take off next year's flower buds at the same time.
- Clean up greenhouse. With mild solution of bleach and water wash down tables, pots and flats. Caulk, weatherstrip and add winter insulation.
- Spray for canker, anthracnose. Spray diseased dogwoods and fruit trees with bordeaux mixture in late Sept. to keep the disease from over wintering, also clean up all leaves and branches under the trees and prune out all diseased branches.
- Sow seeds of perennials, wildflowers and annual flowers for bloom next spring.

COUPON

BASKETS

Come in and see the new shipment present coupon and receive

15% OFF

Exp. 9/15/85



COUPON

- CLAY POTS•
- BIRD BATHS•
- CEDAR PLANTERS•

With Coupon

30% OFF

STOCK UP NOW

Exp. 9/15/85



COUPON

It's Holland Bulb Planting Time

Crocuses, Daffodils, Hyacinths, Tulips, plus others

Present this coupon and receive

10% OFF

Your Bulb Purchase Exp. 9/15/85



SUNNYCREST

NURSERY & FLORAL



OPEN EVERY DAY

MON.-SAT.: 10:00 a.m.-5:30 p.m.
SUNDAY: 11:00 a.m.-4:00 p.m.

884-3937

KEY CENTER



*Formerly Sakura Nursery • Just a new name — but same owners and same great service!

The Olde Glencove Hotel

Local Landmark Renews Past

The Old Glencove Hotel was built in 1896 as a resort facility for the steamboat trade; the popularity of automobiles then made overnight stays unnecessary, so operation ceased in 1930, and until 1981 it was used as a private residence. Descendants of the Nicholas Petersons, the original owners, still live on either side of the hotel property.

It was purchased as a private residence 11 years ago by Larry and Luciann Nadeau. It had always received loving care, but age had taken its toll. The Nadeaus first started to restore the main house, enlarging the deck across the front, scraping faded wallpaper off the walls and doing all the usual things one does to an old place. They also started the arduous process of getting the place registered as an historic site. This was finally accomplished in 1978, but contrary to public thought - it does not qualify the owner for any public funds. All monies for the ongoing restoration have come out of the Nadeaus' own pocket.

About three-and-a-half years ago the Nadeaus decided to try renting out a couple of the bedrooms since their family was raised and they had so much extra space. Collecting appropriate antiques has been no small part of the restoration, and each bedroom has complete antique matching bedroom sets, oriental carpets, lace curtains and various collector items.



The Olde Glencove Hotel

My favorite bedroom features a huge sleigh bed with matching furniture made of beautiful exotic woods. The success of their decision to rent next led to restoring an out-building, which now has two suites with private baths.

The Old Glencove Hotel is also rented for weddings and receptions. Luciann organizes the entire affair for her client, from the preacher to

the honeymoon suite. It is becoming well-known for its activities, and although many guests and clients are from this area, many others come from as far away as Hawaii and the mid-west. Overnight guests also enjoy a gourmet breakfast that rivals the famous breakfasts of Holland. The Old Glencove Hotel is an asset to the community.

LAKEBAY ROOFING

SERVING

PIERCE, KITSAP, KING & MASON COUNTIES

RESIDENTIAL
RE-ROOFING
NEW CONSTRUCTION
REMODELING

**24-Hour
Emergency
Service**

SHAKE • HOT MOP • TILE
COMPOSITION • CEDAR SHINGLES

**FREE ESTIMATES
884-2186**

TOM ROLFZEN — Owner
WN. ST. CONSTR. REG. LAKE BR* 157KF

Wheels of Life Bike-Walk- or Jog-A-Thon

St. Jude's Cancer Fund Benefit

Saturday, Sep. 14, 9-11 a.m. the Peninsula will hold its own version of the Wheels-for-Life Bike-a-Thon, a cancer treatment and research money-raiser for St. Jude's Hospital for Children. This year the participation will be expanded to include biking, walking, or jogging. Starting point is A Street in Home.

Marie Brown, 1606 A Street, Home, is the event's coordinator, and may be contacted at 884-4859 for more details.

Remember! Saturday, Sep. 14, 9-11 a.m. - A Street, Home. Come on out and help this cancer fund founded by Danny Thomas, and have some fun in the process.

WETZEL'S RECYCLING

- **BIG BUCKS!!**
- We'll meet or beat any price.
- Sign up for our September DRAWING
- 16511 84th KPN
- Hours: •••••
- Open: 11am-5pm
- Tues. - Sat. **884-4172**

DAR Announces Constitution Week

Constitution Week, September 17 through 23, commemorates the one hundred ninety-eighth anniversary of the Constitutions of the United States. As the oldest constitution still in active use in the world today, it is the basic document of the United States government, a government which protects the individual liberties of its citizens. The Daughters of the American Revolution urge all Americans to be worthy of its protection. Study your Constitution.

Make good use of our local library -- there's food for thought there, and it may help you with your diet!

COUPON

CHIP'S CRAB POT
Hwy. 16, Purdy
851-4611

10% Off Any Seafood
With Coupon Exp. 9/30/85

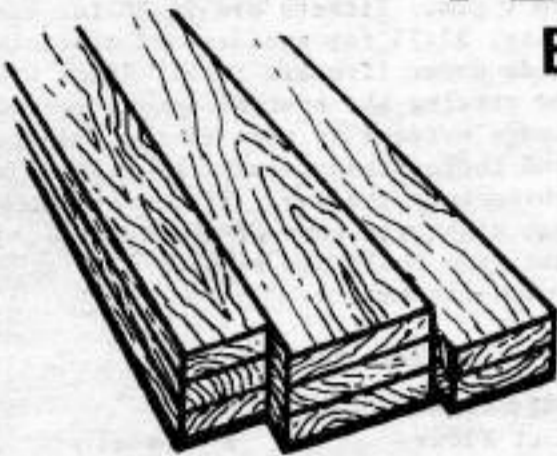
COUPON

LAKEBAY LUMBER SUPPLY

(Distributors of Old Growth Douglas-Fir)

PLAN SERVICE AVAILABLE

Bring Your House Plans To Us.

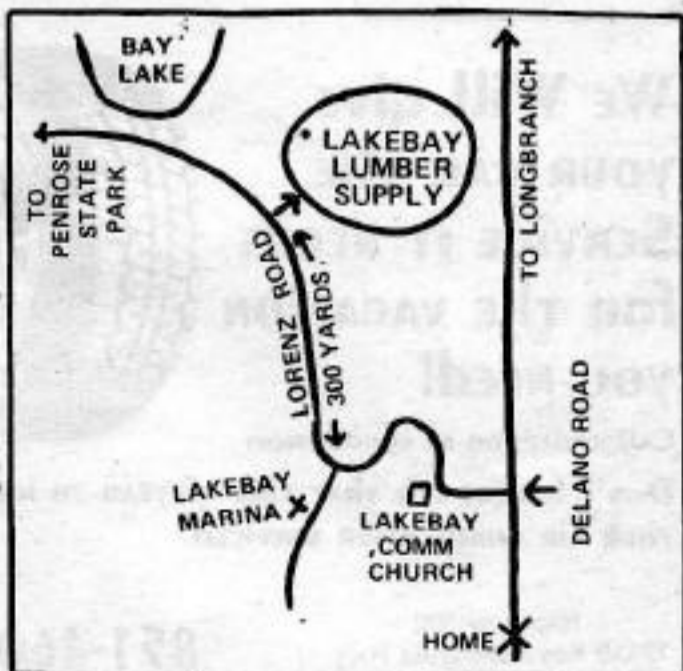


SEPTEMBER

SPECIALS

- *2x4 TK Cedar (Old Stock) \$.23 per lin. ft.
- *4'x8'x3/8" T-1-11 Shop Siding \$690 ea.
- *4" Cedar Bender Board \$.08 per lin. ft.
- *CWF Clear Stain (5 gal. cans) \$7200 ea.
- *6 lb. Splitting Mauls \$1490 ea.
- *8' 4x12 Douglas Fir -2 & Btr. \$100 per lin. ft.
- *12' 2x4 Utility Douglas Fir \$176 ea.

ALL SALE ITEMS CASH & CARRY * LIMITED TO STOCK ON HAND.

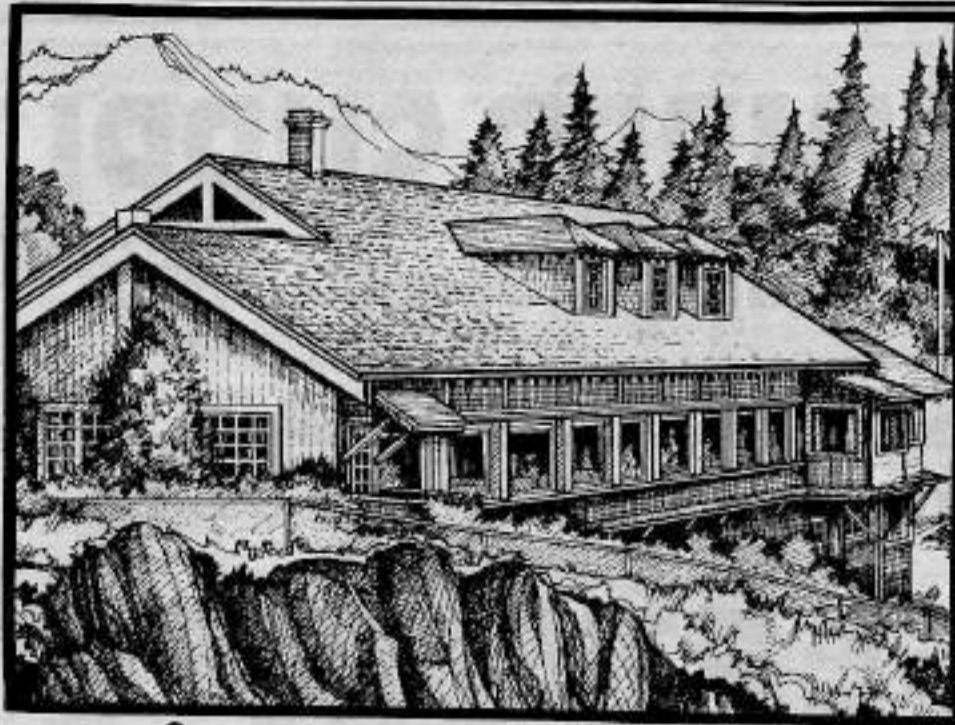


OPEN 7 DAYS A WEEK

884-9211

884-9212

522 Delano Road
Lakebay, WA 98349



**Snoqualmie Falls Lodge Breakfast
Lions Sponsor Event**

A Snoqualmie Falls Lodge Breakfast! Almost all Peninsula residents have heard of the world-famous resort breakfast, and many have made the trip to the beautiful lodge on the Snoqualmie River for a wonderful meal.

It will be a very special event, then, when on Sunday morning, September 8, the Snoqualmie Lodge, in conjunction with the Key Peninsula Lions Club, will be putting on their Family Farm Pancake Breakfast at the Longbranch Improvement Center, starting at 9 a.m.

The breakfast will feature all of the good things that are so well known; the fruits, the juices, the oatmeal, the biscuits and honey, the meats, pancakes, and all the rest, on an all-you-can-eat basis. There will also be gifts and prizes, featuring the various foods that are being ser-

ved at the breakfast, and which are now available in selected stores in our area.

A portion of the proceeds from the breakfast will go to the Lions Club, and will be used in their programs of assisting local persons handicapped through the loss of either vision or hearing faculties. Tickets are available now from Lions Club members for only \$3.75 for adults and \$2.75 for children, under 5 free, and the tickets will also be available at the door.

For those new to the area, the Longbranch Improvement Center is located on the Key Peninsula Highway about one mile north of the Longbranch Store and Marina, or about three miles south of the Post Office and Home bridge at Home.

At Home On The Range

By Janice McMillan

A bag of Snoqualmie Falls Lodge "Oatmeal Dream" cookies and the recipe was given me by a member of their staff and I can say without qualification that they are wonderful cookies.

Key Peninsula Lions Club is sponsoring the world-famous "Snoqualmie Falls Lodge Breakfast" at the Longbranch Improvement Club on Sep. 8 from 9 a.m. to 1 p.m. Tickets are \$3.75 for adults, \$2.75 for seniors and students, kids under five are free. Lions will be serving the special Snoqualmie Falls Lodge oatmeal as part of the breakfast, and Lodge products will be raffled off throughout the day. If you are lucky you might win some of the oatmeal. If not, you could use regular old-fashioned oatmeal.

OATMEAL DREAM COOKIES

Sift together:

- 2 c. flour
- 1 t. soda
- 1/2 t. baking powder
- 1/2 t. salt
- 1 T. cinnamon

Cream together:

- 1 c. shortening
- 2 eggs
- 3/4 c. sugar
- 1 1/2 t. vanilla
- 1 c. brown sugar

Mix above ingredients together, add 3 c. oatmeal and 1 c. raisins. Bake at 350° for about 8 minutes.

Additional directions from Jan: Cream shortening, gradually add the sugars, beat in eggs one at a time until fluffy, add vanilla. Stir in sifted ingredients, then stir in oatmeal and raisins. Drop by rounded spoonsful onto ungreased cookie sheet 2 inches apart. Bake about 8 min. until lightly brown.

**Continuous Pre-Painted
Aluminum Gutters & Downspouts**

- Residential
- Commercial
- Mobile Homes

\$1.39
Per Ft.
Installed



OLYMPIC GUTTER CO.

275-5557

P.O. Box 134 Call Now For Free Estimate Allyn, WA



**LAKEBAY
WOODWORKS**

- Custom Home Building
- Additions and Remodeling
- Imaginative Design
- Quality Service

BUILDING ON A REPUTATION OF QUALITY WORKMANSHIP
IN WOODWORKING AND CONSTRUCTION SINCE 1979.

John Carlson - Owner

884-3149

LAKEBW* 196JO



**COMPLETE CAR CARE
AND
TIRE SERVICE**

**We Will give
YOUR CAR THE
SERVICE IT NEEDS
FOR THE VACATION
YOU NEED!**

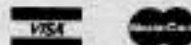


Call today for an appointment

**DON'T FORGET IT'S THAT TIME OF YEAR TO HAVE
YOUR AIR CONDITIONER SERVICED.**

Highway 302
12119 Key Peninsula Hwy.
Gig Harbor, WA 98335

851-4606



OPEN: 8 a.m.-5:30 p.m. Mon.-Fri.
9 a.m.-4 p.m. Saturday

Restaurant Guide

by Janice McMillan

The China Palace at Belfair now serves a special Sunday brunch from 10 a.m. to 2 p.m. Five of us tried to sample everything and, from a 28-year-old "sophisticated palate" to a 78-year-old "meat and potatoes type", all were pleased.

At a cost of \$5.75 for adults (\$4.75 for over-60's), \$3.75 for kids 6-11, and 75c per year of age for children under 6, this brunch is a super bargain.

It features Chinese and American dishes which make for a happy combination. The menu includes your choice of fruit juice, several kinds of fresh fruit (we had melons, strawberries and grapes) and about ten varieties of fresh and delicious-looking pastries. The American selection of hot dishes, presented at a long, help-yourself buffet table, included sausage, bacon, ham, hash browns and scrambled eggs. The Chinese dishes come straight from the kitchen and are delicious. We sampled egg rolls, egg foo yung, Cantonese-style scrambled eggs and steamed buns (Dim Sum). Our favorites were the Cantonese scrambled eggs with vegetables and barbecued pork and two kinds of Dim Sum. One was a large bread-like bun filled with barbecued pork and steamed. The other was a thin, glutinous wrapper filled with minced pork and vegetables and steamed. Both were very good and plentiful.

Brunch includes hot beverage, and for \$1.00 extra you can have as much champagne as you desire.

CONCLUSION: The China Palace is offering a great bargain, with food to suit all palates. The atmosphere is pleasing and the service without fault. It is highly recommended.

Health Center

By William F. Roes, M.D.

It's a sure sign of Fall when school starts and the influenza vaccine arrives at the Key Peninsula Health Center. We will receive our supply by September 16 and will begin our program then. This year the vaccine is to prevent the A Chile, A Philippine, and the B USSR strains of the influenza virus. We plan to supply the vaccine to the community until November, and recommend all people over 65 or those with chronic medical problems receive it.

Another activity coming up at the Center is the semi-annual blood drive. Possibly because of the recent AIDS scare, all the blood banks in the Puget Sound area are suffering from a decrease in the number of donors. This is unfortunate as we depend entirely upon volunteers to

supply our blood locally. Donating blood is 100% safe, no one has ever contracted AIDS (or any other disease) from donating blood and if you are in good health you may be the volunteer we're looking for. All blood donated is now screened for Hepatitis B, syphilis, and AIDS. The Health Department is providing screening for these diseases at no cost through their STD clinic, so the Blood Bank requests those people who think they may be infected to check with the Health Department instead of giving blood. Our drive at the Center will correspond with our annual Health Fair and open house on Oct. 12, but more on that next month.

Chiropractic Health Tips

By Dr. Robert Campbell

The term "occipital headache" refers to a type of recurrent headache usually described as a dull ache, soreness and occasionally sharp pain that begins at the base of the skull. The pain may radiate up over the back of the head along the sides to the temples. The patient is usually aware of a tender area on either side of the neck at the base of the skull. Occasionally, the patient who suffers recurrent occipital headaches also suffers transient dizziness. The pain may be increased or relieved by changes in the position of the head. The headache may awaken the patient at night and be relieved by simply changing position

of his head and neck. The headache may be present upon awakening and disappear after the patient is up and around. The recurrent occipital headache is nearly always caused by faulty alignment and mobility of the upper three or four vertebrae. Such faulty spinal mechanics may partially occlude a small nerve opening between vertebrae. Partially occluded nerve openings serve to compress and irritate the spinal nerves which exit the spine to supply the scalp and neck muscles. The patient may experience pain along the course of the injured nerves and sensations of tightness in muscles of the neck. This type is frequently associated with "tension headaches", "nervousness", shoulder and arm pain and occasionally with some types of vertigo or dizziness. Clinical evidence has shown Chiropractic care of faulty spinal mechanics to be the method of choice for correcting the cause of recurrent occipital headaches. The cause, not the symptom, has to be treated and corrected before you can get well and stay healthy. Once the cause is eliminated the symptom will disappear naturally with no outside interference. If you have a spinal problem, seek a spinal specialist. For further information, please call 884-2144.

A small town has been defined as a place where everyone is strong enough to tear up the telephone book.



ATLAS TIRE SALE



ALL-SEASON
RADIALS
SUPER WARRANTY
SEPT. 1-30

WE'RE OPEN:

MONDAY-FRIDAY
6 A.M.-7 P.M.
SATURDAY
8 A.M.-6 P.M.

WE HAVE:

BATTERIES, PROPANE
INNER TUBES, ACCESSORIES

Look For Our
**CASH COMMUTER
SPECIAL**
in this paper

WE DO:

AUTO MAINTENANCE
GAS & ELECTRIC WELDING
LIGHT MACHINE WORK
SMALL ENGINE REPAIR

884-3828

CHET'S LAKEBAY CHEVRON

1315 KPHN, LAKEBAY

CHET & SUE DOUGHERTY — NEW OWNERS

About Your Money

By David Barton

WHAT IS A ROLLOVER?

The term "rollover" is used in several ways in the financial community and therefore creates some confusion. In a broad sense, "rollover" means transferring one savings plan to another.

Here are some ways the term "rollover" can be used:

1. **INDIVIDUAL RETIREMENT ACCOUNTS (IRAs)** - Mr. and Mrs. Smith have an IRA with one bank and wish to obtain a higher interest rate by transferring their account to another bank or similar trustee. By filling out the appropriate forms they can have their current bank simply "transfer" the funds to the new trustee or, they can take possession of the funds for no more than sixty days and "rollover" those funds themselves to the new higher interest-paying account. This may be done only once per account in any 365-day period. This new account doesn't have to be the same investment as the original one. It can be spread out over a diversified group of investments which may include Certificates of Deposit, GNMA Certificates (U.S. Government guaranteed Treasury certificates), Mutual Funds, Money Market Accounts, and a host of other investments.

2. **PENSION PLANS** - Mr. Smith is retiring next month and is eligible for a pension. He has the choice of accepting monthly checks from his employer or receiving the entire value of the pension account as a lump sum. Because each monthly pension check would be taxable, and so would a lump sum distribution, Mr. Smith feels it would be better to pay taxes over a period of time on the monthly checks rather than paying taxes on an entire lump sum all in one year. One more choice he has is to "rollover" the entire lump sum to an IRA at a bank or other trustee where it would remain tax sheltered and where he may be able to get a higher interest rate. Then he may withdraw amounts according to his needs as determined by his financial plan. Oftentimes this is a more productive and flexible way to receive a pension because a diversified investment portfolio can be established and further "rollovers" are allowed.

If you have specific topics of interest that you would like me to cover in future "ABOUT YOUR MONEY" articles, you can call 857-5767 or send your suggestions to:

The Key Peninsula Newsletter
P.O. Box 3
Vaughn, WA 98395



For Pet's Sake

By Robert L. Ries, D.V.M.

Hand in hand with the advent of our warmer summer weather has come the annual battle with itchy skin in our pets. A number of different factors contribute to this problem. One of the most important is that, much like a person's nose and lungs, the skin of a dog or cat is its allergic organ. This means that virtually any allergy, be it to fleas, food, pollen, direct contact, etc., will manifest itself as itchy skin.

Far and away the most common cause for excessive scratching or biting in our climate is fleas. While the bites themselves result in some degree of itchiness, certain animals develop an allergy to the saliva that is injected during a flea's bite. After this, even an occasional fleabite can cause severe itchiness.

Solving the problem of itchy skin can be divided into two areas; recognizing the source and initiating a treatment program. This can be relatively simple in some instances, such as noting the presence of fleas and beginning a flea eradication regimen. More complex problems are often elusive to identify and as hard or harder to treat effectively. Examples of these are food and inhalant (pollen)

allergies. In many instances avoidance of the causative agent is nearly impossible, in which case medication is often given to help alleviate the itchiness. Fortunately, a fair percentage of scratching problems show a seasonal pattern, whether due to our annual flea season or blooming plants.

Surveys have shown that next to vaccinations, skin problems are the second most frequent reason for visiting a veterinarian. This tells us that skin problems are 1) very common, and 2) not always easy to solve. With proper care and treatment the pain and discomfort a pet is experiencing can be significantly reduced or eliminated.

Suggestions for future topics for this column are welcomed.

Our Friendly Caterpillar

By Margaret Paul

We must be kind to the proper kind of caterpillar, the larvae from the scarlet-pink Cinnabar moth, for these interesting creatures are infinitely valuable to us in helping to destroy the harmful tansy ragwort. This ragwort has taken hold over a great part of western Washington and is deadly to livestock. No antidote is now known for the toxin which destroys the animal's liver. Unfortunately, animals will eat ragwort when it's mixed with hay and its pungent odor is less noticeable. The Cinnabar larvae are easily distinguished from the more common caterpillar by their appearance, for, instead of the woolly Scottish yellow and black plaid, the "good guys", like the white-hatted cowboys in old westerns, wear a different outfit. Their bodies are smooth and evenly striped, black and pale yellow, in horizontal bands.

They are busy chomping away this summer on the dread ragwort doing all of us a great favor. Therefore we must be careful not to carelessly damage or kill those larvae, and instead be only grateful to them for their choice of salad! Tansy ragwort has been spreading to every corner of western Washington and is extremely difficult to eradicate, as every part of the plant must be destroyed. If the base or roots are left, or the plant is allowed to go to seed, our problem goes on. Bless the Cinnabar moth and his progeny -- may they go on forever!

DIVINO'S RESTAURANT

275-6121

In the Log Building — Belfair, WA

Watch Monday Night Football
on Big Screen TV
in Pleasant Surroundings.

Enjoy Your Favorite Cocktail
in our New Lounge
with the Round Bar.

Discover Our All New
Steak and Seafood Menu
in the Lounge

...follow the leaders in
Belfair



School Your Own at Home?



Home based instruction
service
CERTIFIED REFERENCES

851-4730

Golden Oldies Style

Show And Luncheon

Peninsula Lutheran Church

The ladies of Key Peninsula Lutheran Church are having a salad luncheon for members and friends on September 14 at 12 noon. The Tacoma Goodwill Industries will be presenting their Golden Oldies Fashion Show for the group. There will be a freewill offering for the Goodwill Industries. Tickets may be reserved by calling Eris Aasland, 884-4455, or Liz Frank, 884-2357.

Cootiettes Penn Ants

Next Month will be our Fall Crawl at Ellensburg Oct. 4 - check in, Oct. 5 - business meeting and banquet, Oct. 6 - Closing meeting. Grand Grayback Sue Dillenburg of Gig Harbor Seagulls will preside.

Sep. 10 - visit to Cottesmore and Rocky Bay with fruit and cookies. Plan to stay for craft work. Meet at Walt's 12:00 noon for car pool.

Sep. 19 - 7:30 p.m. Regular meeting in Gold Room at Civic Center.

Sep. 24 - Visit to Navy Hospital with refreshments. Meet at Walt's at 11:30 a.m. for car pool.

Chief Grayback Helen Wolniewicz would appreciate all members joining in the activities.

Be sure to make reservations for the Crawl at Holiday Inn, Ellensburg, before Sep. 18.

KPCC Bingo

Henry McCartin of Lakebay won \$500 recently. Congrats, Henry! Between \$700 and \$1000 is given away every Wednesday night, beginning at 7:00 p.m. and great snacks are provided by the Cootiettes. Thanks to new advertising, the crowds have nearly doubled. Come and have a fun time at Fun Night on Wednesdays!

Vaughn Community Pre-School

Vaughn Community Pre-School will open its doors Sep. 17 for the eighth activity-filled year.

The first day children will get acquainted with their teacher, Gail Mitchell, teacher-aide Marcy Reynolds classmates and surroundings.

Located at KPCC, the pre-school provides a growing experience and introduction to grade school for four- and five-year olds. Children are introduced to counting, letters, seasons, calendars, good nutrition and health habits, animal and insect life and community workers. They also participate in field trips.

Parents are not required to participate in the daily routine but are welcome any time they wish to become involved.

For more information call Gail Mitchell, 884-3167.

LAMA

The beauty of the changing season provides an excellent backdrop for the 3rd annual Autumn in Longbranch Arts and Music Festival, to be held Sunday, September 22, at the Longbranch Improvement Club. This free indoor/outdoor event, sponsored by the Longbranch Arts and Music Association (LAMA), begins at noon and ends at dusk. Fifty talented artisans from the Puget Sound area have been invited to exhibit and demonstrate their arts, from woodcarving and sculptural basketry, pottery, quilting, and wood-block prints, to fused glass and creative knitting, and much more. Headlining this year's musical attractions is Northwest favorite Little Bill and the Blue Notes, with Patty Allen. Also featured is the Vaughn Bay Jazz Ensemble playing contemporary jazz. Throughout the day, a variety of musical styles from folk to African will be heard.

On a whimsical note, the community is invited to design, fabricate and "Fly Your Own Flag" at the festival. Songs with familiar melodies and original lyrics about art, music and life on the Longbranch Peninsula are also being sought.

A special children's area and exotic food concessions will round out the creative atmosphere. In the

Continued on Page 28

Quality Photofinishing



COUPON

50% OFF

PROCESSING & PRINTING
135, 110, and 126 Color Print Film
LARGE 4" PRINTS STANDARD
NO EXTRA CHARGE

One roll per coupon • Expires 9/30/85 • Cash Value 1/20 of 1"



- * Personalized Service
- * Fresh Kodak Film in Stock
- * One Hour Service Available for 135, 110 & 126 Color Print Film

7878 KIMBALL DRIVE
GIG HARBOR, WA 98335

851-3582



OMC
Evinrude

Johnson

NOW IS THE TIME TO

WINTERIZE YOUR BOAT
And Save \$\$\$\$

SALTY BOATS

COMPLETE MAINTENANCE, SERVICE & REPAIR DEPT. FOR INBOARD, INBOARD/OUTBOARD & OUTBOARD MOTORS & DRIVES. FULL SERVICE FOR OMC, VOLVO, JOHNSON AND EVINRUDE MOTORS.

CALKINS TRAILERS

CLOSE OUT

ON 1985 JOHNSON OUTBOARD MOTORS

Open Mon. - Fri.: 8 a.m. to 6 p.m.
Sat.: 9 a.m. to 5 p.m.

1310 Commercial, Steilacoom, WA 98388

(206) 584-4177

Evergreen Elementary Parent Teacher News

First meeting of the school year for Evergreen Elementary Parent-Teachers Organization (Eagle Boosters) will be on Monday, September 9, 7 p.m. at Evergreen school. Parents, teachers and community members are welcome to attend. Childcare and refreshments will be provided. Evergreen welcomes new principal Dave Trochim, and several teachers new to this community. Newly-elected officers for the Eagle Boosters include: Jeannie Sagle, President; Gloria Wolslegel, Vice-president; Nancy Mercado, Secretary and Gary Giuntoli, Treasurer.

Agenda for this first meeting includes strengthening the partnership among parents, students, staff and community through planning of a calendar for the team-work needed to make Evergreen the best possible place for children to learn.

I leave my old magazines at the local laundromat. I know they are appreciated because the

Peninsula Social Club

The Peninsula Social Club will hold its first meeting of the 1985-86 season at 6:30 p.m. on Tuesday, September 10, in the general rooms of the Longbranch Church. According to President Stella Retherford, the program for the evening will include a discussion of a project to re-establish a salmon run in Home Creek, which enters Joe's Bay under the Home bridge. After the 6:30 potluck dinner, the program will be presented.

Everyone in the greater Peninsula area interested in area improvement and enjoying a pleasant social evening is welcome to the Peninsula Social Club. The present club was first constituted as the Good Roads Club for the Peninsula in 1908, and worked to that end until 1920. At that time, it was given its present name and it has met regularly through the years since then.

patrons become so interested in them that they take them home to finish reading them.

CC Board Biz

Avon Gay, Summer Fun Program Chairperson, presented Mike Salatino with a Certificate of Appreciation for support of the summer fun program. "The program has been a great success, thanks to the cooperation of the community", Avon said, "and next year it will be even better".

Bingo is really rolling since some new publicity was initiated, and \$700 to \$1000 is being turned loose weekly. A lucky Lakebay resident recently won the \$500 jackpot.

Vicki Henschel stated Pioneer Days plans were complete and thanked all her hard-working chairmen. Bonnie Eads reported that she had thirty-six entries for the parade - it grows each year! Rhys Wood's dinner plans were complete, and all he needed was appetites. Kathi Worley has lots of scarecrow entries, and Jim Fassler reported that raffle donations were great - nearly every merchant on the Peninsula had donated.

Cub Pack 213 News

Cub Scout Sports Patches and Pins were presented to the following: Andy Reynolds, David Cox, Dusty Letellier, Jeremy Zambel, Wesley Haskins, Mike Hoopet, Phillip Johannessen, and Henry Wenning.

The Pack's Bike Rodeo was held on August 3. The following participating
Continued on Page 28



Dan Patjens, Purdy Branch Assistant Manager, learns of dental examination techniques from Dr. John Olsson assisted by Dental Assistant Connie Wood as Receptionist Frankie Hacker jots down the examination record.

"Puget Sound National Bank gave me realistic and intelligent advice."

advises John D. Olsson, D.D.S., Key Center.

"The new business consultation given me by Purdy Branch Manager Vince Tilotta was excellent," Dr. Olsson states. "I appreciate the advice and business research provided me by the Puget Sound National Bank."

Dr. Olsson, University of Washington School of Dentistry graduate, opened his full time dental practise in Key Center in early June. Following graduation, he served in the U.S. Army Dental Corps in Europe and at Ft. Lewis.

Financial advice, based upon Puget Sound National Bank's experience, is available to individuals and businesses. It's a typical service. Every day.

**Everything you want
a bank to be.**

Puget Sound National Bank
Member FDIC

Gig Harbor

Purdy

Point Fosdick



all points bulletin
**SCHOOL'S OPEN!
DRIVE WITH CARE!**



KEY CENTER FAMILY DENTISTRY

**A
SURE CURE
FOR COWARDS**

HOURS:
TUES. 7:30-4:30
THURS.
FRI.

WED. 12:00-8:00
SAT. 9:00-3:00

**JOHN D. OLSSON
D.D.S.**

9013 Key Pen. Hwy. N.
Lakebay, WA

884-9455



GIG HARBOR'S URGENT MEDICAL CARE CENTER

Who: ANYONE WITH A MEDICAL PROBLEM,
ADULTS AND CHILDREN.

What: SORE THROATS, EAR ACHES, BACK PAIN,
LACERATIONS, FRACTURES AND ON
THE JOB INJURIES.

When: EVERY DAY INCLUDING HOLIDAYS
MON.-SAT. 9 A.M.-9 P.M.
SUNDAY 11 A.M.-7 P.M.

Where: THE WOODS
6655 KIMBALL DR.
GIG HARBOR — 851-8182

How: JUST WALK IN.
Appointments are not needed
Insurances Accepted



***But for life-threatening emergencies
call the Fire Department first.***

Continued From Page 25

LAMA spirit of the autumn harvest, donations for the local food bank are strongly encouraged.

Longbranch is approximately 17 miles south of Purdy on the Key Peninsula Highway. For those who prefer to travel by water, the festival grounds are within strolling distance of the dock in Longbranch on Fil Lucy Bay.

For further information, please contact LAMA, P.O. Box 351, Lakebay, WA 98349, or phone 884-3936.

Friends of the Library

The Friends of Key Center Library will hold their first meeting of the fall season, Wednesday, September 11, 7:30 p.m. in the meeting room of the library.

The Friends is a community support organization that sponsors special programs, book discussion groups, and raises money for materials and equipment.

The purpose of this meeting will be to decide on activities for the coming year. New members are encouraged and welcome to participate. Dues are \$3.00 annually.

We speak of the ugly truth or the awful truth, but these are only apparent truths. Real truth is beautiful, simple and changeless.

LONGBRANCH CALENDAR, SEPTEMBER 1985

Sunday, Sep. 1, Bible Study 10 a.m. Service, 11 a.m., Rev. Tom Fukuyama

Friday, Sep. 6, Choir 9 a.m., Bell Ringers, 11 a.m.

Sunday, Sep. 8, Bible Study 10 a.m. Service 11 a.m., Rev. Tom Fukuyama

Tuesday, Sep. 10, Home Social Club, 6:30 potluck, 7:30 meeting on proposal to re-establish salmon run in Home Cr.

Wednesday, Sep. 11, Peninsula Neighbors 10:30 a.m. doing crafts, fellowship hall at the church, bring a sandwich.

Friday, Sep. 13, choir 9 a.m., Bell-ringers 11 a.m.

Sunday, Sep. 15, Bible Study, 10 a.m. Service, 11 a.m., Rev. Tom Fukuyama

Monday, Sep. 16, Improvement Club, 7:30 p.m.

Thursday, Sep. 19, choir 9 a.m., Bell ringers, 11 a.m.

Friday, Sep. 20, Bayshore Garden Club, 1 p.m. Fellowship Hall, Church

Sunday, Sep. 22, Bible Study, 10 a.m. Service, 11 a.m. Rev. Tom Fukuyama

Monday, Sep. 23, Longbranch Ladies Circle, noon, bring sandwich

Friday, Sep. 27, choir, 9 a.m. Bell ringers, 11 a.m.

Sunday, Sep. 29, Bible Study, 10 a.m. Service 11 a.m., Rev. Tom Fukuyama.

Jackson Lake Calendar

Sep. 7, 7:30 p.m. Card Party.
Sep. 8, 1:00 p.m. Social Sunday Potluck.

Sep. 12, 6:30 p.m. Regular Meeting, Potluck. Dr. Ross, speaker.
Sep. 27, 6:30 p.m. Fun Night.

Senior Society

It is interesting to me that the month of September is not accurately named. September is the ninth month but the word "sept" means seven in the Roman calendar. However, we recognize the month, in today's time, as the ninth month of the year; the month when things start again, like school for instance.

Sep. 5 is the last Seniors Day of the 1985 season at Longacres. Let me know if you want to go, perhaps it can be set up. It is also men's day at the lunch table, and the day for our September business meeting.

Sep. 12 our feet are cared for, and on Sep. 19 our hearts are checked.

The Society is glad to see Clem back and looking as well as he does, and also Florence Slout who recently went through a heart operation.

Did you find the news of your group or Association in this issue of the News? If not, it is probably because no one got it written up and in to the office of the News by the 15th of the month. Tell us what your group is doing, and we will make every effort to include it in the next issue!

HOME LAUNDROMAT

HASKELL - WARREN OWNERS

COIN OPERATED MACHINES

DRY CLEANING

Week Days
7:30-9:00
Saturday
10:00-2:00

LAUNDRY SERVICE

Hours
7:30-9:00

Let us do it for you

WE DO:

- BLANKETS •
 - SPREADS •
 - SLEEPING BAGS •
- 884-9292**

Continued From Page 26

CUB SCOUTS

cubs received a segment: Jeremy Gray, Dusty Letellier, Sam Syvertson, Jake Frame, Henry Wanning, Patrick Jameson. Our annual June Pack Picnic and Awards Ceremony was held at Pentose State Park.

Awards were presented to the following:

Arrows: Dusty Letellier: 1 silver; Jeremy Gray: 4 silver.

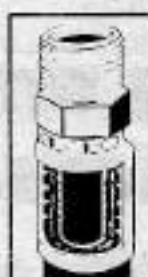
Webelos Advancement and Colors: Jesse Fenton.

Webelos Badge: Doug Best.

Webelos Activity Badges: Mike Hooper: Artist, Scholar; Wesley Haskins: Artist.

Other Awards: David Cox: World Conservation, Jesse Fenton, Phillip Johannessen and Jeremy Zambel.

Parker Parkrimp Hydraulic Hose Assemblies



PARKER NO-SKIVE

NOW IN STOCK

Gig Harbor Machine Works Inc.

857-4668

15115 - 118th Ave. NW
Gig Harbor, WA 98535

Longbranch Self-Storage

(1/2 Mile North of Longbranch Mercantile on the left.)

ON-SITE MANAGER
(Guard Dog On Duty)

• LOCKERS 5 x 5 & 5 x 10
• GARAGE SPACE 10 x 15 & 10 x 24
• COMMERCIAL STORAGE 20 x 20



RT. 2 BOX 425
LONGBRANCH, WA 98351

PHONE
(206) 884-4466

ON SITE MANAGER
884-4466

BOAT DRY STORAGE
Commercial Size Garages
(20 x 20)

WEEKDAY EVENINGS 6-9

WEEKENDS 9-6

CLOSED MONDAY AND

WEDNESDAY

WALT'S FINE FOODS

Look for Weekly In-store Specials

FRESH PRODUCE
QUALITY MEATS

In Downtown Key Center 884-3325

dump truck
backhoe
grader
blade

GRADER SERVICES
884-2271



top soil
road gravel
rockery rock
crushed rock

PHIL RADCLIFFE
route 1, box 95c
lakebay, wa 98349

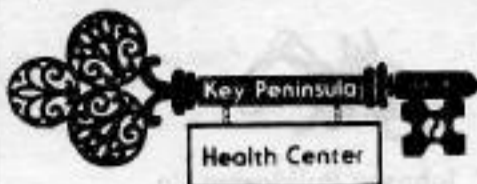
Longbranch Automotive Center

AUTO REPAIR JERRY HANSEN
+ DOMESTIC Longbranch, WA.
+ FOREIGN South of the Church
(206) 884-3272

HOME FEED & GROCERY

OPEN 9-9 WEEKDAYS 10-7 SUNDAYS
884-2321

Featuring "Choice Beef"
Fresh Produce
Fishers Feed
Friendly Service



WELL CHILD CLINIC

Every Tuesday at 9:00
Sponsored by the Angel Guild
884-9221

Residential Commercial

S.J. Akins Construction

Sam Akins
4819 Key Peninsula Hwy. So.
Longbranch, WA 98351
884-3522

New Construction Remodeling

Minter Creek Drilling

Complete Water Systems
Residential • Commercial

- Pumps -
Sales • Service • Installation
- Test Drilling -

State Licensed & Bonded
857-4609 Free Estimates

9's FAIR HARBOR MARINA

OPEN
7 - 5 Sun.
7 - 7 Daily
Closed
Wednesday



VISIT OUR FLOATING STORE

- Mini Grocery
- Beer
- Wine
- Gifts and T-Shirts
- Hats
- Fishing Supplies
- Geoduck Live \$1.35
- Frozen Steaks & Ground Geoduck
- Moorage \$2.75 Ft.

Bus. 426-4028
Res. 275-6417 Grapeview, Wash

P.O. Box 11271
TACOMA, WA 98411

NEW HOMES
APARTMENTS
REMODELS



S & E Electric, Inc.

ELECTRICAL CONTRACTORS
TACOMA SHOP 272-5813

GIG HARBOR
KEITH STANTON
857-4793

KEY CENTER
JIM LETELLIER
884-3132

"THE STUMP MAN"



If you can't dig 'em out
or blast 'em out, call me
Power stump machine removes all sizes

LOCALLY OWNED AND OPERATED
FREE ESTIMATES
857-8885
876-3842

Lucile's Barber Shop

Hours: Tuesday thru Saturday
10 a.m. - 6 p.m.

One short mile south of
Rocky Bay Health Care Center
on Hwy. 302 going to Shelton

884-3732

HOME PORT

Restaurant & Lounge
Under New Management
Jack & Leslie Beecher
Home, WA 884-3743

Key Peninsula Lutheran Church



REV ED WAGNER

Key Peninsula Highway
& Lackey Road

SUNDAY SCHOOL: 9:30am

WORSHIP SERVICE: 10:30am

DUANE G. FLEMING

Cascade Insurance Underwriters, Inc.

2200 6TH AVENUE • TACOMA, WASHINGTON 98403

AC 206/627-3133

Residence 884-3340

We do Alterations

We also
replace
zippers

7110 6th Ave., Tacoma

564-6471



Highland Cleaners

BELFAIR FLEA MARKET

(Next door to Belfair Thriftway)

OPEN EVERY WEEKEND
SAT. 9-5 SUN. 10-5

All types of furniture and
appliances available in our
6,000 SQ. FT. FLEA MARKET
3 CASH PRIZES DAILY!

WE BUY ALL GOOD HOUSEHOLD ITEMS
INCLUDING TOOLS, FURNITURE & APPLIANCES
For information call

898-2818

TAYLOR'S COMMERCIAL REFRIGERATION SERVICE

Walk-in Coolers & Freezers
Ice Machine & Restaurant
Equipment.

Heating & Air Conditioning

884-4749

LONGBRANCH MERCANTILE

FINE FOODS
MEATS-PRODUCE-GROCERIES
GAS-OIL-BEVERAGES

Mon.-Fri.: 6 a.m.-9 p.m.
Sat. & Sun.: 8 a.m.-8 p.m. 884-3721

L.E. Jopp Builders

- ★ Carpenter Work
- ★ Foundations
- ★ Bulkheads
- ★ Concrete Work etc.

884-3841

LICENSED & BONDED CALL COLLECT

ALCOHOLICS ANONYMOUS

MEETING HELD AT
KEY PENINSULA
MIDDLE SCHOOL
Mon. & Fri., 8 p.m.
Call Ann 884-2626



Randy's Bulldozing

- 4 in One Bucket
- Land Clearing
- Slump Haul
- Excavating
- Dump Truck
- Roads Punched
- GENERAL DOZING

RANDY NIMRICK
HARRY NIMRICK

1-857-2625
1-884-2590

Rt. 4, Box 4783-1
Gig Harbor, WA 98335

BULLDOZING
BACK-HOE



GRAVEL AND FILL DIRT
LOG BULKHEADS

Johnson Bulldozing Co.
LAKEWAY, WASHINGTON 98349
PHONE 884-2362

DAVE JOHNSON
PHONE 884-3330

PHIL JOHNSON
PHONE 884-2607

DORI RICHARDS OFFERS CLASSES

IN
OIL PAINTING WITH
PALETTE KNIFE

Tuesday Afternoon & Evening
206th Ave. Court KPN 884-4822

Specializing in Custom Homes

R & M ELECTRIC

RESIDENTIAL AND COMMERCIAL WIRING

MIKE NIEMANN 884-3778
ROY DANFORTH 884-2869

P.O. Box 48 • Burley, WA 98322

Tax Services
Financial Statements

Auditing
Bookkeeping



KEY ACCOUNTING
Fran Kent, Accountant

6706 Key Peninsula Hwy.S
Longbranch, WA 98351

Phone
(206) 884-3862

- *BULLDOZING
- *GRAVEL
- *LAND CLEARING
- *SUBDIVISIONS
- *ROAD BUILDING
- *DUMP TRUCK SERVICE
- *UNDERGROUND UTILITIES

#AC-TI-VC-*315PF



ACTIVE CONSTRUCTION

P.O. Box 191 Gig Harbor, WA. 98335
Bus. 851-4695 Eves. 884-2884

Longbranch Community Church

Bible Study:
10 a.m.

Worship: 11 a.m.
Longbranch, Wa.

Rev. Tom Fukuyama, Pastor, 565-5128



Handcrafts Gifts Open Sat., Sun. 10-5

Grandma's

Cup Board
884-2644

1 mile No. Key Center - SR 302

FAMILY DINING
Overlooking Henderson Bay
Homemade Pies and Cinnamon ROLLS

Pearl's by the sea

Tacoma-Bremerton Highway 16. Take
Purdy Exit. CALL: 857-2241
Mon.-Thurs. - 7:00 a.m. - 12 p.m.
Fri.-Sat. - 7:00 a.m. - 1 a.m.
Sunday - 9:00 a.m. - 12 p.m.

Vaughn
Community
Church



"The Chapel by the Sea"

— NEW HOURS FOR SERVICES —
8:15 a.m. — Early Church Service
9:45 a.m. — Sunday School
10:55 a.m. — Second Service

Pastor Chuck Altig 884-2269—884-3540

Nursery Provided

"Worship With Us!"

DAVID C. BARTON

Certified Financial
Planner



P.O. Box 842
Gig Harbor, Wa. 98335
857-5767

FINANCIAL NETWORK INVESTMENT CORPORATION



NEW ADDRESS

Effective May 28, 1985
Peninsula Key & Security
will be located at

7825 46th Ave. NW
(Rosedale and 46th)

With the relocation, our shop will be open
Monday thru Saturday 9 a.m. to 5 p.m.

TANNING THE HEALTHY WAY



September Special 20% Off Any Color Service

- | | |
|-------------|----------|
| Jazzing | Frosts |
| Glossing | Tint |
| Henna | Bleach |
| Loving Care | Luminize |

Tanning Special 3 Free Visits with purchase of 10 at **\$39.95**



Sylvia's Styling
& Tanning
Salon
K.C. CORRAL
(206) 884-2479



Call For Your Appointment Today

AIR CONDITIONED

VISA
MASTER CHARGE
WELCOME

CLASSIFIED ADS

CLASSES

AEROBICS CLASSES: The Civic Center in Vaughn. Monday, Wednesday, Friday: 9-10 a.m.; Tuesday, Thursday: 6-7 p.m., Gym. All ages and abilities. Babysitting available for a nominal fee. 884-3642 for further information.

MODIFIED AEROBICS CLASSES: Monday, Wednesday, Friday: 10:15-11:00 a.m., Gym. 884-3642 for further information. Babysitting available for both sessions.

HERBAL INTEREST home demonstration or mail order. Learn how to make forgotten crafts such as potpourri, rosewater, herb vinegar or drying your own herbs and more from our demonstrations, or order supplies by mail. Herbal Interest P. O. Box 223, Burley, Wash. 98322 or call 857-2657

WATKINS PRODUCTS now available on Key Peninsula. Try our famous vanilla. Have a get acquainted party. Need extra income, call for more information. Marvin or Myrtle Keizur 884-3566

HORSESHOING: Certified farrier, Mike Brewer. Hot shoes. 857-6923

SERVICES

BUD'S OF LAKEBAY: T.V. repair & tree top antennas and installation. Fast, dependable service. Lakebay 884-2217

ROTOTILLING & MINI HOE: Ralph Carlson, 884-2644

LONGBRANCH COOPERATIVE NURSERY SCHOOL: Be a part of your child's pre-school years. For information for Fall registration, call Maggie 884-3462

FLOOR COVERINGS INSTALLED: Carpet, linoleum, tile, parquet, ceramics. Orrie Moore, 884-3852

CHAINSAW REPAIR: New chain and grinding services. 884-4436

MOVING SALE: Cooper Clipper lawnmower, stereo combination console, tools, crocks, green quart jars, dishes, much more. 20 ft. self-contained travel trailer. 2716 150th Ave. K.P.S. 884-2067.

FOR SALE: Ford Courier or Mazda engine and transmission. 1800cc, runs good, both for \$300. 884-3221.

FOR SALE: 17 ft. aluminum boat & trailer. Fish finder & depth sounder. \$700, firm. 884-3221

AKC shaded sable Sheltie, excellent pedigree, for stud. After 6 P.M., 884-3439.

THANK YOU St. Jude, Stella.

ANGEL GUILD THRIFT SHOP, \$3.00 a bag sale. Sept. 5, 6 & 7. Hours - 10 A.M. to 4 P.M. K.C. Corral.

EXOTIC WOOD FOR SALE. Fine cedar, alder, madrona, wild cherry, etc. Call 884-3739.

LOST: Early July, young black & white long hair cat, between Lakebay Cross-roads and Palmer Lk. Has little white moustache, named "C.C.". Reward, call 884-3581 or 884-4440.

WANTED: 1 or 2 camper jacks, 884-3666

**SOMETHING
FOR
EVERYONE AT
THE CIVIC
CENTER.
CHECK OUR
CALENDAR.**

KEY PENINSULA CIVIC CENTER EVENTS September

**SOMETHING
FOR
EVERYONE AT
THE CIVIC
CENTER.
CHECK OUR
CALENDAR**

Sunday	Monday	Tuesday	Wednesday	Thursday	Friday	Saturday
1 Volleyball 9:30 - 12:30	2 Holiday	3 Karate - 6-8 pm	4 KPA - 7 pm FUN NIGHT - 7 - ?	5 Seniors - 12-4 pm Karate 6-8 pm	6 Grange - 7-11 pm	7
8 Volleyball 9:30 - 12:30	9 Aerobics - 9-10 Modified - 10:15 - 11 Volleyball - 7:30 - 11 pm	10 Aerobics - 6-7 pm Karate - 6-8 pm Exec. Board - 7:30 pm	11 Aerobics - 9-10 am Modified - 10:15 - 10:15 - 11 FUN NIGHT - 7:00 pm Park Board - 7:30	12 Seniors - 12-4 pm Aerobics - 6-7 pm Karate - 6-8 pm KPCC Board - 7:30 pm	13 Aerobics - 9-10 am Modified - 10:15 - 11 am	14
15 Volleyball - 9:30 - 12:30	16 Aerobics - 9-10 am Modified - 10:15 - 11 am Volleyball - 7:30 - 11 pm	17 Aerobics - 6-7 pm Karate - 6-8 pm V.C. Preschool - 9:15 - 11:30	18 Aerobics - 9-10 am Modified - 10:15 - 11 am FUN NIGHT - 7:00 pm V.C. Preschool - 9:15 - 11:30	19 Senior - 12-4 pm Aerobics - 6-7 pm Karate - 6-8 pm Cootiettes - 7-11 pm V.C. Preschool - 9:15 - 11:30	20 Aerobics - 9-10 am Modified - 10:15 - 11 am	21
22 Volleyball - 9:30 - 12:30	23 Aerobics - 6-7 am Modified - 10:15 - 11:00 Volleyball - 7:30 - 11 pm	24 Aerobics - 6-7 pm Karate - 6-8 pm V.C. Preschool - 9:15 - 11:30	25 Aerobics - 9-10 am Modified - 10:15 - 11:15 V.C. Preschool - 9:15 - 11:30 FUN NIGHT - 7:00 pm	26 Seniors - 12-4 pm Aerobics - 6-7 pm Karate - 6-8 pm V.C. Preschool - 9:15 - 11:30	27 Aerobics - 9-10 am Modified - 10:15 - 11 am Skating - 6-9 pm	28 Twilite Dance - 9-1:00 am
29 Volleyball - 9:30 - 12:30	30 Aerobics - 9-10 pm Modified - 10:15 - 11:15 am Volleyball - 7:30 - 11 pm					