



Non-Profit  
Organization  
U.S. Postage  
**PAID**  
Wauna, WA  
98395  
Permit No. 2  
BOX HOLDER

INSIDE & ONLINE

APRIL 2012

Exclusively Online



Spring Fling raises \$ for Arts in Schools

Also online

- No Primary Election
- Republican Caucuses
- Photo gallery online

Become a fan on Facebook  
Follow us on Twitter

keypennews.com

Inside

Spring making its way here.

— Page 24



News

News ..... 2-5, 7-8

Sections

Peninsula Views ..... 6  
 History..... 9  
 Community Pages..... 12-13, 15  
 House to Home ..... 14-15  
 Community .....16-19  
 Sports.....21  
 Out & About..... 24

Herron Island creates new water utility

By Danna Webster, KP News

It has been 22 years in the making, but Herron Island residents celebrated the initiation of their new water system on March 2. After decades of contentious discussions about unaffordable costs, the need for more information, and whether the water should remain in the Island's jurisdiction or be placed under the management of a utility district like Peninsula Light, members approved a water system replacement in a special meeting on March 19, 2011. The decision of the members was to create their own utility, the Herron Island Water Utility, which will serve under the direction of their board of directors.

"I've seen the community grow tremen-

(See Water, Page 2)



Photo courtesy of Vire D'Amico 16

No injuries reported

This Honda Civic pulled out in front of a school bus, was T-boned and went over an embankment and landed on the roof of a waterfront home. The accident happened March 13 in the Purdy Sandspit area. The driver of the Honda was not injured.

SR 302 planning continues, project begins 2014

Editor's Note: This is the final story in a series on SR 302.

By Marsha Hart, KP News

Safety improvements planned for SR 302 are estimated to cost \$6 million, and two intersections, Goodrich Drive NW and 118th Avenue, have been targeted as the most troublesome for motorists. Some improvements are scheduled for April, including Burton reflectors along the centerline to make night driving safer, as well as a reduction in the speed limit from 50 to 45 miles per hour.

The rest of the project is scheduled to go out for bid in the fall of 2013 with construction expected to begin in the spring of 2014. Though it seems a way off, Washington State Department of Transportation engineer Steve Fuchs said he is trying to prepare Key Peninsula residents for what lies ahead.

"When we do this project it will have an impact on their daily lives," Fuchs said. "We don't fall trees at night, so we will have flaggers during the day and stop traffic and we might stop traffic for

15 minutes while they fall the trees."

Replacement of the fish culvert just past 118th Avenue is also part of the project. "When we replace the culvert at 118th we might have to reroute traffic through Creston or something while we do that," he said.

Fuchs was a speaker at the March 14 Key Peninsula Community Council meeting and is scheduled to do so again in June, September and December.

"I have very much appreciated the work Steve Fuchs has done for the KPC Safe SR-302 committee," said council president Danna Webster. "He meets with them before every update presentation at the general meetings. He addresses questions and concerns directly. At every meeting, he proves to be a respectful listener and recorder of public suggestions. In the March meeting he showed the implementation into the project of a reduced speed limit in the 50 mph zones. That came out of a citizen's

(See 302, Page 5)

(From Water, Page 1)

dously the last couple of years, coming together on this project, said Mark Anderson, board president of Herron Maintenance Company. "It's nice that we have people on the island that are looking forward. We are trying to improve the quality of life over here and it's working."

Anderson is serving his second term as a director. He is a weekend islander and his home has no running water. He claims the best view from his property is from the out-house.

"This (water system) is a huge milestone for us. We've been shoveling dirt from one side of the pile to the other. Now we have a plan and a purpose... It's been 50 years and this is the first time to put shovel to dirt and get a new system," he says.

"Fifty years" refers to island history of the first property owners coming over in 1958 as campers. There was no water and no power. They carried water over from the mainland. The first well was dug by the early campers at the present site of the present day reservoir and where the new water system will connect.

According to HFC treasurer, Judy Greinke, the spirit of the island was born with the owners volunteering to work together to dig that first well. Greinke adds that arguments were a regular ingredient of board meetings for such decisions as the first ferry and a second well. One mutual agreement was they "enjoyed the pure clean Herron water," Greinke says.

In the early 1990s concerns for the inadequacies of the old water system and for maintaining the water quality became a fo-



Photo by Danna Webster, KP News

**Herron Island groundbreaking ceremony for the new Island Water System was held March 2. Mark Anderson, HMC President; Pat Zazzo, HMC Member-At-Large; Mario Villanueva, State Director United States Department of Agriculture; Gary Wanzong, HMC Vice President; Judy Greinke, HMC Treasurer; Claudia Ellsworth, HMC Manager; and Steve Chapin, Chairman of the Water Project Committee.**

cus of the membership. A \$940,000 price tag to replace the five miles of underground pipes and rumors of favoritism about who would get water first were reasons for voting against the project. In early October 2005, a new 99,000-gallon reservoir was placed in service. The new reservoir was designed to alleviate contamination problems related to the old reservoir and to meet current Washington Department of Health and Pierce County Fire Marshal capacity requirements. Inside the reservoir is a water circulation system, two underground pumps and large-diameter pipes and valves, which are the

beginning point for the 2012 water distribution system.

Success for securing the new water system project was realized mainly over the past two years and is credited, by many members, to the HFC manager, Claudia Ellsworth. Some call her the Mother of the Water System. Ellsworth put together the necessary building blocks: meeting the state and county requirements, bank financing, engineering design, and a construction crew. The first phase will be the excavation and replacement of the pipelines. Two construction crews will be in operation, one starting

at the north end and one at the south. The hope is to complete the first phase by Memorial Day.

"The island has really high quality, very pure, untreated water," Ellsworth says. "Our primary hazard here is wild fire... (with the new system, we have) 41 hydrants instead of three and our water pressure will be improved." She credits community volunteer efforts for the success of the water project. Volunteers serve on the board and the committees, volunteers show up for work projects, volunteers built the docks and volunteers ran the parks. "Thousands of (volunteer) hours — That builds a community," she says.

Herron Island was first dubbed Wednesday Island in 1792 by the Peter Puget expedition and was renamed by Lieutenant Charles Wilkes in 1841 for one of his lesser sailors, Seaman Herron. It is a half-mile wide and a mile and a quarter long. About 390 residents own about 500 property sites — some are weekenders, some are summer only and 120 stay on the island year round. The Charlie Wells Ferry provides transportation to the closest mainland neighbor, which is the Key Peninsula.

Recently, (some) Key Peninsula residents expressed objections to the noisy ferry engines. Some islanders told KP News they want their Key Pen neighbors to know that the recent improvements to the island will not interfere with plans for replacing the ferry motors.

"We are putting in the budget next year to replace ferry motors for fiscal fall of 2013," says HFC treasurer, Greinke. "We are investing in our future but we are listening to our neighbors also," she says.

To subscribe, please write,  
call or fax:

Key Peninsula News

17010 S. Vaughn Road

P.O. Box 3, Vaughn, WA 98394

Phone (253) 884-4699

Fax: (253) 884-4053

E-mail: news@keypennews.com

## KEY PENINSULA NEWS

www.keypennews.com

Unsolicited submissions deadline including press releases: 15th of each month prior to publication

Photo of Mount Rainier in the masthead was taken from the dock in Longbranch by Thomas Morgan, a KP News reader and Key Peninsula resident.

Key Peninsula News is published monthly by the Key Peninsula News publishing board in Vaughn, Washington. The Key Peninsula Civic Center Association is the non-profit parent organization. Copyright 2011 with all rights reserved. Reproduction of editorial or graphic contents in any manner without permission is prohibited. Annual subscriptions (12 issues) are available for \$30.00 and are mailed first class. Copies are mailed presort standard to residents and post office box holders of the Key Peninsula. Single copies are available at the newspaper office in the basement of the Civic Center annex and at various distribution points located on the Key Peninsula. Approximately 19,000 people live in the distribution area.

### STATEMENT OF OWNERSHIP, AND OPERATION OF THE KEY PENINSULA NEWS

1. THE KEY PENINSULA NEWS is a community newspaper, owned and published by the KEY PENINSULA CIVIC CENTER ASSOCIATION, a nonprofit, 501(c)(3) corporation with main offices in Vaughn, Washington. The name, goodwill and any copyright assets that may exist pertaining to the NEWS are among the financial assets of

Executive editor: Marsha Hart

Assistant editor: Danna Webster

Ad sales: Chip Butzko

Community pages editor: Connie Renz

Production: Chip Butzko, Paige Nader

Interim web master: Brett Higgins

Staff: Hugh McMillan, Colleen Slater,

Frank Slater, Irene Torres, Karina Whit-

marsh, Sharon Hicks, PJ Kezele, Kevin

Reed, Karen Lovett, Kyle Coster, Ed

Johnson, Eleanor Walters, Rick Sorrels,

Peter Ruble, Patricia Johnson, Don

Swensen, Adam Scroggins.

Distribution: Connie Renz, Vic

Renz, Phil Bauer, Frank Slater, Bill

Dietz, Kevin Reed

Contributors: Jerry Libstaff, Ron

Cameron, Dan Whitmarsh, Faith

Rhodes, John Gizzi.

Guest columnists: Tracy Butzko,

Lori Colba, James Latteri, Barbie

Swayze, Steve Whirford.

the KEY PENINSULA CIVIC CENTER ASSOCIATION.

2. The objective of Key Peninsula News is to support and create community by reporting news and features and providing a forum for local information. News and editorial coverage focuses on the Key Peninsula and immediately adjacent areas within Fire District 16.

### OUR GRATEFUL THANKS TO ALL WHO CONTRIBUTE TO THE KEY PENINSULA NEWS!

The opinions expressed herein are the opinions of the writers and do not necessarily reflect the views of the publisher or staff. All letters to the editor must be signed and include a daytime phone number for verification. No anonymous letters will be published. Submissions are used on a space available basis and may be edited if used. THE KEY PENINSULA NEWS reserves the right to edit all submissions for length and content. Mail letters to: P.O. Box 3, Vaughn, WA 98394, or e-mail to news@keypennews.com.



# connect with your schools

PENINSULA SCHOOL DISTRICT • 253.530.1000 • WWW.PSD401.net

## Minter Creek Principal Retires After 14 Years

Minter Creek Elementary Principal Steve Leitz believes being an elementary school principal is the best job in education — and he speaks from experience. For the past 14 years, he has served as the principal at Minter Creek Elementary, and previously led Evergreen Elementary for four years.

“The first six years of school are some of the most important. You set a foundation socially and academically, and create excitement and a willingness to learn new things,” he says.

After 38 years in education, including 22 with Peninsula School District (18 years at primary and four at middle level), Leitz will hang up

his principal’s hat this summer. He says he will miss the students the most.

“You get to know the families and the kids as individuals, and you get to know their personalities,” he says.

Leitz began his career in education as a teacher after debating between primary and secondary education.

Although he was on track for a doctorate, an opportunity to work at a college and with a special middle school project at the same time swayed him into the schools arena.

A native Washingtonian, Leitz eventually returned to the Pacific Northwest from the East Coast and chose Peninsula School District after being a substitute at four districts.



“Peninsula caught my interest as a progressive school district that had a lot of involvement by the community,” he says.

His most fond memories at Minter Creek include working with the staff. “We have such a talented staff here, and

pretty stable staff. Their work in the classrooms and on schoolwide activities and projects is amazing,” he says.

Leitz and his wife, Paula, a Pacific Lutheran professor, will soon be new grandparents and will be retiring at the same time. Besides spending time with their new grandson, they plan to sea kayak, garden and travel, among other things.

## Commencement Ceremonies



### Henderson Bay High School

Friday, June 15, 2012, at 7:00 p.m.  
Chapel Hill



### Peninsula High School

Saturday, June 16, 2012, at 4:30 p.m.  
Tacoma Dome

## 2012-2013 Kindergarten Registration

Thanks to the passing of the Replacement Educational Programs and Operations Levy we are able to continue with our 4-day, All-day Kindergarten program. Registration kicked-off March 17, 2012, and is ongoing at your neighborhood school. Downloadable forms are available at the PSD website and all elementary school websites. Welcome Class of 2025!

### APRIL EVENTS

- 5-7 Peninsula High School spring musical performances in the auditorium 7 p.m.
- 12 School Board Regular meeting 6:00 p.m. in the District office
- 13 Peninsula High School Pay it Forward Auction (Community Inclusion Program) in the Commons. Silent Auction 5:30 p.m. Dinner 7:00 p.m.
- 16-20 Spring Break—No school
- 30 DEADLINE for student transfer applications

### Superintendent Forum May 1, 2012, 6:30-8:00

p.m. at Goodman Middle School Please join Terry Bouck for an informal visit where anyone can ask questions or raise issues pertinent to the Peninsula School District. You do not need to have students enrolled in the school district to attend.

**Students of Distinction** The 2012 Students of Distinction, a program sponsored by The Peninsula Gateway, Umpqua Bank, Olympic Property Group, Kitsap Credit Union, Franciscan Health System, Peninsula Light Co. and the Greater Gig Harbor Foundation, will honor this year’s 34 recipients at a celebratory banquet on May 23, 2012, 6:30 p.m. at Chapel Hill.

# New playground coming to civic center

KP Parks and the civic center have partnered to bring a new play structure for children ages 2 to 12. It will be unlike any other playground on the Key Peninsula.

By Karen Lovett, KP News

Families will have another option for outdoor play this spring. In a partnership between the Key Peninsula Civic Center and the KP Metropolitan Park District, a new playground will be installed on civic center property in April.

KP Parks provided funding through money that was saved from the budget and set aside for the past three years. A small percentage of money will come from the shared revenue with Point Defiance and Northwest Tack, and user fees from activities such as Little League. The majority of the money is coming from Key Peninsula property taxes.

The joint committee is governed by Bill Trandum, vice president of KP Parks; Phil Bauer, KPCCA board member; and James Allyn, KPCCA caretaker and maintenance employee. Those three walked the grounds and reviewed plans and supplies. The new facilities will not duplicate the types available at other nearby parks.

"Two equipment sections will be installed," Trandum said. "One is for kids 2 to 5, and a larger section is for kids 6 to 12. They say the 6 to 12 equipment is sturdy enough to support a 70-year-old 240 pound Grandpa. It will be tested."

About a dozen vendors made equipment proposals. Three were invited to make presentations.

"The playground committee plus the two organization presidents and the parks director sat in on the presentations," Trandum said.

Landscape Structures, Inc. of Delano, Minn. was chosen to manufacture the Playcreations Playbooster. Started in 1971 by Barb and Steve King, virtually everything manufactured by the employee-owned company meet Park and Recreation safety standards and are made of environmentally preferable products including recycled permalene panels, he said. "They like to say their products are good for a generation."

The project is expected to take three years to complete, with phases scheduled each year.

"Year one is playground, year two is picnic shelter (similar to Home Park) and year three is vault toilets if we jointly decide they are needed," Trandum said. "The Park District foots the bills, the KPCCA puts up the land including parking and interim restroom use

and takes care of any permits needed. Both work at supplying volunteers to help with installation and maintenance. Parks make sure equipment and installation meet applicable public use safety standards."

Volunteers are needed:

Demolition Day, April 14th, 8:30 a.m. - 2:30 p.m., 5 volunteers will be needed to dismantle the existing equipment. April 17 - 18 new concrete footings will be poured. Installation Day, April 28th, 8:30 a.m. - 5:00 p.m., 25 - 30 volunteers will be needed to erect the new structure. If work is not finished that day, it will continue the next day. Workers willing to haul wheelbarrows of wood chips and anyone capable of turning a wrench are all the skills necessary to assist with the project.

Contact Scott Gallacher at the KP Park office or James Allyn at the civic center to volunteer.

The Grand Opening is scheduled for May 12 at the Jazzy Community Fair.

Now through April 30, 2012.

Get **5%** cash back  
on balances transferred to  
a Sound Visa credit card!

soundcu.com | 253.383.2016 | 800.562.8130

\*Transferring Balances: Sound Credit Union does not charge a balance transfer fee. Please allow 2-3 weeks to process your balance transfer. Continue to make your payments on these accounts until the payment for the transferred amount appears on your other issuer's statement. Sound Credit Union is not responsible for late payments on your other issuer's account. We are not able to close your other accounts until you transfer the entire balance. If you want to close the account, you will need to contact the issuer directly. Balances can be transferred up to your established limit. Offer subject to change. **Right to Decline:** Under certain circumstances (for example, if your account is past due or over limit, or if we reasonably believe you will be unable or unwilling to repay the balance, or as detailed in your Cardholder Agreement), we may decline to process your transaction, in which case you will be notified. **Cardholder Agreement:** For further details about terms or conditions on your account, please refer to your Cardholder Agreement. **Other Items:** Any special benefits of this offer apply to transactions from this offer only. **5% Cash Back Promotion:** Maximum \$750 cash back. Cash will be deposited to your checking account. If a checking account is not available, it will be deposited to your savings account. 5% cash back will be forfeited if balance is paid in full within 90 days. All Small Business and Home Equity Visa accounts are excluded from this offer. Transactions receiving cash back cannot be used to pay off other Sound or Westmark Credit Union Visa or loan accounts. **Platinum Cardholders:** Extra reward points will not be awarded on transactions receiving the 5% cash back. **Offer End Date:** Balance transfer promotion is valid through April 30, 2012. Transaction amounts used from these transfers will be applied to your established Sound Visa credit card limit and will be charged the standard APR as stated in your Cardholder Agreement or any subsequent change in terms. **Not a Sound Member?** Must be a Sound Credit Union member to participate. Membership at Sound requires a savings account with a \$25 minimum balance. Anyone who lives or works in Washington State can join. Standard underwriting guidelines apply.



**SOUND**  
CREDIT UNION

(From 302, Page 1)

request at the December meeting.”

Webster said Fuchs has also worked with Key Pen Parks.

“Recently Steve contacted Key Pen Parks commissioner, Bill Trandum, about the KPC committee recommendation for pedestrian trail considerations for the project. This has introduced the collaboration with our parks board on the SR-302 safety project. Steve has scheduled return visits to KPC meetings every three months to bring us updates on the project and to hear public comment. We feel that we have an excellent partner at WSDOT because Steve works with us.”

Since December Fuchs and his team have updated construction cost estimates for the safety improvement at 118th Avenue, verified right-of-way costs, requested traffic counts for intersections, completed a speed study, met with the Washington State Patrol and Fire District 16 officials and looked at a detailed study of accidents at the 118th and Goodrich intersections.

“We concluded that the widening at 118th needs to be to the south,” Fuchs said. “This was one of the highest accident locations along the corridor. People want to make left turns and there have been a lot of rear-end accidents.”

The same is true for the area at Goodrich Drive on the Purdy Spit. With traffic congestion and a lot going on along that stretch traffic wise, Fuchs said it is a challenge for motorists.

“That area has private driveways of people right on the water, three intersections right there, an entrance to a boat launch and pedestrians crossing the highway and no left turn lane at all,” he said. “There are a lot of rear-enders, people stopping for whatever, people backing out, a lot of high volume on the highway and very little gaps for people to get out onto the highway. People lose patience and pull out in haste and by adding a left turn lane through there

*“... 118th ... was one of the highest accident locations along the corridor. People want to make left turns and there have been a lot of rear-end accidents.”*

**Steve Fuchs**  
WSDOT engineer

we allow some free flowing traffic. It won't solve it 100 percent; it's a very busy area, but it will help a lot.”

To improve sight distance the hillside along the first Wauna curve just past Goldman Drive NW and continuing up the hill approximately 300 feet will be cut back. A left turn pocket will be added to the stretch of road from Goodrich Court to Goodrich Drive NW.

“Right now our project scope consists of two intersections to add left turn lanes and what goes along with that, removing trees relocating utilities and constructing highway ditches, clear a lot of the trees what we call larger fixed objects along the corridor so if someone leaves the roadway they don't run into a fixed object. Remove a lot of the large trees in the right of way and the other thing is the emergency pull-outs,” he said.

After talking with both the Washington State Patrol and the Key Peninsula Fire District, areas for emergency pullouts have been identified. These will give drivers a place to pull over if they are experiencing car trouble, and can also be used by the WSP for speed patrol.

More information will be given at the June 13 Key Peninsula Community Council meeting. The KPC meets the second Wednesday of each month at 7 p.m. at the Key Center Fire Station. For more information about the KPC visit [kpcouncil.org](http://kpcouncil.org).

## Local author semi-finalist for book award

Kira Schaumburg's book, "Her Last Race," is one of five semi-finalists competing for the Dr. Tony Ryan Book Award. Schaumburg resides in Vaughn. Sponsored by the Shane Ryan's Castleton Lyons in Lexington, Ky., with support from Thoroughbred Times, the award is to recognize and honor books related to

Thoroughbred racing, and to encourage great writing. The \$10,000 winner's prize is equal to that given for the prestigious National Book Award.

Three finalists will be announced on April 5, and the winner will be recognized at a reception at Castleton Lyons the end of April.

# WONDERS OF SPRING

Outstanding Plants featured this month

- Ornamental Trees-Great selection of Cherries, Plums & Magnolias
- Shrubs- Sure to please Pieris, Viburnums, Quince, Kerria & Lilac (over 15 varieties)



## Vegetable Gardening Time!

Cool Weather Varieties Now Available

*Veggies Here Now*

Lettuce • Spinach • Broccoli  
Beets • Onions • Cauliflower  
Cabbage



Arriving thru-out Month: Tomato & Pepper Plants & other summer growing veggies

## Roses

America's Favorite Flowers

- David Austin-the best in English Garden Roses
- Weeks-Beautiful Teas, Floribunda's, Grandifloras and climbers

All Bare Root Roses-25%off  
FREE Rose Organic Fertilizer recipe with purchase

## Easter Delights

for Sunday, April 9th  
from our floral department

- Centerpieces & Baskets in spring flowers
- Pots of Easter Lilies, Tulips & Daffodils



## April Class

**Moss Baskets**  
Sat. April 21st 11am  
class fee \$40.00

Create you own color & texture filled moss basket that you can enjoy all summer.  
Fee includes all materials.  
Class size is limited. Call now to reserve space.

## On Sale this month...

All Composters <b>45% off</b> make your own compost	Wooden Planters <b>30% off</b> perfect for the deck
---	---

Fox Farms Fertilizers  
**30% off**



Become our friends on 

Also visit our website: [www.sunnycrestnursery.com](http://www.sunnycrestnursery.com)

# SUNNYCREST

NURSERY & FLORAL

Mon.-Sat. 9am-6pm  
Sunday 11am-4pm

(253) 884-3937

Open everyday  
Located in Key Center



# Peninsula Views

## FROM THE EDITOR'S DESK

On March 7 I tendered my resignation as Executive Editor of the Key Peninsula News. My last day will be May 7, and our May edition will be my final edition as Executive Editor.

Over the past three and a half years we have implemented a few changes to the KP News. We've added some content, such as a Faith page, Sports, a Real Estate section, and we've revamped our online edition. We introduced some online exclusive stories about three years ago, and this year we launched a brand new website. At the same time we debuted our new masthead and redesign of the paper edition as well.

All of this meant recruiting writers, photographers and a webmaster.

It was my desire to make the KP News more interactive, so we created a Facebook page and engaged with our readers on breaking news and happenings on the KP.

I listened to readers who wanted to know more about crimes happening in their neighborhoods, and also what our fire department was doing. So we added the Fire Log and Sheriff's Blotter to the paper each month.

In an effort to bring new voices to the paper I recruited some freelance writers for news and sports.

It has been a thrilling ride. At the end of 2008 we produced a budget for 2009 not realizing the economy was about to tumble. With the help of our fund drives we have been able to operate in the black as we waded the storm that has lasted for the rest of my tenure. We were able to pay off a loan to the civic center. Though we scaled back on the number of pages each month in the past year, we packed as much information as possible into every edition of the KP News.

Journalism is exciting work, and I have enjoyed my time as Executive Editor of the KP News. Generating story ideas, coming up with ways to squeeze more news in during the final proofing process, working with the webmaster to get our new website launched, consulting with the paginator for the new design, and talking to readers and customers along the way has been a rewarding experience.

It has meant so much to me to work with such a wonderful group of people. Without the help of Danna Webster, assistant editor, I could not have done the job. Her steadfast work ethic, support and genuine care for both the product and staff is unparalleled.

The volunteers, each one of them, are so important to this newspaper. I have often extolled the praises of our unsung heroes who sling papers each month. Without that distribution team the work of everyone else would be in vain. The dedication of our volunteer writers is inspiring. Our KP News photographers are some of the best I've seen in the business. All of the behind the scenes production staff are so good at what they do, and they work beyond normal hours because that is the nature of this non-profit, volunteer, monthly publication.

I would also like to thank some very special people who have supported me along the way. Irene Torres, who served as Publishing Board President until 2011 helped me to see that I had what it took to make those hard decisions for the day-to-day operations. Bill Trandum has been an amazing mentor and cheered me on. John Nederlee and Frank Garrett have also been supportive and kind.

Thank you for reading. It has been a pleasure to provide information to this community.



Marsha Hart, editor

## GUEST EDITORIAL

### Publication getting a 'reboot,' reader panel being formed

Kevin Reed  
Publishing Board President

For the most part the function of a newspaper is publish the news, not make it. But, every once in awhile it makes sense to provide readers with a little insight as to what's going on behind the scenes, and where the paper is headed. In an effort to make what we believe to be a good paper even better, the volunteers and staff who create the paper each month have been working on what we call a "reboot." The reboot is a concerted effort to evaluate all of the processes and procedures necessary to put the paper out and find ways to improve and streamline them. That includes everything from our editorial process to advertising and distribution. And it's no small task because it's sort of like performing a tune-up on a car while it's still in motion.

We hope to complete the reboot by the beginning of June. In the meantime we will continue to focus on our everyday mission, which is to provide the citizens of the Key Peninsula with news and information pertaining to community that they live in.

To further those goals, The Key Peninsula News is establishing a community panel whose role will be to provide reader feedback and input. The panel will meet two or three times during May-July, and may be reconvened later on a regular schedule. If you'd like to serve on the panel, please email a paragraph about your interest and a short bio (or a one-page resume or link to online resume) to editor@keypennews.com by May 5. Thanks again to both our readers and advertisers for their continued support. We will continue to do everything we can to earn and maintain your trust.

*Key Pen News Board of Directors*

### Letters Policy

The opinions expressed herein are the opinions of the writers and do not necessarily reflect the views of the publishers or staff. All letters to the editor must be signed and include a daytime phone number for verification. No anonymous letters will be published. Submissions are used on a space available basis and may be edited if used. THE KEY PENINSULA NEWS reserves the right to edit all submissions for length and content. Mail letters to: P.O. Box 3, Vaughn, WA 98394, or e-mail to news@keypennews.com.



Photo by Marsha Hart, KP News

### Way off road

The driver of this truck spilled hot coffee on his lap and swerved into Henderson Bay on March 11. Once he launched into the water he kicked out the sunroof to escape from the sinking vehicle. He was not injured.

## Hart resigns as KP News editor

Key Peninsula News executive editor Marsha Hart has resigned, effective May 7. A Key Peninsula resident, Hart has served in the role since September 2008.

During her tenure, Hart worked to keep the newspaper going during a severe recession, dealt with all the many management issues that came her way and worked with Webmaster Brett Higgins to enhance and redesign the Key Peninsula News website.

"The Key Pen Publishing Board would like to thank Marsha for her service to both the paper and the community that it serves," said Key Peninsula Publishing Board President Kevin Reed.

The publishing board has contracted with Rodika Tollefson to serve as an interim editor. (The board is comprised of three elected volunteer staff members and two representatives appointed by the parent organization, Key Peninsula Civic Center Association). Tollefson is a longtime Key Pen resident who previously served as the executive editor from 2003 to 2008.

Danna Webster has been acting in a volunteer role as the Assistant Editor with Hart, and will continue that role during the transition, moving to staff as an Interim Assistant Editor. "Danna will support the editor in a role that she has played extremely well in the past. The board feels that with two experienced veterans running the day-to-day affairs of the paper, the community can expect a very smooth transition."

Tollefson's background includes more than 12 years as a journalist and editor. She is currently a freelance writer, editor and communications consultant, and is also a graduate student in the University of Washington Master of Communication in Digital Media (MCDM) program.

She will serve under a part-time contract for three to six months to allow the board to finish a review of operations, launched earlier this year, and to help hire a successor. She has been involved with the operations review committee as a volunteer community member, and will continue that work as a volunteer.

## A LOVE SO GREAT EASTER ON THE KEY PENINSULA

Thursday, April 5th

Key Peninsula Lutheran Church  
7:00pm - Last Supper Drama

The Church That Meets on the Farm  
7:00pm - "The Last Supper  
Communion and Commemoration"

Lakebay Community Church  
6:30pm - Seder Service

Good Friday, April 6th

Key Peninsula Lutheran Church  
7:00pm - Good Friday Service

WayPoint Church  
7:00pm - Good Friday Service

Longbranch Community Church  
12:00 - 6:00pm - Sanctuary Open for Prayer

Easter Morning Services - Sunday, April 8th

### Historic Vaughn Bay Church

Key Peninsula Civic Center, 884-9303  
(VFW Room)

7:30am - SUNRISE SERVICE  
at Vaughn Bay Cemetery  
(VFW room at Civic Center in case of rain)  
9:30am - WORSHIP SERVICE

### Longbranch Community Church

13518 46th Street KPS, Longbranch, 884-9339  
7:15am - SUNRISE SERVICE on  
Heron Island (ferry service at 7)  
10:30am - EASTER WORSHIP SERVICE

### The Church that Meets on the Farm

10515 Wright Blvd Rt KPN, Gig Harbor  
225-3070  
10:00am - RESURRECTION DAY SERVICE  
"LIFE BEGAN IN A GARDEN"

### Key Peninsula Lutheran Church

4213 Lucky Rd KPN, Lakebay, 884-3322  
10:30am - RESURRECTION OF OUR  
LORD SERVICE

### Lakebay Community Church

11 Cornwall Rd KPS, Lakebay, 884-3809  
7:00am - SUNRISE SERVICE

at Camp Woodworth  
(1305 Woodworth Dr. KPS NEW LOCATION! )  
9:30am - EASTER RESURRECTION  
CELEBRATION

### WayPoint Church

22721 133rd Ave KPN, 833-7777  
9:30am & 11:00am - RESURRECTION  
CELEBRATION SERVICE

HE  
IS  
RISEN!



# BRIEFS

## News

### PSD superintendent announces retirement

Superintendent of Peninsula School District, Terry Bouck, announced he will retire at the end of the school year. Parents, teachers and staff received a letter from Bouck March 9 announcing his intention to retire.

After 39 years in education, Bouck said the six years with PSD were "the most rewarding years of my career."

Bouck cited many accomplishments such as collaboration time, long-range facility planning, successful levy campaigns, community partnerships, reforms and efficiencies to mitigate budget reductions, all-day kindergarten, and exceptional and innovative staff.

"There is no doubt in my mind that the Peninsula School District will continue to move forward in the years to come," he said.

### Fishermen's Breakfast, Yard Sale support youth

The annual Fishermen's Breakfast at the Key Peninsula Sportsmen's Club will be held April 29 from 7:30 a.m. to noon. The all-you-can-eat breakfast includes pancakes, ham and eggs with lots of fruit juice and great coffee for only \$6. Children 6 and under are free.

The breakfast has been an annual event for many years, and also serves as an opportunity for many of the area's old-timers to meet and reminisce. Raffle tickets will be on sale during the breakfast with a chance to win many wonderful prizes.

Another event scheduled for the same weekend is the club's annual yard sale. The two-day event begins April 28 from 9 a.m. to 4 p.m. and continues on April 29 from 7:30 a.m. to 1 p.m. Both events will be held at the Key Peninsula Sportsmen's Club located on Jackson Lake Road

in Lakebay.

The Key Peninsula Sportsmen's Club, a non-profit organization, has been a member of the Pierce County Sportsmen's Council since 1947 and regularly supports the activities of our area's youth. Your participation in this annual event helps make it possible for local youth to attend summer camp, participate in Little League, and provide other services to our community, especially the Key Peninsula Community Service Food Bank and Senior Center.

For more information about The Key Peninsula Sportsmen's Club, contact Bill Smith, Secretary at 884-2655 or Ruth Bramhall, Vice-President at 857-5184.

### Pierce County Council to meet at KPMS

The Pierce County Council in-district meeting will be April 24 at 6 p.m. in the commons at Key Peninsula Middle School.

Each council member has the opportunity to choose the date and location of a meeting within his or her district each year. Stan Flemming (R) represents District 7.

"We can meet anywhere in our district and last year we met in Gig Harbor, so this year we thought we would meet on the Key Peninsula," said Cindy Willis, Flemming's assistant. "As always, they are open to the public and we move around to different locations in hopes that people will come out to see what the county council meeting looks like."

As of press time the agenda had not been set for the meeting.

Flemming is running for Congress to represent Washington's 10th District, a newly formed district within the state. During the Pierce County redistricting, Flemming was drawn out of the district he represents when University Place was drawn into District 4. Flemming resides in University Place, and council members must reside within the district they represent.

Flemming continues to represent the Key Peninsula and Gig Harbor until his term expires in three years. If elected to Congress, the Republican committee will provide a list of three names to the council and a person on that list will fill Flemming's vacated position.

For more information call his office at 798-6654.



**Ray's Meat Market**

Place your orders for the  
**Easter Holidays...**

We feature Bavarian Meats,  
rich smoked bone in ham,  
Hemplers spiral cut &  
gourmet boneless hams



Also our local  
all natural spring  
leg of lamb.  
Bone in and  
boneless lamb (Bnls) and Rack

You've tasted the rest...  
Now try the **BEST!!**

Open Sundays 10am-2pm  
Open Saturdays 10am-2pm  
Open Sundays 10am-2pm

360-432-4241



**ARBOR DAY**  
The public is invited  
to the 12th annual  
**Gig Harbor  
Arbor Day Celebration!**

Saturday, April 28th • 11 am-2 pm  
Gig Harbor Civic Center~3510 Grandview St.  
(Off Pioneer St. in Gig Harbor)

- FREE ADMISSION and TREES for all visitors
- Complimentary refreshments
- Student poster, poetry, essay and photo winners honored
- 2012 Good Stewardship Award announced
- An arborist to answer your tree questions
- Interactive environmental booths
- Harbor Heights Orca Singers to perform
- Children's nature crafts activities
- Raffle drawings throughout the day
- A tree planted at the Civic Center

Sponsored by the  
Gig Harbor Peninsula Arbor Day Org.  
a 501(c)(3) non-profit foundation  
Website: [www.gigharborarbor.com](http://www.gigharborarbor.com)  
Email: [arbor@gigharborarbor.com](mailto:arbor@gigharborarbor.com)

**THE GLASS CAVE**

GLASS - DISC GOLF GEAR - CLOTHING

**GRAND OPENING**

YOU HAVEN'T BEEN TO A STORE SHOP  
UNTIL YOU'VE BEEN TO THE GLASS CAVE.


RECEIVE 20% OFF YOUR PURCHASE  
WHEN YOU BRING IN 2 CANNED GOODS!  
HELP OTHERS AND HELP YOURSELF.

SALE ENDS 4/30/2012

FIND US ON FACEBOOK

12404 134TH AVE KP N, GIG HARBOR, WA 98329  
(255) 851-1665 MON-SAT 11-8

**Discipline Honor**      **Respect Integrity**



**ATA**  
BLACK BELT ACADEMY

Creating Tomorrow's  
Leaders Today

**Introductory Classes**  
Thursdays at 6 pm  
Key Peninsula Civic Center.

Get started today  
for only \$70!

Call  
**206-949-9722**  
for an appointment

**ATA Black Belt Academy**



# KP Historical Society Museum opens April 5

By Colleen Slater, KP News

The Key Peninsula Historical Society museum opens late this year, due to renovation and reorganization of both main room and office.

Penrose Point State Park is the main exhibit for 2012.

Dr. Stephen Beasley Linnard Penrose, past president of Whitman College in Walla Walla, brought his family to Delano Resort in the summer of 1890 on the recommendation of a friend; it became an annual retreat for them.

Walks in the woods and rowboat rides to Prospect Point were favorite diversions of Dr. Penrose. In 1900, he and his sister purchased nearly seven acres, which included the point, from the Delano family for \$400. They created their own campground with tent platforms. All materials and equipment were brought in by boat, as there was no road access.

Photos, maps, and artifacts used by the Penrose family when they camped there from 1916-1951 make up a varied display. Six children, other family members and friends, including visiting dignitaries, made a lively summer season at "Camp Madronas."

Penrose proposed starting a Congregational church at Longbranch for the English speaking residents of the area.

He organized community volunteers to clear the land and build a church that became a local landmark for many years. He served as pastor for several summers at the Longbranch Congregational Church. The congregation named their social gathering place on the lower floor of the new building Penrose Hall.

A new venture for the museum this year is a set of four informative classes for adults and children. Included in the free classes will be some Penrose history, hands-on toy building, games, music and even cooking. Scheduled dates and topics are:

April 12—Introducing the Penrose family; the journey from Walla Walla to Penrose Point; labeling a KP map; set-

ting up a camp.

June 14—Transition from Delano Hotel to Penrose Point; A shell matching game; making clam chowder; a typical day in camp 100 years ago.

Sept 20—Trails around Penrose Point; potato game and nail pounding game; identifying local plants and berries; making "camp cobbler."

Nov 8—Packing up at end of camp; Burton sewing game; camp songs; sketching campsite; evaluation of classes.

Classes will meet from 1-2 p.m. at the museum. Space is limited, so sign up early. For more information or to reserve spaces, call 884-1400.

Two lectures at Penrose Park's new amphitheater will be scheduled for Saturday evenings in late July or August.

A small display gives a preview of the 2013 exhibit on KP Logging. Owner John McFadden operated Upper Sound Logging Co. of Vaughn from about 1908 - 1923. A logging train brought in by scow hauled logs from their main camp near Lake Holiday to Vaughn Bay, where they were dumped into the bay, rafted together, then pulled to mills around Puget Sound by tugboat.

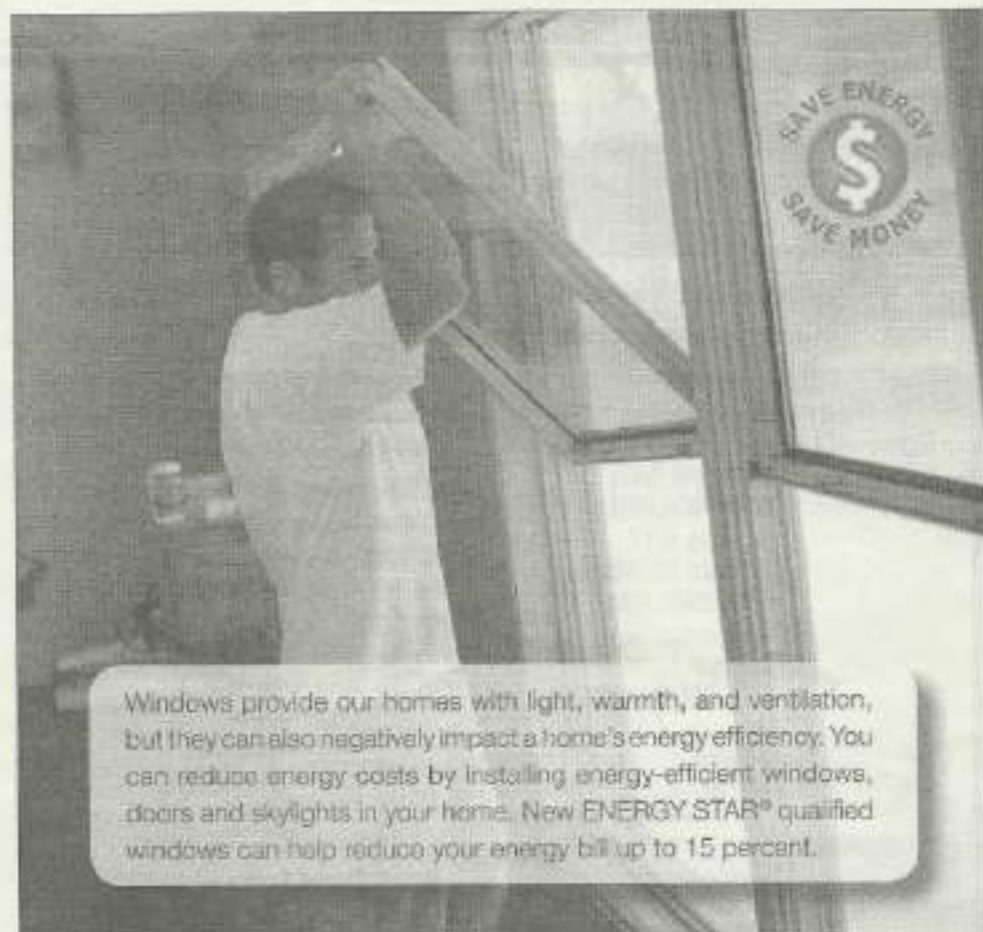
Bunkhouses for up to 150 men, a cookhouse, and company headquarters were located at the main camp.

The KP Historical Society thanks the KP Parks Board for an annual grant to facilitate the educational displays and classes at the museum.

A July 7 cruise from Longbranch will be a fundraising event for the historical society. The boat leaves the dock at 2:30 p.m., with a narrated history tour of the area, appetizers and a no-host bar. Call 884-1400 for more information.

The Spring membership meeting is on March 31, noon - 3 p.m. at the VFW room, KP Civic Center. Current and prospective members and interested guests are all welcome. Call 884-2511 or 884-5403 for more information. Election of officers will be held during the meeting.

Museum hours are Thursday and Saturdays, 1-4 p.m., or by appointment.



Windows provide our homes with light, warmth, and ventilation, but they can also negatively impact a home's energy efficiency. You can reduce energy costs by installing energy-efficient windows, doors and skylights in your home. New ENERGY STAR® qualified windows can help reduce your energy bill up to 15 percent.

**\$6** Peninsula Light Company is offering per square foot on qualifying measures for

## Window Weatherization

Pre-existing windows must be:

- Single Pane • Single Pane with Storms, or
- Double Paned with Metal Frame

Replacement windows must have a National Fenestration Rating Council (NFRC) rated **u-value of 0.30 or lower.**

Additional documentation required. Program is limited to electrically-heated homes. Maximum rebate amount is \$1000.

To pre-qualify for this rebate, please call

**253.857.5950**

or e-mail [energyspecialist@penlight.org](mailto:energyspecialist@penlight.org)

**Peninsula Light Co.**

*The power to be...*

Be sure and check out the Efficient Windows Collaborative Web Site for unbiased information on the benefits of energy-efficient windows, descriptions of how they work, and recommendations for their selection and use: [www.efficientwindows.org](http://www.efficientwindows.org).

# KEY PEN PARKS



www.keypenparks.com ~ 253-884-9240  
answers@keypenparks.com

## SPRING BREAK CAMPS

**Ages:** 5-9  
**Location:** Volunteer Park  
**Days/Times:** **MAD SCIENCE**  
Tuesday 4/17  
9:30am-12:30pm  
**CREATIVE ARTZ**  
Wednesday 4/18  
9:30am-12:30pm  
**ECO ADVENTURE**  
Thursday 4/19  
9:30am-12:30pm  
**Fee:** \$15 per session

## YOUTH CLASSES SPRING SESSION (APRIL-JUNE)

### Sports Sampler

**Ages:** 5-9 or 3-4 (Pee Wee)  
**Location:** Volunteer Park  
**Day & Time:** Tues. 1:30pm (3-4 yrs.)  
or Thur. 4pm (5-9 yrs.)  
**Session Dates:** 4/24-5/29 (3-4 yrs.)  
or 5/10-6/14 (5-9 yrs.)  
**Fee:** \$45 for 6 classes

### Pee Wee T-Ball

**Ages:** 4-5  
**Location:** Volunteer Park  
**Day & Time:** Thurs. 5pm or 6pm  
**Session Dates:** 5/10-6/14  
**Fee:** \$45

### Music N Motion

**Ages:** 4-9  
**Location:** Civic Center VFW Room  
**Day & Time:** Wed. 4pm  
**Session Dates:** 5/9-6/13  
**Fee:** \$45 for 6 classes

## VOLUNTEERS WANTED

**April 14, 21, & 28**

Many special projects at our parks and the Civic Center are in need of community help. Contact Scott at scottg@keypenparks.com or 884-9240.

Questions? Contact Jessica Smeall, Recreation Coordinator 253-884-9240  
or jessica@keypenparks.com

## ADULT PROGRAMS

### Once-A-Month Cooking Class

Learn how to feed your freezer so that you always have nutritious, homemade meals: cook once, eat for a month. Each participant will prepare four complete freezer meals.

**Location:** KP Civic Center Kitchen  
**Day/Time:** Sat. 4/28  
9:30am-12:30pm  
and/or Sat. 5/19  
1:00-4:00pm  
**Fee:** \$20 class fee +  
\$15 food fee

### Adult Coed Softball League

**Location:** Volunteer Park Field #1  
**Day/Time:** Thursday nights, games  
start at 6:30pm  
**Dates:** April 19-June 21  
**Fee:** \$575/team (fee  
includes registration, USSSA  
fees, & local sales tax)

### Outdoor Boot Camp

Rain or shine, this class will get active outside at various parks on the peninsula.  
**Location:** KP Parks & Trails  
**Instructor:** Shannon Reichl  
**Day/Time:** Tues. and/or Thur.  
6-7pm  
**Dates:** April 24-May 31  
**Fee:** \$30 for 6 classes.

## SPECIAL EVENTS

### Touch-A-Truck

at the  
Civic Center Liveable Community Fair  
5/12

### Junk in your Trunk Sale

at  
Volunteer Park  
6/9

### Summer Fun Run

at the 360 Trails  
6/16



Photo by Colleen Slater, KP News

Author Karen Lovett

## New book with local roots

By Colleen Slater, KP News

Karen Lovett's debut book, "Beneath the Surface," takes place mostly on the Key Peninsula and in Kitsap County.

Joe Rein, a former classmate, inspired the book begun in 2004. They became reacquainted when Lovett rode her horse on Alpine Tree Farm, where he was a tree patrolman.

This fictional story "is not based on his life, although his duties, some local happenings and culture were woven into the plot," Lovett says. "Forty days of record rain were the catalyst for a major twist of events."

"A Kitsap County Sheriff's Deputy making a presentation at a Kitsap Peninsula Mycological Society meeting warned members to watch out for drug growing operations in local forests during mushroom forays. Another turn of the plot was formed," she adds with a smile.

The book, set aside for long periods of time between drafts, was finished at the end of 2011. Lovett took the photos and did the cover design graphics.

"It took months to find a bay-colored Arabian horse and rider for the cover. Dannelle Haugen was thrilled to share that space with Rein, the tree patrolman who had confronted her for riding on Alpine land without a permit, similar to the

storyline from the book," she says.

Lovett chose Plicata Press, Gtg Harbor cooperative publisher, "because of the ability to work closely on the project from start to finish. It offers an inexpensive method of publishing while maintaining ties with Lightning Source and Ingram for marketing."

"The trade-off for maintaining control and keeping costs down is the amount of time and effort necessary to do everything myself. It is possible to hire someone else to do the work. I wanted to keep the costs as low as possible without sacrificing quality," says Lovett.

A staff writer for the Key Peninsula News and managing editor for Lakebay Writers, Lovett is a member of Key Peninsula Writers Guild, Watermark Writers, Key Peninsula Book Club, Friends of the Key Center Library, a director on the Key Peninsula Community Council, and a volunteer at the Key Peninsula Food Bank. She writes poetry, songs, and short stories.

Her next novel, "Rise with the Eagle," is also set on the Key Peninsula. Publishing plans are for early 2013.

"Beneath the Surface" is available from Barnes and Noble and Amazon.com. It will be available on e-books and Kindle sometime in April. Her website is www.karenlovett.000a.biz.

**Key Pen Parks**

"The key to your next adventure"



**YOUR TALENTED NEIGHBOR**

**Kathy Bauer is award-winning photographer in Vaughn**

By Don Swensen, KP News



*Photo courtesy of Molly Duttry*

**Vaughn resident Kathy Bauer.**

Most of us take pictures. Often we do this to remember important moments or events in our lives. As meaningful as these pictures may be, they would rarely be seen as pieces of art by the general public. To take a photograph that is a piece of fine artwork, takes a real photographer, with a true artistic eye. To do that takes someone like Kathy Bauer.

Originally from Kirkland Kathy has been a Key Peninsula resident, and pursuing her passion for photography, for 25 years. She and her husband Phil live in Vaughn on the west side of the peninsula with extraordinary views of Case Inlet and the west sound, and all the beauty that surrounds it. It is this view that inspires quite a bit of Kathy's photography.

Mountain forests draped in mists, the last rays of the setting sun reflecting off clouds and water, delicate rose

petals captured in close-up detail, these are some of the images that make up Kathy's portfolio. A personal favorite is

her panoramic portrait of the Olympic Mountains. Last year, after a great deal of research with the Olympic National

Park rangers and Google Earth, she created a poster from her photograph, on which she named each peak and its elevation.

Kathy's photographic work has brought her numerous People's Choice awards, and Honorable Mentions over the years. Along with being a very talented photographer, Kathy is also a potter, working with and producing fine pieces of art from clay.

She is a founding member of the Two Waters Arts Alliance, a local, non-profit organization that has been promoting arts on the Key Peninsula for over a decade.

"I am totally committed to expanding participation and education in the arts," Bauer said.

I encourage you to visit Kathy's website at [www.kathybauer.com](http://www.kathybauer.com). Spend some time with her images. See the beauty of this place we all call home through the eyes and camera of your very talented neighbor Kathy Bauer.

**Elbrus Kennel**  
**Caucasian Sheperd**  
 Best livestock and property protectors  
**253 884 1389**  
 ask for Olga  
[www.facebook.com/OlgaElbrusKennel](http://www.facebook.com/OlgaElbrusKennel)  
 Longbranch, WA

**Longbranch Community Church**  
[www.longbranchchurch.net](http://www.longbranchchurch.net)  
 Come and join us for  
 Interdenominational Services  
 Sunday School 9 am  
 Church Services 10:30  
 16518 46th St. KPS, Longbranch  
 884-9339  
*God's Blessings to You - Pastor John Day*

**Murph's BBQ & Catering Service**  
 @  
**Volunteer Park**  
*(Remember me from the Puyallup Fair)*  
 April 2012  
**884-9693**  
**988-8108**  
**Hours:**  
 Mon-Friday-3 pm-8 pm  
 Saturdays-10 am-7 pm  
 Sunday-Only Private Parties  
 Reservations Required  
 On-site cooking for ANY occasion

**April 2-April 7**  
*Pulled BBQ Chicken Sandwich w/Potato Salad & Dirty Rice*  
 \$6.50

**April 9-April 14**  
*Pulled BBQ Pork Sandwich w/Red Beans & Dirty Rice*  
 \$6.50

**April 16-April 21**  
*Beef Basket Sandwich w/Baked Beans & Coleslaw*  
 \$6.50

**April 23- April 28**  
*1/4 Chicken Dinner w/Potato Salad & Baked Beans*  
 \$7.50

**April 30-May 5**  
*Chicken & Rib Dinner w/ Potato Salad and Baked Beans*  
 \$8.50

**9013 Key Peninsula Highway**  
 - located in the KC Corral -  
 Phone: 253-313-0240  
 Fax: 253-313-0241  
[lakebay@goinpostal.com](mailto:lakebay@goinpostal.com)

**FedEx UPS Postal Mail**

**ADDITIONAL PRODUCTS AND SERVICES:**

<b>Copy Services</b> Black & White Color Booklet	<b>Office Supplies</b> Packing Supplies Custom Packaging Greeting Cards Laminating	<b>Postal Mailboxes</b> Notary Services eBay Selling Agent Kodak Digital Photos Passport Photos
---	--	---

# COMMUNITY PAGES

Submit calendar items to [news@keypennews.com](mailto:news@keypennews.com) • Deadline is the 15th of the month

## NOW

### GED classes

Enroll now! Key Peninsula residents may complete a basic skills education for college entrance, employment skills, or a GED. Class meets Tuesday, Wednesday and Thursday from 9:30-11:30 a.m. at the Home Fire Station. Evening classes (6 to 8 p.m.) are available at the TCC Gig Harbor Campus. One can enroll at any time. For detailed class information, registration and orientation call Tracy Clark, 253-460-2356.

### Swim for fitness

Water aerobics and open swim times are available at the Camp Stand by Me Easter Seals heated pool on Vaughn Road. Classes meet at 8-9 a.m. or 9:20-10:20 a.m. and cost \$4.25/session paid monthly. Register with Donna, 884-4473.

Evening open swims on Monday, Tuesday, and Thursday from 5-6 p.m. and family swim on Wednesday from 5-6 p.m. (children under two swim for free) are available. Cost is \$4.25/swim or 10 swims with a punch card available for \$40. Call 884-2722 or [joshua.trayer76@gmail.com](mailto:joshua.trayer76@gmail.com).

## NOW through APRIL 13

### READS

Pierce County READS is the largest community event in Pierce County. Read, discuss, and connect during the fifth annual Pierce County READS through Friday, April 13, 2012 by reading "The Hotel on the Corner of Bitter and Sweet" by Jamie Ford. Join with thousands of other people in Pierce County to read, share, and talk about this best seller by an award-winning author.

All 18 Pierce County Libraries and some community partners will offer more than 30 free events with themes from the book. The KeyBank Foundation is the major corporate sponsor.

## MARCH 30-31, APRIL 1, 5-7

### Drama performance

The Peninsula High School drama department presents "The Drowsy Chaperone" at The Milt Boyd Auditorium.

## To submit an event

To submit an event for the Community Works calendar, please e-mail [news@keypennews.com](mailto:news@keypennews.com) or mail to P.O. Box 3, Vaughn, WA 98394. Briefs must be submitted by the 15th of the month.

Performances are at 7 p.m. on Friday and Saturday and 3 p.m. on Sunday; tickets are \$10 for adults and \$7 for students/seniors. 253-530-4450.

## MARCH 31

### Pet Easter hunt

The annual KP Parks' Pet Easter Treat Hunt at Volunteer Park is from 10 a.m.-noon. Check in at 10; hunt starts promptly at 10:30 a.m. All pets must be on a leash. Dogs will find treats and perhaps win the costume contest; there are also free pictures taken with the Easter Bunny. Please bring a bag for the treats and a donation of pet food for the Humane Society. [Jessica@keypenparks.com](mailto:Jessica@keypenparks.com) or 884-9240.

### Historical society meets

The KP Historical Society's annual meeting is at noon in the VFW room at the KP Civic Center. Members, guests, and others interested are welcome. Bring dishes and something to share; beverages are provided. Election of officers will be held and exciting new projects for the year will be explained. Visitations to other museums are being scheduled.

### Taiko drummers

The Friends of the Key Center Library and the Longbranch Improvement Club present One World Taiko, Japanese drum ensemble, at 2 p.m. at the LIC club house. Activities after the drummers include Reni Moriarty demonstrating Sumi painting, Jan Buday teaching hands-on Origami paper cranes and information about the Nidoto Nai Yoni ("Let it not happen again.") Bainbridge Island Japanese-American Exclusion Memorial as other examples of Japanese culture. This free family event is part of Pierce County READS. Dona-

tions for the local food bank are appreciated. 253-548-3309.

## APRIL 1

### Lions host film

KP Lions host a free showing of the documentary film "Going Blind" at 3 p.m. in the Whitmore Room at the KP Civic Center. The film follows the lives of persons either blind or facing blindness and provides an insight into how people are able to alter their lives to cope with blindness. George, 853-2721.

## APRIL 2, 9, 16, 23, 30

### Bloodmobile

The bloodmobile will be at the Gig Harbor Albertsons from 11:30 a.m.-6 p.m. The bloodmobile is also at Peninsula High School from 8 a.m.-12:30 p.m.

## APRIL 3, 10, 17, 24

### Play and learn

Baby play and learn (0-24 months) is held at 10:15 a.m. at the Key Center Library. Preschool play and learn (3-6 yrs.) follows at 11 a.m. All children must be accompanied by an adult. 253-548-3309.

## APRIL 4, 11, 18, 25

### Family time

Family story time, for families with preschool children, is held at 11 a.m. at the Key Center Library. All children must be accompanied by an adult. 253-548-3309.

## APRIL 5

### Bloodmobile

The bloodmobile is at Gig Harbor High School from 8 a.m.-2 p.m.

### Fuchsia club

The Lakebay Fuchsia Club meets at 7 p.m. at the Key Center Fire Station this month. Ginnie, 884-9744.

### KP museum re-opens

New displays and rearrangements greet visitors from 1-4 p.m. as the KP Historical Society Museum stages a grand re-opening for the year. Admission is free but monetary donations are appreciated.

Regular hours are Thursdays and Saturdays 1-4 p.m. or by appointment. 884-2533 or 884-5403.

### Adult softball deadline

A Managers' meeting for the Adult Coed Softball Leagues is held today, which is also the deadline for team registrations for players 18 and older. Games will be at Volunteer Field #1 from April 19-June 21- Thursday nights with games starting at 6:30 p.m. Fee is \$575/team which includes registration, USSSA fees, and local sales tax. Contact [Jessica@keypenparks.com](mailto:Jessica@keypenparks.com) or 884-9240.

## APRIL 6, 13, 20, 27

### Skate night

Friday night skate night for elementary and middle school students is from 6-9 p.m. at the KP Civic Center. Entry is \$5 and includes skate rental, games and crafts. April 27 is country western themed. 884-3456.

## APRIL 7

### Egg hunt

The annual Easter Egg Hunt hosted by the Boy Scout Troop #220 and the KP Civic Center begins promptly at noon. Children ages 12 and under are invited to search for Easter eggs filled with candy and prizes and visit with the Easter Bunny. The Troop is also seeking donations for candy. [Kat Wingers, katwingers@hotmail.com](mailto:katwingers@hotmail.com).

### Art show

The Two Waters Art Alliance presents a Juried Art Show from April 7 to May 26 at the Key Center Library. Robin at [robin-peterson@me.com](mailto:robin-peterson@me.com).

### Cosmic skate night

Geared for high school-aged kids, but open to all ages, Cosmic Skating is offered at the KP Civic Center from 9:30 p.m.-12:30 a.m. DJ Kip Miller will fill the gym with upbeat, club mixes paired with an enhanced laser light show. A variety

(See Community, Page 13)

(From Community, Page 12)

of skating contests and games are played throughout the night, including glow-in-the-dark dodge ball. A limited concessions menu with snacks is offered. Entrance is \$5, which includes skate rental. www.kpciviccenter.org.

#### APRIL 13-29

##### Play presented

Paradise Theatre presents "Guys and Dolls" on Fridays and Saturdays at 7 p.m. and on Sundays at 3 p.m. with April 28 at 6 p.m. as a special dinner theatre production. 851-PLAY or paradisetheatre.com.

#### APRIL 14

##### Volunteers needed

Volunteers are needed to prep the site for the KP Civic Center playground. Work will be from 8:30 a.m.-4 p.m. The playground will be built on April 28 and 25-30 volunteers will be needed. RSVP Scott at scottg@keypenparks.com or 884-9240.

##### Community yard sale

Longbranch Improvement Club sponsors a community yard sale from 9 a.m.-4 p.m. Items included are baked goods and plants. Inside tables cost \$20; outside space is \$15. Donated items for LIC are welcome by Friday evening, April 13. To reserve a space, call Denny Pritchard - 884-2030.

#### Second Saturday

Families build a kite under the direction of enthusiast Jerald Graham at 11 a.m. at the KC Library. This free event is sponsored by the Friends of the Key Center Library. 253-548-3309.

#### Lyme group

The Lyme support group meets from 1-3 p.m. at the Key Center Library. Lyme mimics over 300 other diseases including MS, and ALS. Positive group support for chronically-ill patients, caregivers and family members, and information and education on the fastest-growing vector-borne disease in the world is offered. Local doctors and nurses, on the frontlines for rural communities, are especially invited to come and learn from patients. Lyme has four times the number of AIDS patients in N. America and is growing.

#### APRIL 15

##### Third Sunday jam

Bluegrass Gospel Jam sessions held at Longbranch Church (16518 46th Street KPS) from 6 - 8:30 p.m. for all acoustic instruments, ages, and skill levels. Everyone's welcome to play, sing, or simply listen. Bring music stand, finger food to share, music and beverages are provided. 425-492-4177.

##### Democrat caucuses

Key Peninsula Precinct caucuses for democrats are held at 1 p.m. at the Key

Peninsula Middle School, 5510 Key Peninsula Highway N, Lakebay.

#### APRIL 17-19

##### Spring break camp

Key Pen Parks is offering spring break camps for ages 5-9 from 9:30 a.m.-12:30 p.m. Tuesday's camp is Mad Science featuring hands-on experiments; Wednesday's camp is Creative Arts featuring drawing, painting and sculpting and Thursday's camp is Eco Adventure featuring the outdoors and survival skills. Cost is \$15/session and registration must be done by April 10. Call Jessica at 884-9240 or email Jessica@keypenparks.com.

##### Pee wee sports sampler deadline

Children aged 3-5 may experience a sampling of sports and games, such as soccer, t-ball, kickball, tag, etc., adapted for preschool youth. Every class features games focusing on cooperation, teamwork and communication. Classes are held on Tuesdays from April 24-May 29 at 1:30 p.m. at Volunteer Park. Fee is \$45 for 6 sessions. Adult participation is required. Deadline to register is April 17. Contact Jessica@keypenparks.com or 884-9240.

#### APRIL 19

##### Opera preview

Friends of the Key Center Library host an entertaining and enthusiastic "Preview of Madama Butterfly" presented by Norm Hollingshead, Seattle's opera expert, at 7 p.m. at the KC Library. This free preview is preparation for the field trip to the Seattle Opera on May 20 to enjoy "Madama Butterfly." The Friends have reserved a block of tickets for the matinee performance of "Madama Butterfly." Transportation from the Key Center Library to the Seattle Opera House is available. Since the ticket prices vary according to seat selection and transportation is limited, please make your reservations early. Donations to Key Peninsula Community Services Food Bank and Senior Center are welcome. 253-548-3309.

#### APRIL 21

##### Parks appreciation day

Families and individuals are invited to participate at one of the sites listed to help your local park. Volunteers should wear appropriate clothing/shoes for the season, weather and work. Bring gloves,

shears, loppers, pruners, mattocks/polas-kis, rakes, and shovels-with your name on them. Also bring your enthusiasm, smiles and appreciation for our parks. Burn some calories while having fun. A hot dog lunch is provided at noon at the KP LDS Church on 134th. Large groups should contact KP Parks, 884-9240 to enable planning for your group. Parks: Rocky Creek Conservation Area State Route 302 & 150 Ave KPN; Home Park 8th Ave & Key Peninsula Hwy North; Maple Hollow 48th St & Van Beek Rd, Lakebay; 360 Property SR 302 at 144th St, KPN.

#### APRIL 24 through MAY 31

##### Outdoor boot camp

Rain or shine, this class will get active outside at various parks and trails on the peninsula; the instructor is Shannon Reichl. Camp will be held on Tuesdays and/or Thursdays from 6-7 p.m. and cost \$30 for the 6 classes. Contact Jessica@keypenparks.com or 884-9240.

#### APRIL 26

##### Poetry month celebration

A special celebration of poetry in honor of Brenda Bates is held during the Book Discussion Group's meeting at 11 a.m. at the Key Center Library. 253-548-3309.

#### APRIL 28

##### Benefit Concert

Watermark Writers Words and Music presents Brother Sun in a benefit concert at Longbranch Improvement Club for The Mustard Seed Project 7 p.m. no host social hour, 8 p.m. concert. Tickets \$15 at Sunnycrest, Mustard Seed \$20 at door. 884-1205.

##### Cooking class

Key Pen Parks offers a "Once-a-Month Cooking Class" from 9:30 a.m.-12:30 p.m. in the KP Civic Center kitchen. Learn to feed the freezer so you always have nutritious, homemade meals; cook once, eat for a month. Prepare four complete freezer meals, receive starter recipes, shopping hints, freezing tips, and meal assembly instruction. Fee is \$20 for the class and \$15 for the food. Pre-register by April 20 with Jessica@keypenparks.com or 884-9240.

##### Volunteers needed

Building the playground at the KP Civic Center will require 25-30 volunteers, who can work from 8:30 a.m.-4 p.m. Prep work is being done on April 14. RSVP Scott at scottg@keypenparks.com or 884-9240.

## PUBLIC MEETINGS

#### KP Community Fair Association

April 3, 6 p.m. in Roadhouse Restaurant VIP room; www.keyfair.org.

#### KP Lions dinner & program

April 3 & 17, 6:30 p.m. in VFW Room, KP Civic Center. 853-2721.

#### Key Pen Parks

April 9, 7:30 p.m. Volunteer Park Annex.

#### Fire District 16

April 10 & 24, 6 p.m. in meeting room, Key Center Fire Station.

#### Key Peninsula Community Council

April 11, 7 p.m. at Key Center Fire Station.

#### Peninsula School District Board

April 12, 6 p.m. regular meeting at district office.

#### KP Civic Center Board

April 12, meeting at 7 p.m. in Whitmore Room.

#### Key Peninsula Community Council

April 11, 7 p.m. at Key Center Fire Station.

#### LIC

April 18, 6:30 p.m. at Longbranch Improvement Club.

#### KP Citizens Against Crime

April 20, 7 p.m. at Home Fire Station.

# HOUSE to HOME

YOUR GUIDE TO HOMES, PROPERTIES AND THE REAL ESTATE MARKET TRENDS ON THE KEY PENINSULA

## Looking to Rent?



## Look no More!

**We've Got You Covered...**

Key Peninsula	1 to 3	Rents
Gig Harbor	bedrooms	from
Port Orchard		\$725-\$1700

**Just Give Us a Call!**

**LZ** Property Management, LLC  
**884-2076**

Brandy Ellzey—Owner/Designated Broker  
 15510 92nd St. KPN  
 PO Box 688  
 Wauna, WA 98395

For Current Available Rentals, please visit:  
[lzpropertymanagement.managebuilding.com](http://lzpropertymanagement.managebuilding.com)



We can put your home or listing in front of more than

**10,000 potential buyers... you only need one**

Make us one of your **10 touches** this week

Key Pen News...  
 617 9671  
[kpads@comcast.net](mailto:kpads@comcast.net)

## Key Peninsula Real Estate MARKET REPORT

Thru April 2012

### HOMES

#### NON-WATERFRONT REPORT

Homes for Sale	122
Average List Price	\$241,011
(price per sq ft)	\$122
Average Days on Market	240
Homes Sold (ytd)	17
Average Sold Price	\$149,035
(price per sq ft)	\$97
Average Days on Market	98
Properties Pending	23

#### WATERFRONT REPORT

Homes for Sale	36
Average List Price	\$389,857
(price per sq ft)	\$214
Average Days on Market	264
Homes Sold (ytd)	2
Average Sold Price	\$270,000
(price per sq ft)	\$260
Average Days on Market	71
Properties Pending	2

### LAND

#### NON-WATERFRONT REPORT

Land for Sale	188
Average List Price	\$78,955
(price per acre)	\$27,852
Average Days on Market	498
Land Sold (ytd)	7
Average Sold Price	\$48,929
(price per acre)	\$13,209
Average Days on Market	235
Properties Pending	5

#### WATERFRONT REPORT

Land for Sale	31
Average List Price	\$138,925
(price per acre)	\$91,161
Average Days on Market	348
Land Sold (ytd)	1
Average Sold Price	\$25,000
(price per acre)	\$51,436
Average Days on Market	23
Properties Pending	1

This report is provided as a generic reference only... as all properties are unique. Contact a REALTOR® for specific pricing information.

Key Peninsula Market Report provided by:

Tracy Butzko, REALTOR®, ABR®  
 617 9670

[tracybutzko@johnlutz.com](mailto:tracybutzko@johnlutz.com)



# RE/MAX®

Town and Country  
 Pioneer Way, Gig Harbor, WA

The Herron Team  
 Classified by REALTOR®



Move in just when the gardens burst with brilliant color. Immaculate 3 bdrm, 2 ba w/ shop space, large covered entertaining patio on over 1/2 acre. Too much to list!

Key Peninsula North  
 \$254,500 MLS#332717



First quality construction, lovingly maintained. Huge private lot w/ views of Mt. Rainier enjoyed from the large rear deck. Every amenity, this home spares no detail.

Key Peninsula  
 \$425,000 MLS#311546



"The Hometown Experts with a World of Experience™"

[www.herronteamrealestate.com](http://www.herronteamrealestate.com)



Janette Weister  
 o 253-857-1846  
[HerronTeamHomes@gmail.com](mailto:HerronTeamHomes@gmail.com)

Dallas Amidon  
 o 253-857-1827  
 c 253-606-0972

[Remax.Dallas.A@gmail.com](mailto:Remax.Dallas.A@gmail.com)



QR Code  
 Scan with your smart phone for more listings

# WEEKLY EVENTS

## TUESDAYS

### TOPS #1325

Take-Off Pounds Sensibly meets at 9 a.m. at the KP Lutheran Church. Free child care, fun and support are provided. 884-2554.

### Key singers

The Key Singers, the KP community chorus, meets from 7 - 8:30 p.m. in the KP Lutheran Church sanctuary. 884-5615.

## TUESDAYS & THURSDAYS

### Preschool play time

The Children's Home Society KP Family Resource Center offers a preschool/toddler indoor park program from 9:30-11:30 a.m. at the KP Civic Center. Care-givers must stay with child. Drop-ins are welcome; stay for as long as you can. A \$1 donation per child is suggested. 884-5433.

## WEDNESDAYS

### Watermark writers

The Watermark Writers present a free writer's workshop from 5-8 pm in Vaughn. Call 253-778-6559 for information.

## Lakebay writers

The Lakebay Writers meet from 1:30-4 p.m. at the Key Center Library. 884-3931.

## THURSDAYS

### Toastmasters

The Toastmasters meet from 8-9 a.m. at the Key Center Library. Join the fun and improve your speaking ability.

### Senior Society

The Key Peninsula Senior Society, aka Yesterday's Teenagers, meet at 11:30 a.m. for a potluck, fellowship and games at the Civic Center. All are welcome. 884-4981.

## SATURDAYS

### Writers' guild

The Writers' Guild meets from 9-11 a.m. at the Key Center Library. 884-6455.

### Zumba

Zumba for ages 16-plus is offered on Saturdays from 9-10 a.m. at the KP Civic Center. Cost is \$53 for a 5-class punch card, which is good for 2 months after purchase date. 884-9240 or jessica@keypenparks.com.

# OFF THE KEY

## APRIL 2, 9, 16, 23

### Family time

Family story time for families with toddlers/preschool-aged kids is held from 10:30-11:30 a.m. at the Gig Harbor Library. 253-548-3305.

## APRIL 4, 11, 18, 25

### Story times

Toddler (ages 2-3) time is held at 10:30 at the Gig Harbor Library. Preschool (ages 3-6) play and learn is held at 11:30. All children must be accompanied by an adult. 253-548-3305.

## APRIL 5, 12, 19, 26

### Chess club

Children in grades K-8 are welcome to participate in chess club from 6-7 p.m. at the Gig Harbor Library. 253-548-3305.

## APRIL 6, 13, 20, 27

### Baby play

Baby play and learn (0-24 months) is held at the Gig Harbor Library at 10:30 a.m. Children must be accompanied by

an adult. 253-548-3305.

## APRIL 7

### Egg hunt

Pen Met Parks hosts the Spring Egg Hunt from 12-2 p.m. at Sehmel Homestead Park. 858-3400 or PenMetParks.org

### Farmers market opens

The Saturday Farmers Market at Uptown is open Saturdays from 8:30 a.m.-2 p.m. until fall.

## APRIL 12

### Poet reads

Poet Todd Boss will entertain adults as he reads from his poetry at 7 p.m. at the Gig Harbor/Peninsula Library. Mr. Boss has received numerous honors, awards, prizes, a grant and a residency. His first collection, "Yellowrocket," became a finalist for the Minnesota Book Award, and the The Virginia Review named it as one of the top ten best poetry books of 2008. He writes, edits and teaches poetry and is currently working on a new poetry film initiative. This event is sponsored by the Friends of the

(See Off the Key, Page 17)

If you are thinking of building or remodeling in the Key Peninsula Gig Harbor area

Let Joe's Bay Construction, LLC assist you in making your dream a reality

For a Free Consultation call Hank Appleton  
253-820-5678

**Joe's Bay Construction, LLC**  
Lic # JOESBBC961NG  
email: hankappleton@centurytel.net

Find Your Home On **JohnLScott.com** Real Estate

View all listings of all companies [www.johnlscott.com](http://www.johnlscott.com)

2727 Holbrook St. NW Suite #219 Gig Harbor WA 98502 • Park Plaza (253) 858-7500 Open Monday-Saturday 9am-5pm Sundays by Appointment Only

**LOW-BANK WATERFRONT ON ACREAGE**  
100' saltwater in Vaughn on 3.9 acres. 2 bdrm/1.25 ba & studio apt! Vaulted ceiling, wood stove & awesome views.  
\$399,950 MLS #247532  
[www.johnlscott.com/50555](http://www.johnlscott.com/50555)  
Dan Marks 253-278-1659

**COUNTRY CHARMER**  
2 bdrm/1.75 ba, 1350 SQ FT HOME ON .34 ACRES. Community lakes and amenities. Must see!  
\$139,800 MLS #529621  
[www.johnlscott.com/27964](http://www.johnlscott.com/27964)  
Christopher John 253-506-5806

**PARK-LIKE SETTING**  
1,880 sqft, 3 bdrm, 2 ba., 5 acre! Home features private gated entry, spacious layout & 2 story barn/garage.  
\$289,950 MLS #322483  
[www.johnlscott.com/28092](http://www.johnlscott.com/28092)  
Dee Ann 253-677-3500

**TWICE AS NICE!**  
Spacious, warm & inviting daylight rambler w/2 complete & separate living areas. Come see!  
\$209,000 MLS #328392  
[www.johnlscott.com/97539](http://www.johnlscott.com/97539)  
Cheryl O'Brien 253-223-1474

# FIRE DISTRICT 16 CALL LOG

A summary of calls for FD 16 for Feb. 16 to March 15

Total Calls: 123  
EMS: 81  
Fire/service: 25  
Other: 17

## Feb 16

A water tender was dispatched to assist with a structure fire off Ray Nash Drive in Gig Harbor. The water tender responded from the Wauna station and helped to bring water into an area lacking fire hydrants.

## Feb 18

Gusting winds caused a large Alder tree to fall across Key Peninsula Highway on the Home S curve, taking down a phone pole. The large tree, which was blocking the only route off the peninsula for all citizens south of Lackey road, was removed by firefighters and citizens who were stuck in the traffic back up.

## Feb. 23

Key Peninsula Fire crews responded to two fires on this day. The first was a bathhouse building at a camp in Longbranch. Initial attack crews were able to suppress the fire and contain it to the building of origin. The fire destroyed most of the structure and the cause remains undetermined. The second fire was near 118th Ave on SR 302 where an SUV struck a large metal object in the road, which tore open the fuel tank and created a spark that ignited the fuel, causing immediate fire on and around the vehicle. A woman and her two daughters were in the vehicle and were able to escape unharmed, though they were quite shaken by the event. The fire was suppressed by the firefighter but the vehicle was completely destroyed.

## Feb 25

A 3-year-old Lakebay girl was rescued from a swing at a public park in Home. The girl, who was a little oversized for the infant swings, was settled down into the seat and her caregiver was unable to remove her. Firefighters found that she had conformed to the seat and had to cut the swing open using cable cutters to release her. After the girl was "rescued" the swing was removed from service and park officials were notified.

## Feb 27

A 10-year-old Longbranch boy sustained an injury to his spinal column two days prior was now complaining of increased pain. The boy had previously been transported to a local hospital after his cousin jumped aboard the trampoline he was on, ejecting him. He was not transported this time but left in the

care of his parents who were tending to his recovery.

## Feb 28

A 14-year-old boy of the Minter area sustained an injury to the heel of his foot when he jumped from his bed and landed on a pair of scissors, which became impaled into his foot. The scissors were stabilized in place and the boy was transported to St Anthony for further care.

## March 2

Key Peninsula firefighters responded to an elderly woman who fell off a rock onto the beach and injured her hip. Following a beach extrication requiring multiple personnel, the patient was treated and stabilized at the scene, and

(See Fire, Page 17)

## The Mustard Seed Project

Building an Elder-Friendly Key Peninsula

April Third Thursday Community Forum

Facts About Reverse Mortgages

Bob Riler, HUD Certified Reverse Mortgage Counselor  
Pierce County Aging & Disability Resources



Thursday, April 19<sup>th</sup>  
Brones Room  
Key Center Library 10 a.m.  
Transportation available  
Call 884-9814 for details

Everyone welcome at this **FREE** program

The Mustard Seed Project also offers:

Key Peninsula Senior Ride Program  
Door-to-door Transportation  
for Seniors and Disabled Adults  
253-884-2215  
amanda.mustardseed@gmail.com

Key Senior Information Center  
Free, confidential information & referral services  
for Seniors & their Families  
253-884-9814  
tmap@centurytel.net

**NW SPORTS**  
PHYSICAL THERAPY, INC.

Our services include:  
• Orthopedic Rehab • Pre & Post-Surgical Rehab • ACL, PCL, Meniscus, Ligament Rehab • Sports Conditioning • Training • Senior Rehab • Back & Neck Care • Work Injury Rehab • Sports Injury Rehab

Call today... 253.285.7472  
111 W. Ludwick Dr., Ste. 101  
Gig Harbor, WA 98559

The Voice of the Key Peninsula

KEY PENINSULA  
NEWS



Mark Christel  
Belfair  
360.275.3666  
lpl.com/mark.christel  
2400 NE State Rt 3,  
Suite G  
Belfair, WA  
LPL Financial  
Member FINRA/SIPC

We work for you,  
not Wall Street.



Todd Rosenbach  
Key Peninsula  
253.884.4787  
lpl.com/todd.rosenbach  
9013 KFW Hwy,  
Suite 5  
Key Center, WA  
LPL Financial  
Member FINRA/SIPC

Have you ever wondered who your financial advisor really works for, you or the firm? Our goal is your success as an investor. We work strictly for you. And we are backed by the strength and reliability of LPL Financial, the largest independent broker/dealer in the nation. We focus on one bottom line: yours.

Please call to learn more and schedule a free consultation.

**LPL Financial**  
STOCKS • BONDS • MUTUAL FUNDS • IRAs



(From Fire, Page 16)

then transported priority with extra personnel to St. Anthony's hospital.

### March 3

Key Peninsula units responded to reports of a motor vehicle accident on Cornwall Road. Paramedics arrived to find a vehicle in the ditch, on its top. The driver, who was not injured, was evaluated and released at the scene.

### March 5

A Carney Lake area man noticed smoke and went to investigate. He found a neighbor's barn on fire. When firefighters arrived the barn was almost gone. All the animals; sheep, llamas, horses and chickens; were safely in the fields. The fire was suspected to have started from a heat lamp utilized for the three newborn sheep.

### March 7

An SUV entering SR 302 from Goldman Drive NW failed to see another

oncoming SUV causing them to collide as he pulled forward. The accident blocked the west-bound lane for about 30 minutes resulting in a traffic back-up of about three miles as firefighters worked to route traffic through the eastbound lane. Both drivers were uninjured.

### March 8

Multiple units responded to reports of a two-car motor vehicle collision at the 11500 block of SR 302 NW. The driver of one vehicle was stabilized at the scene and transported to a local hospital for further treatment. The driver of the other vehicle was uninjured.

### March 9

A Wauna-area teenager drove her van off of SR 302 and up on an embankment near Goldman Drive NW. She stated that she over-accelerated as she turned onto the highway. She and her passenger were uninjured.

### March 10

A 48-year-old man of Lakebay was injured when he was accidentally struck by a chainsaw being used by his friend. The two were cutting wood when the chainsaw became entangled in blackberries and the man using the saw pulled it free from the berry bushes. As the saw swung around it cut the other man's leg, leaving a significant laceration. The injured man was treated and transported to St. Anthony hospital for further care.

### March 13

The fourth accident this week for the area of the Purdy Sandspit was caused when a Honda Civic pulled out in front of a school bus. The school bus T-boned the Civic sending it over the embankment where it came to rest with the front end on the roof of a waterfront house. The driver, a 22-year-old Gig Harbor man, was uninjured and got out of the vehicle himself. The school bus was empty, except for the driver who also was uninjured.

(From Off the Key, Page 15)

Gig Harbor Library, 253-548-3305.

APRIL 13

### Author speaks

Readers may meet the nationally known, prize-winning author, Jamie Ford, at a free event and book signing at Clover Park Technical College, Sharon McGavick Conference Center, in Lakewood, on Friday, April 13, at 7 p.m.

APRIL 14

### Bloodmobile

The bloodmobile is at Safeway from 9-12 a.m.

APRIL 18

### Hunger Games event

Teens and young adults may participate in Hunger Games events from 2-4 p.m. at the Gig Harbor Library. Defend your district at the cornucopia, compete in the trivia contest and create your own mocking jay pin. Snacks and prizes are available. This event is sponsored by the Friends of the Gig Harbor Library, 253-548-3305.

Are April's showers really sweeter  
Than those for the rest of the year?  
Or is it only because we know  
Daylight and springtime are finally here

We have Easter bunnies and baskets and lots of spring treasures

ANGEL GUILD THRIFT SHOP  
in the Key Center Corral

253-884-9393 - angelguild9013@hotmail.com

Open Wednesday through Saturday 10:00 AM to 4:00 PM

The Angel Guild Thrift Shop is an independent charity and is not affiliated with any other organization.



"We will beat any competitor's prescription price."

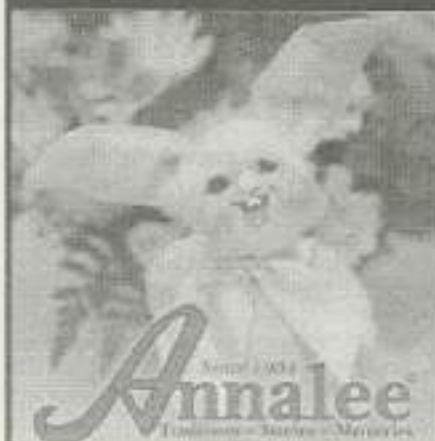
Purdy

**COST LESS**

Prescriptions

253-857-7797

Flu Shots Available M-Sat in Pharmacy



**Annalee  
Dolls**

**25% off**

**11th Annual Key Peninsula Livable Community Fair**

**Saturday, May 12, 2012**

**Key Peninsula Civic Center - 10am - 3pm**

Sponsorship opportunities are available to promote local businesses through posters, postcards, ads, website links and more.

Exhibit space available for non-profit organizations and other community resources on the Key Peninsula.

**\*\*New this year: Emergency Preparedness info, workshops & vendors.\*\***

For details, visit [www.kpciviccenter.org](http://www.kpciviccenter.org) or call 253-884-3456.

# SHERIFF'S BLOTTER

A summary of calls for Pierce County Sheriff's Department for Feb. 22 to March 19

## Feb. 20-March 14

2100 block of 205th Ave.

Vandalism. Suspects pried open the door of a trailer, but nothing was taken.

## Feb. 22, midnight

13500 block of 91st St. Ave. Ct, NW

Theft U.S. Government Property. The victim received notice that her Social Security number was given to open an account for BillMcLarter, a Paypal service. Five charges were on the account. The victim reports she did not purchase or receive any merchandise or services from the company.

## Feb. 23, 3:05 p.m.

11900 block of 134th Ave.

Arrest. 31-year-old male was arrested for violation of a court order of protection/restraining order.

## Feb. 27, 9:15

14100 block of 141st St.

Possession of stolen property. 21-year-old female suspect has multiple active warrants. She had moved in with her boyfriend's grandmother to get her life back on track. After being caught smoking "Oxy," she was told to move out. The grandmother found stolen property in the bedroom where the young woman had been staying. The case is still active.

## March 1, 11:15 a.m.

12400 block of 134th Ave. KPN

Arrest. A 49-year-old female was arrested on charges of possession of heroin, possession of drug paraphernalia, and a criminal arrest warrant.

## March 1, 2:15 p.m.

5300 block of 187th Ave KPN

Residential burglary. While on vacation the victims received a phone call

from the neighbor who was looking after the cat. Front main and secondary doors were standing open with the upper glass broken. A brick was lying in the kitchen floor. A Motherhood box, jar with foreign coins, jewelry and cuff links were taken, as well as a leather box, a Tag Hauer lady's watch. No suspect info.

## March 3, 12:30 a.m.

125000 block of 134th Ave. KPN

Motor vehicle theft. A white 1990 Nissan pickup was stolen from a church parking lot.

## March 3, 7 a.m.

13500 block of 96th Ave. NW

Residential burglary. Someone entered an unlocked cabin and took cash and a cell phone. The previous night some firewood was stolen.

## March 5, 7:30 a.m.

10800 block of 167th Ave.

Residential burglary. Between 7:30 a.m. and 2:30 p.m. someone entered through an unlocked and open garage door. Suspects went through the entire home, emptying contents onto the floor. Valuable items were moved around but left behind. Suspects took the ATV out of the garage and drove it through the yard but left it at the top of the driveway with the keys in the ignition. Only two small jewelry boxes with costume jewelry inside were taken. Prints were found on the television screen and gun cabinet. Forensics was called for processing.

## March 8, 8 a.m.

17000 block of 150th St.

Residential burglary. The window and

(See Sheriff, Page 19)



**Stay Active  
& Independent  
for Life**

For more information call:

Key Peninsula Community Services at 884-4440  
Classes are held on Monday, Wednesday & Fridays  
10am to 11am

*Our food bank is running very low on food...  
if you can donate canned or boxed food items  
it would be appreciated very much!!*

**A Big Thank You to Volunteer**

**RANDY GILL...thanks for being there  
for us and the community!**

## LAKEBAY ROOFING

Pierce, Kitsap, and  
Mason Counties

- RESIDENTIAL •
- RE-ROOFING •

SHAKE • TORCH DOWN • METAL  
COMPOSITION • CEDAR • SHINGLES  
FREE ESTIMATES

884-2186 • Tom Rolfzen - Owner  
WN. ST. CONSTRU.REG.LAKEBR1022R1

## MYR MAR

Myr-Mar Accounting Service, Inc.

**ALL Taxes-Bookkeeping**

R. Marvin Keizur, Accountant  
13215 139th Ave., KPN 253.884.3566  
mkeizur@aol.com



**SAVE  
THE DATE**

Key Peninsula Civic Center presents  
**Flavors of Fall Speakeasy**  
Saturday, October 13

Note change of date

(From Sheriff, Page 18)

door of a motor home were shattered. A Toshiba 19-inch panel TV and two Adidas duffle bags full of clothes were taken.

**March 8, 5 p.m.**

13000 block of 138th Ave. KPN  
Theft. A battery was stolen from a utility trailer in the driveway of the home. A neighbor had taken it, and when confronted and asked to return it the neighbor did so without incident.

**March 10, midnight**

SR 302 and KP Hwy  
Aggravated assault. A white male passing by a residence in Purdy confronted people in the front yard of the home and took out a knife. The victim's left hand was cut and he received seven stitches.

**Between Oct. 1 and March 10**

18600 block of 20th St. KPN  
Residential burglary. Someone kicked in the front door and removed the fuse panel, furnace, water heater and two exterior doors. Damage was done to four windows, and the garage door was kicked in, and suspects took a fuse panel and garage door from the detached garage.

**March 10, midnight**

1900 block of N. Herron Road  
Vehicle prowling. An iPod adapter, Garmin GPS, and radar detector were stolen from a Mini Cooper.

**March 10, 3 p.m.**

13000 block of 138th Ave. KPN  
Residential burglary, attempted theft. York heat pump was vandalized and most of the interior parts were stolen. Someone also pried open a rear window screen in an attempt to gain entry. Damages estimated at more than \$5,000.

**March 10-18**

7500 block of KP Hwy N.  
Theft. A white truck canopy was taken, about 1/2 cord of firewood also taken. No suspect info.

**March 11, 6:34 p.m.**

11900 block of 134th Ave.  
Residential burglary. A side window was broken and the home was ransacked.

**March 16, 9:15 p.m.**

17600 block of 132nd St.  
Vandalism, hit and run. Tan 1980s-90s 4-door Honda driven by a white man in his 50s struck a tree in the yard, struck the house, then fled toward Key Center. A witness saw the vehicle drive to the bottom of the driveway slowly and thought it must be a friend of the victim. But the engine revved up and the vehicle then drove at the house at a high rate of speed. Photos of the damage were processed. No suspect info.

**March 19, 1:30 a.m.**

13500 block of 96th Ave. NW  
Theft from yards. A cast iron skillet, garden signs, two antique suitcases, and three old school lunchboxes were taken.

**Abandoned homes seminar in Gig Harbor**

Peninsula Communities of Faith will host "Abandoned Home Seminar" on April 11 from 9 to 11 a.m. at Sehmel Homestead Park Pavillion, 10125 78th Ave. NW. The seminar will define vacant versus abandoned homes, and the health and safety concerns posed to communities.

The purpose of the seminar is to identify abandoned homes, develop a

database controlled by the county, contacts for Realtors, a plan of action to eliminate hazards, how the government is involved, what property owners are responsible for, and any legal recourses that are available.

John Oldham will facilitate. For more information contact him at 858-1700 or 225-1866, or email orcaone@centurylink.net.

**HOME**  
**EXCAVATING & DOZING**



**NATURE TRAILS,  
BEACH ACCESS,  
SITE CLEARING & PREP.,  
LOGGING,  
ROCK WALLS & STEPS,  
DRAINAGE SYSTEMS,  
ROAD GRADING,  
DEMOLITION,  
STUMP REMOVAL,  
GRAVEL &  
TOPSOIL DELIVERIES,  
& MUCH MORE.**

***DIFFICULT JOBS ARE OUR SPECIALTY!***

**(253)884-5798**

**Ellis Accounting & Taxes**  
Enrolled Agents  
Members of WSTC and NAEA



**Personal & Business Taxes, Big or small**

*We do them all..*

- Bookkeeping
- Payroll
- Notary
- Financial Statements
- Businesses

**253-858-4777**  
9501 SR 302 NW

**Glen Cove Repair**

Open to service your auto & truck with integrity & honesty. Complete Auto & Truck Repair & Maintenance



**FREE Diagnosis of Warning Lights**

All Makes & Models Foreign & Domestic  
30k, 60k & 90k Services  
Timing Belts  
CV Axles  
Complete Brake Service  
Starters & Alternators  
Front End Repair  
Engine Replacement  
Clutch & Transmission  
Complete Diagnostic Repair  
Radiator & Heater Cores  
Shocks & Struts  
Performance Exhaust



**Free Battery & Alternator Test**

Located just down the Hill from Key Center on Glen Cove

Owners: Eric, Manuela & Mathew Moreland

253  
**884-1838**

# To forgive is to live

It had been, by all accounts, a horrid day. Arrested on false pretenses, abandoned by friends, convicted in a kangaroo court, brutally tortured, then nailed to a ragged hunk of wood and hung up to be scoffed at by all who passed by. Yes – the definition of a very bad day.

Yet here in the midst of the Good Friday drama Jesus surprises us still. Betrayed, beaten, and bleeding, he cries out not of anger or retribution; instead, his plea is "Forgive them, because they don't know what they're doing."

Forgiveness was an important theme for Jesus. He commanded his followers to be a forgiving people, and he regularly practiced forgiveness himself. It's no wonder, then, that here, in the crux of his redemptive work, when all the forces of jealousy, hatred, discord, and violence were thrown up against him, he still chose to forgive.

It doesn't seem we've learned his lesson very well. Ours is a culture of retribution and revenge, of simmering grudges and slow-burning bitterness. A

perceived act of disrespect leads to shootouts in our cities; forgotten grudges lead to family feuds that last for generations. Somehow we've come to believe the lie that our pain will only be resolved when we can inflict equal or greater pain upon our enemies.

Forgiveness is often neglected, for a lot of reasons. It seems to come from weakness. It's unfair. It lets the offender off the hook too easily. It's impractical. Real Men fight for their rights; they don't back down from a challenge. Hollywood has taught us well.

And yet, there's this. Study after study prove that people who practice forgiveness live longer, happier, more contented lives. They are healthier, both physically and emotionally. Their families are healthier. They are more satisfied with their work, more able to enjoy their leisure.

In my work as a pastor, I've seen it

**Dan Whitmarsh**  
Writing by Faith



over and over again. People have been wronged, and they hold on to their wound like a precious jewel. To forgive seems impossible; they're not ready to give up their emotional claim against their offender. And it eats them up alive. Lack of forgiveness can cause severe emotional distress, but it's been proven to cause physical illness as well – heart disease, high blood pressure, headaches, even death.

Easter is upon us, and with it the celebrations of new life, new hope, new possibilities. With Easter comes the promise of an ultimate forgiveness for all wrongs ever committed. Yet even as Christians celebrate the message of

God's forgiveness, we are reminded to "go and do likewise." As we have been forgiven, so are we to practice forgiveness against those who do us wrong.

The good news is, we've got nothing to lose and everything to gain. As we learn to forgive (and yes, it's a long process), we will reap the benefits of new joy, new health, and new freedom to live our lives to their fullest, no longer weighed down by bitter grudges or festering anger.

If you have no idea where to start, there are many good books on the subject, and I'd be glad to recommend a few if you get in touch with me. Or talk to your own pastor or religious leader, a trusted friend or counselor, or even search around online. The resources are there; you just need to go find them.

On behalf of the KP Ministerial Association, I wish you a forgiveness-filled Easter season.

*Dan Whitmarsh is Pastor at Lakebay Community Church.*

## KP SCHOOLBUS CONNECTIONS "Tuesday Trips to Town"

(not available April 17th)



### FREE COMMUNITY TRANSPORTATION On Off-duty SCHOOLBUSES\*

Limited am/pm routes  
connect the KP with local stops  
and the Purdy Park & Ride

For information, routes  
& User's Guide  
please contact

**The Mustard Seed Project**

Free door-to-bus-stop van connection for riders age 60+.

253-884-9814 or email  
[tmsp@centurytel.net](mailto:tmsp@centurytel.net)

\*Unfortunately, standard schoolbuses are NOT wheelchair accessible.



Hydroponics • Lighting • Organics  
**Why Cross the Bridge?**

**\$5 OFF**  
your purchase of \$20 or more

Indoor Garden Not valid with other offers.  
Expires 4/30/2012

**FOOD DRIVE!**  
Bring in 2  
non-perishable  
food items  
and receive  
**15% OFF**  
your purchase!

KP Indoor Garden Store  
8912 KP Hwy N, Lakebay, WA 98349  
(253) 88 4SURE (7873)  
[www.KPIndoorGardenStore.com](http://www.KPIndoorGardenStore.com)

## WANTED

Vendors for  
Swap Meet & Farmer's Market  
located at Drive Thru Feed.  
Open Sat. & Sun. May 5th to Sept. 3rd.  
Space is free with a \$40 advertising fee.  
Open Sat. 10am-3pm &  
Sun. 11am-3pm.

Located at the corner of Rt. 302 &  
Wright Bliss in the Drive Thru Feed.

Call Stephanie at 884-9469

## SOCIAL SECURITY DISABILITY

ADVOCATE/REPRESENTATIVE

*The Difference is Personal Service*  
**93% approval rate 2000-2011**  
**MISSION POSSIBLE**  
Employment Services, Inc.

253-884-9205  
OR  
360-798-2920  
[www.mps.net](http://www.mps.net)





### Batter Up

Key Peninsula Little League held an umpire clinic at the field. Bret Cundiff, Tyler Richardson and Adam Baca help Jacob Johnson as he leads the exercise.

Photo by Ed Johnson, KP News

The Voice of the Key Peninsula

## KEY PENINSULA NEWS

Key Peninsula News  
**May Advertising Deadlines**

Ad Copy on or before  
**April 12**

Ad space reservation on or before  
**April 12**

Camera Ready Artwork  
**April 17**

## WayPoint Church

pointing the way to Jesus...

12719 134th Ave KPN  
 853-7878

### Sunday Services

9:30am & 11:00am  
 Children's Programs both services,  
 11:30am High School & Middle  
 School Classes

### Student Ministries Meet Monday Nights @ 6:30pm

go to [five17.com](http://five17.com) for more info  
 on youth events.

TUESDAY NIGHTS, 6:30pm  
 Women's Study - James, Mercy  
 Triumphs by Beth Moore  
 Men's Study - Holy Ambition by  
 Chip Ingram

Childcare Provided - Call the church  
 office to register.

Join us **RESURRECTION SUNDAY!**  
**APRIL 8TH 9:30 & 11:00AM**  
[www.waypoint-church.org](http://www.waypoint-church.org)

Boy Scout Troop #220 and the  
 Key Peninsula Civic Center  
 invite you to an...

## EASTER EGG HUNT

Saturday, April 7, 2012 • Noon

1000's of stuffed Easter eggs and a  
 visit from the Easter Bunny!



# Chinese fishing village holds onto ancient ways

By Michael Silk  
Special to the KP News

Tai O fishing village is unlike any place that I have visited in Hong Kong thus far. It is ancient. There are indications that people have been living in the area since the Stone Age. Now, the village is a reminder of a past that has been forgotten for most Hong Kong natives. There is really only one main road in the town, which leads to the bus station. Most of the streets of the village are simple alleyways that are hardly wide enough for two or three people to stand side by side. For the most part the village is composed of buildings built on stilts over the water. People hang crab cages off the back of their homes into the water for food. There are many traditional Chinese medicine shops, more than one would expect such a small village could need.

The village is mostly populated by the aging. When the children become young adults they usually leave behind their homes due to a lack of opportunities. As you walk through the village it is very apparent that the overall population is much older than the rest of Hong Kong. The children running around in school uniforms at all hours of the day, which are common everywhere else in Hong Kong, are nowhere to be seen in Tai O.

Every day, as I walk through my village of Lam Tei I am greeted to the sounds of Mahjong. It is a game that's somewhat

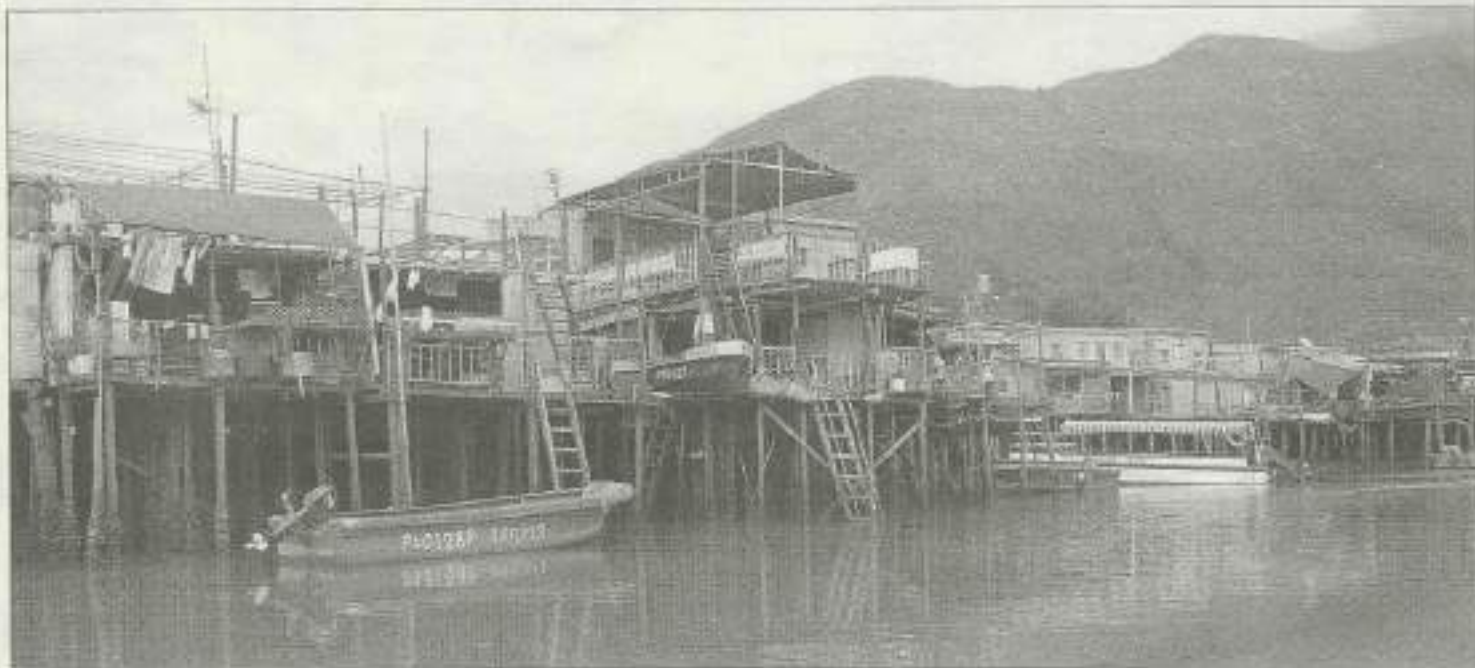


Photo courtesy of Michael Silk

Homes in the Tai O fishing village are built on stilts over the water. Fresh crab is available from the crab cages the residents hang from the back of their homes.

similar to gin rummy but played with 136 plastic tiles instead of a deck of 52 cards.

Myths claim the game originated around 500 BC and was invented by Confucius. Mahjong is a traditional part of the Hong Kong culture and a fundamental component of village life. It seems that the entire community is centered around the Mahjong table. Each day I spend watching, I hope to be invited to play. Mahjong is such a fundamental component of Hong Kong life that it feels as though my experience

here won't be complete until I get to sit at that table.

Often times, there are over a dozen villagers gathered together watching the four players. They are all talking, laughing, smoking, and every Wednesday they listen to the horse races on the radio. The shop is filled with antlers, herbs, and any number of other holistic ingredients in jars.

Every time you visit you feel as though you could have shown up three hundred years earlier and they would be doing the same

thing, with the exception of smoking cigarettes and listening to the radio of course.

It's comforting to know that in a city that moves so rapidly there are still places where things move slowly and people are comfortable spending time with each other. Every day, as I walk past the shop everyone greets me with a friendly wave. They always pull out a seat for me and greet me cheerfully, "Our American friend!" It is a joy to have been accepted with open arms into this community.

Place your business card in this advertising directory  
Call 253-884-4699 or  
e-mail ads@keypennews.com

*'Key Peninsula Specialist'*

**SOLD**

**Better Properties**

North Proctor  
www.betterproperties.com

**AJ Million**  
Real Estate Broker  
253.318.8585

Alt: 253.884.9537  
Fax: 253.884.3032  
aj@betterproperties.com

Better Properties  
North Proctor  
2606 W. Proctor  
Tacoma, WA 98407

Each office is independently owned & operated

*The Voice of the Key Peninsula*

**KEY PENINSULA NEWS**

**Aspen**  
Land Surveying LLC

at The Landing in Key Center  
(half a block east of the stop light)  
253-303-0270 www.aspenland.com

Opening on Tuesday, April 3 with lavender plants & products!  
Free Class: "Planting/Caring for Lavender" on Saturday, April 28  
Second Annual Lavender Festival here on July 13 - 14, 2012!

*Blue Willow*  
LAVENDER FARM

On the Key Peninsula  
10615 Wright Bliss Rd Kp N, Gig Harbor, WA 98329  
253-225-9030  
Open Tuesday - Saturday, 10 AM - 4 PM  
www.bluewillowlavenderfarm.com

**BROOKSIDE VETERINARY HOSPITAL**  
*Tender Loving Care For All Your Family Pets!*

Lisa M. Woods, DVM

13701 118th Ave. NW  
Gig Harbor, WA 98329

253.857.7302  
253.857.7654 Fax

**DENISE HAYS**  
[253] 732-8861

House & Pet Sitting,  
Security Checks, Admin,  
Errands, Organizing,  
Light Bookkeeping...  
& so MUCH more!

- 30 Year  
• 87 Resident
- NBA—Business
- Captain, US Marine
- 15+ yrs Operations
- Dedicated to Quality  
& Customer Service
- Licensed & Insured



**Gentilly Home Services**

Home • Office • Out Buildings • Repairs  
Replacement • Alterations • Decks • Fixture  
Replacement • Windows • Doors • Minor  
Plumbing • Water Damage  
• Lights • Cabinets...and more

Phone: (253) 884-2491  
Cell: (253) 376-6227

Mike Gentilly  
PO Box 496  
Vaughn, WA 98294  
Homeowner  
PGENTHSS@GMAIL.COM

*Helen's Therapeutic Touch*  
Massage Therapy

Helen Waller  
Licensed Massage Therapist

**\$40/hour Massage**  
-for new clients-

Call for appointment      Gift Certificates Available  
253 853 7585

**Historic**  
**Vaughn Bay Church**  
*A Community Worship*  
Worship Service 10:30 am  
**884-9303**  
VFW Room  
Key Peninsula Civic Center

**KEY PENINSULA CARPENTER**  
All Phases of Carpentry & Painting

Owner/Operator  
Free Estimates/Same Day Call Back  
License - Bonded - Insured

CALL STEVE  
**253-884-6693**  
Steve.stem@gmail.com

Steve's Home Repair & Remodel LLC • M STEVEHROG-412

Key to Learning  
Childcare/Preschool

"Nurturing the skills to succeed in school, and..."

Old Harbor/Key Peninsula Area Winter Elementary School  
Ages 3-11/ Flexible Hours      All Meals Provided  
Amenities/Playground      Great Friends  
30 Years of Licensed Home Childcare Provider  
Helen Macomber 253-878-3480 or 253-458-3713

**Equine, Livestock & Residential Fencing—Since 1989**  
Warick & Janice Bryant

**KIWI FENCING COMPANY, INC.**  
Custom Farm & Fence Solutions

13704 11655, KPN  
Old Harbor, WA 98294  
www.kiwifencing.com  
#WAIFC05904

800-298-3374  
253-851-5494  
Fax 253-851-5550  
info@kiwifencing.com

**MICHAEL'S**  
**ROOF SERVICE**  
Get the best for less

LIC # MICHAELSRP0      michaelroofservice.com

**253 241-0614**

*The Voice of the Key Peninsula*

**KEY PENINSULA NEWS**

**Nimrick's Bulldozing** "Fire Up The Diesel!"  
Small & Large Jobs  
Land Clearing  
Site Prep  
Rock Walls  
Roads  
Logging  
Gravel

Call for Free Estimate

15406 92nd St. KPN      Jeremy 253 365 8887  
Old Harbor, WA 98329      Randy 253 606 3088

*Serving the community for over 32 years*

**Kelly Oathout**  
General Contractor  
Lic#KELLYOC0991P4

**CONSTRUCTION**  
kellyoathoutconstruction.biz  
253-219-3208      koathout@centurytel.net

**ONE EARTH Enterprises, Inc**

**Remodel • Repair • Design**  
253-857-7259  
Ira Spector • Lic# ONEEAE927CJ  
Let's Cross Some Things Off That List!

The Voss Family & Pete's Towing wish to thank the Key Peninsula for their outstanding support of **Pete's Towing**.

This is what our community is about—**GREAT PEOPLE LIKE YOU!**

Thank You!  
on behalf of  
**THE BIG RED TOW TRUCK**



**PENINSULA IRON**  
11021 BR 305 NW, OLD HARBOR, WA 98299

**CUSTOM STEEL & ALUMINUM WELDING**  
GATES ~ RAILINGS ~ TRUCK RACKS

KEITH HILLSTROM      OFFICE (253) 857-2456  
SCOTT ROGERS      SHOP (253) 857-8944  
FAX (253) 857-3859

**Food Market**  
at Key Center | Lake Kathryn

**GRAND Opening Coming May 2nd!**

Key Center      Lake Kathryn  
**884-3325**      **857-5382**  
Hours: 9am-10pm      Hours: 9am-8pm

www.wysoerfoodmarket.com

**Commercial Peninsular Residential PROPANE SERVICE**  
Serving the South Sound

New Customers      -Guaranteed Lowest Prices-

Get 10 Free Gals w/purchase of 75 gallons or more

253 **857-1011**  
All major credit cards accepted  
www.peninsulapropaneservice.com

**SAW-MILL**

Portable & willing to travel!  
Let me turn your logs into lumber.  
Very Economical & Green  
License - Bonded - Insured

CALL STEVE 206-300-9871      stevestem@gmail.com  
Lic # STEVEHROG-412 (Steve's home repair and remodel)

**Pierce County**  
Office of the County Council

**STANLEY L. K. FLEMMING**  
Councilmember, District No. 7

809 Tacoma Avenue South, Room 1046  
Tacoma, Washington 98402-2176  
stan.flemming@co.pierce.wa.us

(253) 798-6854  
(800) 952-2452  
FAX (253) 728-7309

**TeddyBull's Cat Boarding**

Suzy Meyer  
Lic. Vet. Tech.

Call for Details  
**253-324-1412**

www.myspace.com/catboarding  
Licensed-Bonded-Insured



Place your business card in this advertising directory  
Call 253-884-4699 or e-mail ads@keypennews.com

# Out & About

To see more Out & About photos, visit our web site at [www.keypennews.com](http://www.keypennews.com) and follow the Photo Gallery link. See more of your neighbors out and about, Key Peninsula scenes and happenings. The online gallery features web site exclusive photos!



*Photo by Eleanor Walters, KP News*

The Key Peninsula Civic Center was filled with young children March 3 during a trike-a-thon.



*Photo by Ed Johnson, KP News*

A sure sign of spring -- a trillium graces the grounds of Trillium Creek Winery.

## Where in the World...



Chris and Linda Ilhoads of Longbranch took a trip to England. They took their copy of the KP News with them as they took a ride on the largest Ferris wheel in Europe, The London Eye.

sponsored by

**BAYSIDE  
ANIMAL  
LODGE,  
LTD.**



Where Animal Care and Friendly Customer Service are our specialties



*Photo courtesy of Ric Hallock*

Longbranch resident Inga Slade subjects her finger to a pinprick so Felipe Harrison can take a blood sample for cholesterol and glucose testing at the annual Gig Harbor Fire and Medic One Health and Safety Expo, Saturday, March 10 at the GHFMO headquarters on Bujacich Road.